



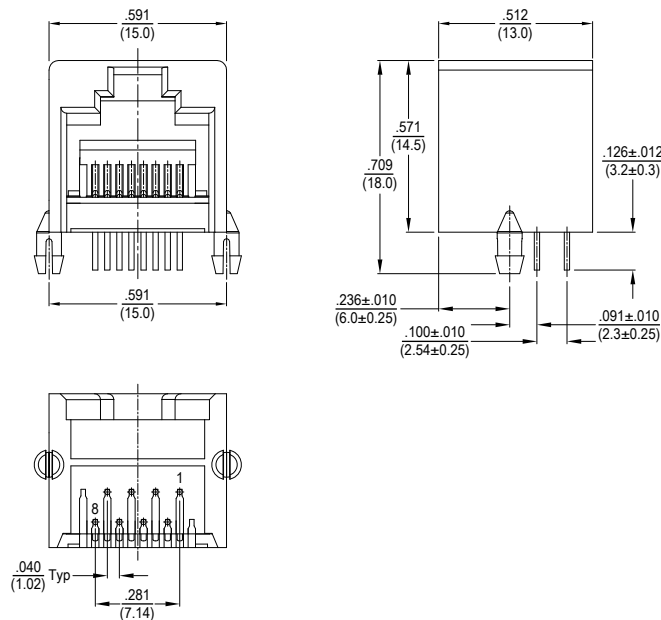
- Standard Operating Temp: 0°C to +70°C

Electrical Specifications @ 25°C				
Voltage Rating (VAC)	Current Rating (Amp)	Contact Resistance (mΩ)	Insulation Resistance (MΩ)	Dielectric Strength
150	1.5 Max	30 Max	500 Min	2250VDC

All specifications subject to change without notice.

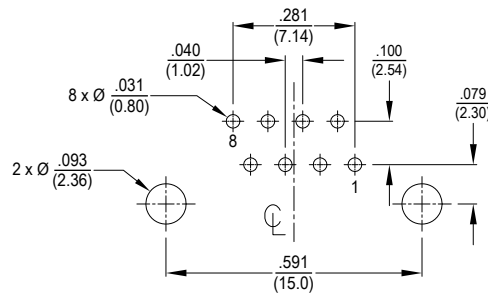
## MECHANICAL

Dimensions:  $\frac{\text{inch}}{\text{(mm)}}$



## PCB LAYOUT

Dimensions:  $\frac{\text{inch}}{\text{(mm)}}$



Tolerance ±.002 (0.05mm)

## NOTES

- Connector Materials:**  
**Housing & Insert:** Thermoplastic, UL94 V-0  
**Terminal:** Phosphor Bronze T=.45mm  
**Terminal Finish:** Gold on Contact area, Tin on solder tails, Nickel underplate overall.