

DESIGNED & DIMENSIONED  
IN MILLIMETERS [INCHES]

ACRK-22-XX-X-X-XX-M-X

DO NOT  
SCALE FROM  
THIS PRINT

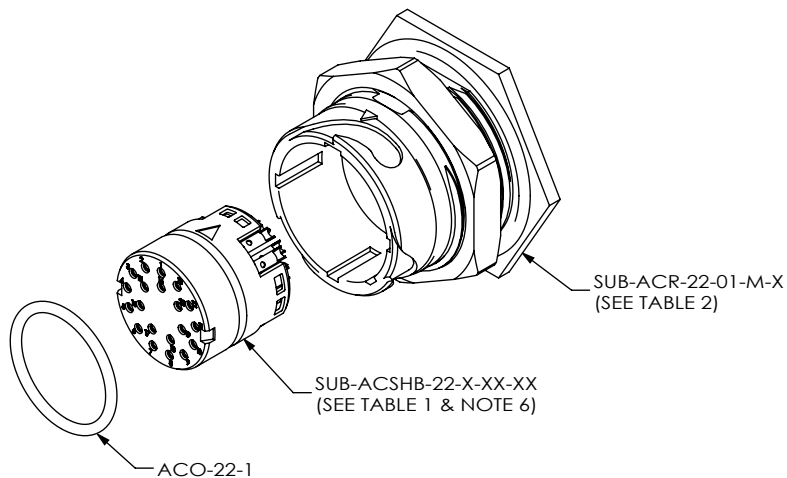


FIG 1  
ACRK-22-02-X-S-X-M-1 SHOWN

RECEPTACLE KIT

SIZE

LEAD STYLE

- 01: 30 POS (1.0 TERM/SKT), 20 - 24 AWG
- 02: 20 POS (1.0 TERM/SKT), 20 - 24 AWG
- 03: 8 POS PWR (1.5 TERM/SKT), 14 - 18 AWG
- \* -04: 6 POS (COAX PLUG/JACK), CCA-316
- 05: 20 POS COMBO  
(4 X 1.5 TERM/SKT, 14 - 18 AWG)  
(16 X 1.0 TERM/SKT, 20 - 24 AWG)
- \* -06: 16 POS COMBO  
(4 X COAX PLUG/JACK, CCA-316)  
(12 X 1.0 TERM/SKT, 20 -24 AWG)

KEY FEATURE  
(SEE NOTE 2, SHT. 4)  
-1: ORANGE  
-2: GREEN  
-3: BLUE  
-4: YELLOW

STYLE  
-M: METAL

TERMINATION

(SEE SHT. 4)  
-C: SOLDER CUP  
-B1: .062 BOARD MOUNT  
(NOT AVAILABLE WITH  
-04, OR -06 LEADSTYLES.)

GENDER

-T: TERMINAL  
-S: SOCKET

PLATING

-G: 10µ" GOLD ON CONTACT  
-H: 30µ" GOLD ON CONTACT

\* = NOT RELEASED FOR PRODUCTION

SUB-ACTHB-22-X-XX-XX  
(SEE TABLE 1 & NOTE 6)

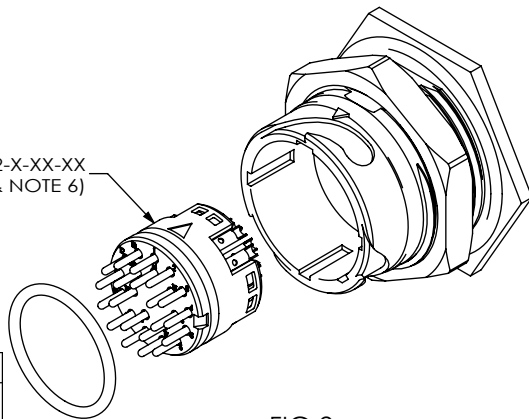


FIG 2  
ACRK-22-02-X-T-X-M-1 SHOWN  
(SAME AS FIG 1, EXCEPT AS SHOWN)

TABLE 2	
KEY FEATURE	SUB-ACR-22-XX-M-X
-1	SUB-ACR-22-01-M-1
-2	SUB-ACR-22-01-M-2
-3	SUB-ACR-22-01-M-3
-4	SUB-ACR-22-01-M-4

TABLE 1							
LEAD STYLES	GENDER	TERMINATION					
		-C: SOLDER CUP			-B1: BOARD MOUNT		
		SUB-ASSEMBLY/HOLDER BODY PART #		COAX PLUG/JACK PART #		SUB-ASSEMBLY PART #	
		PLATING					
		-G	-H	AC-X-C-H-ST-CA1	QTY	-G	-H
-01	-T	SUB-ACTHB-22-G-01	SUB-ACTHB-22-H-01	NA		SUB-ACTHB-22-G-01-B1	SUB-ACTHB-22-H-01-B1
-02	-T	SUB-ACTHB-22-G-02	SUB-ACTHB-22-H-02	NA		SUB-ACTHB-22-G-02-B1	SUB-ACTHB-22-H-02-B1
-03	-T	SUB-ACTHB-22-G-03	SUB-ACTHB-22-H-03	NA		SUB-ACTHB-22-G-03-B1	SUB-ACTHB-22-H-03-B1
* -04	-T	ACTBH-22-6	ACTHB-22-6	AC-P-C-H-ST-CA1	6	NA	NA
* -05	-T	SUB-ACTHB-22-G-05	SUB-ACTHB-22-H-05	NA		SUB-ACTHB-22-G-05-B1	SUB-ACTHB-22-H-05-B1
* -06	-T	SUB-ACTHB-22-G-06	SUB-ACTHB-22-H-06	AC-P-C-H-ST-CA1	4	NA	NA
-01	-S	SUB-ACSHB-22-G-01	SUB-ACSHB-22-H-01	NA		SUB-ACSHB-22-G-01-B1	SUB-ACSHB-22-H-01-B1
-02	-S	SUB-ACSHB-22-G-02	SUB-ACSHB-22-H-02	NA		SUB-ACSHB-22-G-02-B1	SUB-ACSHB-22-H-02-B1
-03	-S	SUB-ACSHB-22-G-03	SUB-ACSHB-22-H-03	NA		SUB-ACSHB-22-G-03-B1	SUB-ACSHB-22-H-03-B1
* -04	-S	ACSHB-22-6	ACSHB-22-6	AC-J-C-H-ST-CA1	6	NA	NA
* -05	-S	SUB-ACSHB-22-G-05	SUB-ACSHB-22-H-05	NA		SUB-ACSHB-22-G-05-B1	SUB-ACSHB-22-H-05-B1
* -06	-S	SUB-ACSHB-22-G-06	SUB-ACSHB-22-H-06	AC-J-C-H-ST-CA1	4	NA	NA

NOTES:

1. KIT COMPONENTS TO BE PACKAGED IN BAGS PER PACKAGING STANDARD CO-RF-WI-3001-M.
2. KEY FEATURE DETERMINES COLOR OF COLOR KEY RING AND DUSTCAP LANYARD IF APPLICABLE.
3. REFER TO DCA-ACR-22-M-X PRINT FOR DUST CAP.
4. PANEL THICKNESS RANGE: 0.80[.031] - 5.20[.205].
5. TORQUE SPECIFICATION FOR PANEL NUT: 1.7Nm[15.00 IN-LB] - 2.3Nm[20IN-LB].
6. RECOMMENDED INSERTION TOOL: CAT-AC-22-M.
7. NOTE DELETED.

UNLESS OTHERWISE SPECIFIED,  
DIMENSIONS ARE IN MILLIMETERS.

TOLERANCES ARE:

DECIMALS ANGLES  
X.X: ±0.3 [01] 2°  
X.XX: ±0.13 [005]  
X.XXX: ±0.051 [0020]

PROPRIETARY NOTE

THIS DOCUMENT CONTAINS CONFIDENTIAL AND PROPRIETARY INFORMATION AND ALL DESIGN, MANUFACTURING, REPRODUCTION, USE, PATENT RIGHTS AND SALES RIGHTS ARE EXPRESSLY RESERVED BY SAMTEC, INC. THIS DOCUMENT SHALL NOT BE DISCLOSED, IN WHOLE OR PART, TO ANY UNAUTHORIZED PERSON OR ENTITY NOR REPRODUCED, TRANSFERRED OR INCORPORATED IN ANY OTHER PROJECT IN ANY MANNER WITHOUT THE EXPRESS WRITTEN CONSENT OF SAMTEC, INC.



520 PARK EAST BLVD, NEW ALBANY, IN 47150  
PHONE: 812-944-6733 FAX: 812-948-5047  
e-Mail: info@SAMTEC.com code 55322

MATERIAL: DO NOT SCALE DRAWING SHEET SCALE: 1:1

SHELL: ZAMAK 3  
INSULATOR: PBT, COLOR: BLACK  
O-RING: NITRILE  
NUT: BRASS  
COLOR RING: SILICONE  
TERMINALS: BRASS  
CONTACTS: BRASS/BeCu

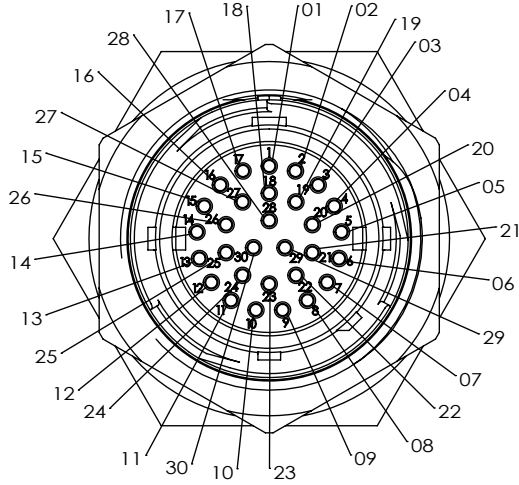
DESCRIPTION: ACCLIMATE CIRC. FIELD TERM. KIT

DWG. NO. ACRK-22-XX-X-X-XX-M-X

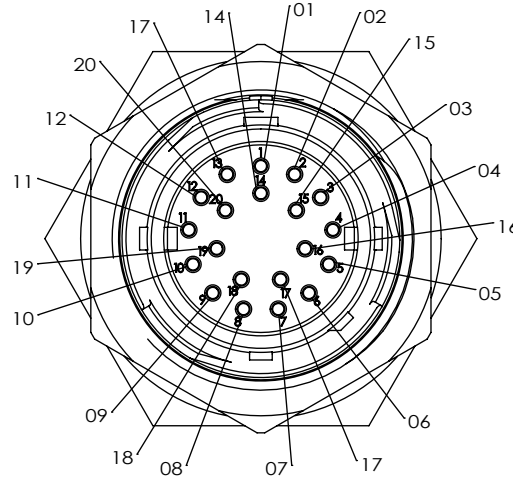
BY: VICKY Z 06/16/2011 SHEET 1 OF 4

-T END OPTIONS

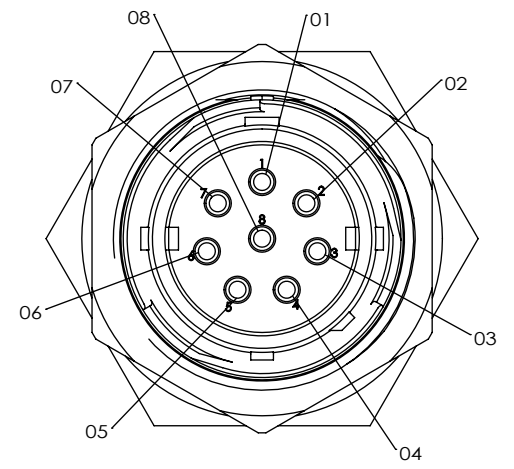
-01: 30 POS  
Ø 1.0 TERMINALS



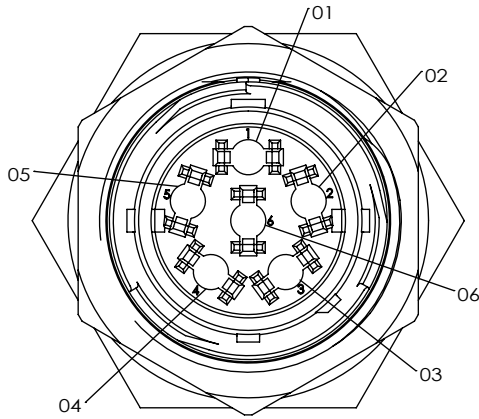
-02: 20 POS  
Ø 1.0 TERMINALS



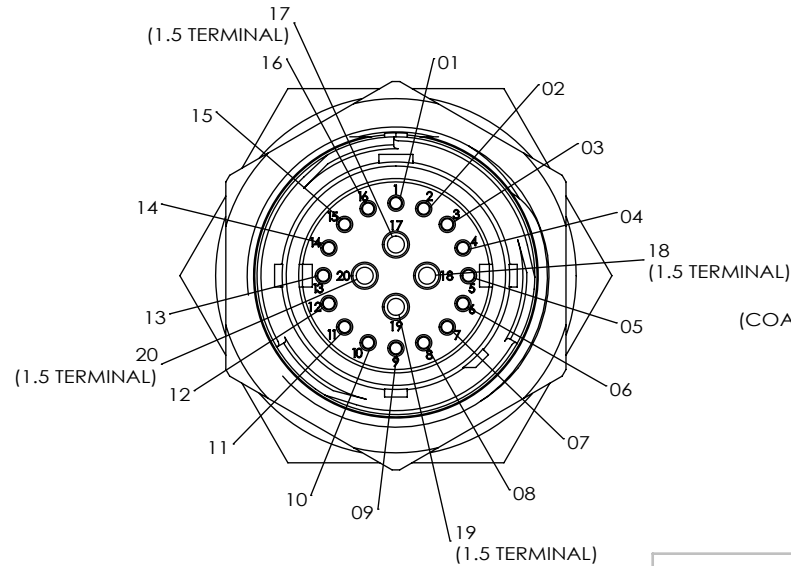
-03: 8 POS  
Ø 1.5 TERMINALS



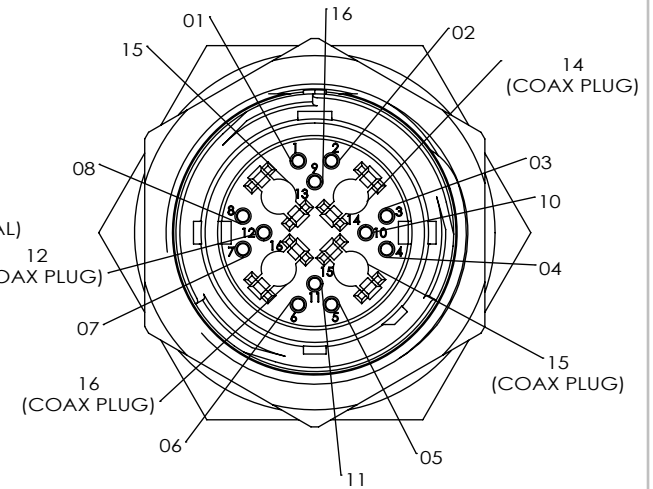
\*-04: 6 POS  
COAX PLUG



-05: 20 POS COMBO  
16 X Ø 1.0 TERMINALS  
4 X Ø 1.5 TERMINALS



\*-06: 16 POS COMBO  
4 X COAX PLUG  
12 X Ø 1.0 TERMINALS



\* = NOT RELEASED FOR PRODUCTION

PROPRIETARY NOTE

THIS DOCUMENT CONTAINS CONFIDENTIAL AND PROPRIETARY INFORMATION AND ALL DESIGN, MANUFACTURING, REPRODUCTION, USE, PATENT RIGHTS AND SALES RIGHTS ARE EXPRESSLY RESERVED BY SAMTEC, INC. THIS DOCUMENT SHALL NOT BE DISCLOSED, IN WHOLE OR PART, TO ANY UNAUTHORIZED PERSON OR ENTITY NOR REPRODUCED, TRANSFERRED OR INCORPORATED IN ANY OTHER PROJECT IN ANY MANNER WITHOUT THE EXPRESS WRITTEN CONSENT OF SAMTEC, INC.

DO NOT SCALE DRAWING

SHEET SCALE: 1.5:1

**samtec**

520 PARK EAST BLVD, NEW ALBANY, IN 47150  
PHONE: 812-944-6733 FAX: 812-948-5047  
e-Mail info@SAMTEC.com code 55322

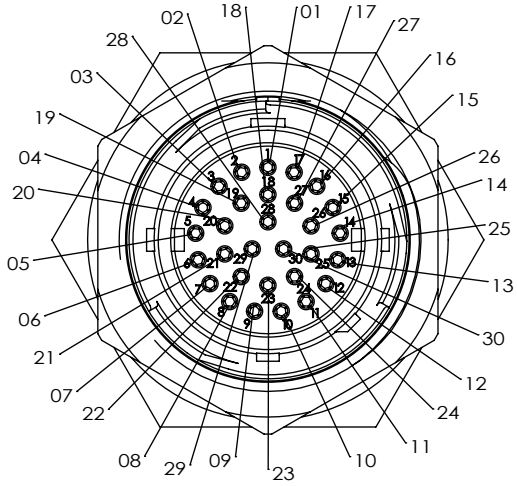
DESCRIPTION: ACCLIMATE CIRC. FIELD TERM. KIT

DWG. NO. ACRK-22-XX-X-X-XX-M-X

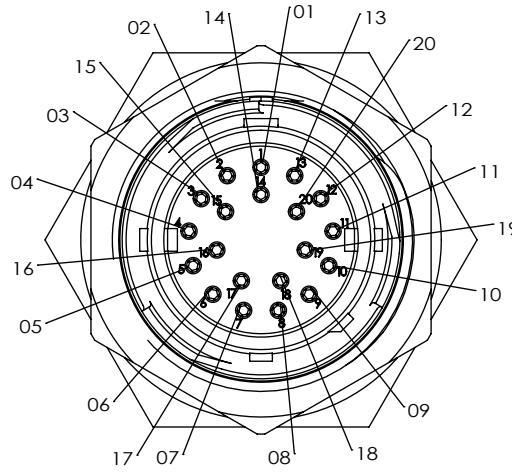
BY: VICKY Z 06/16/2011 SHEET 2 OF 4

-S END OPTIONS

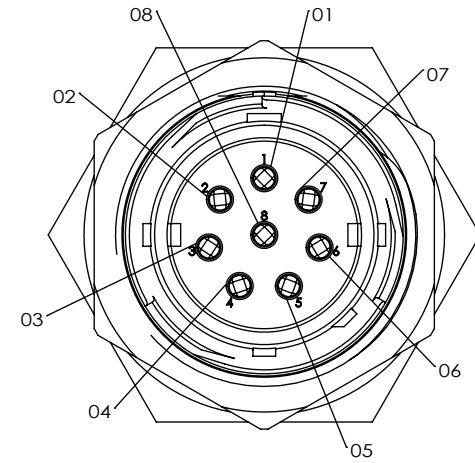
-01: 30 POS  
Ø 1.0 SOCKETS



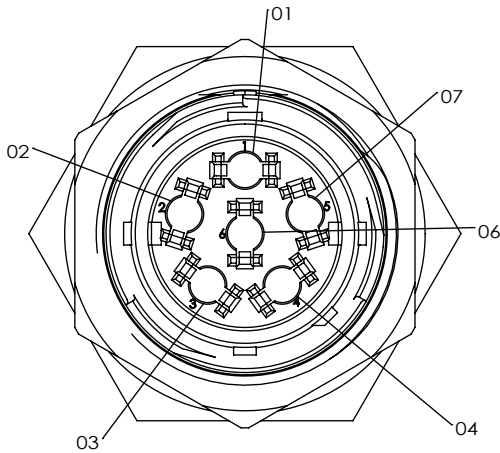
-02: 20 POS  
Ø 1.0 SOCKETS



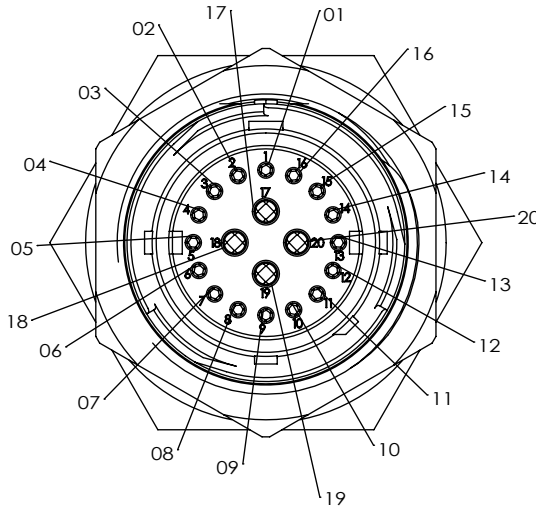
-03: 8 POS  
Ø 1.5 SOCKETS



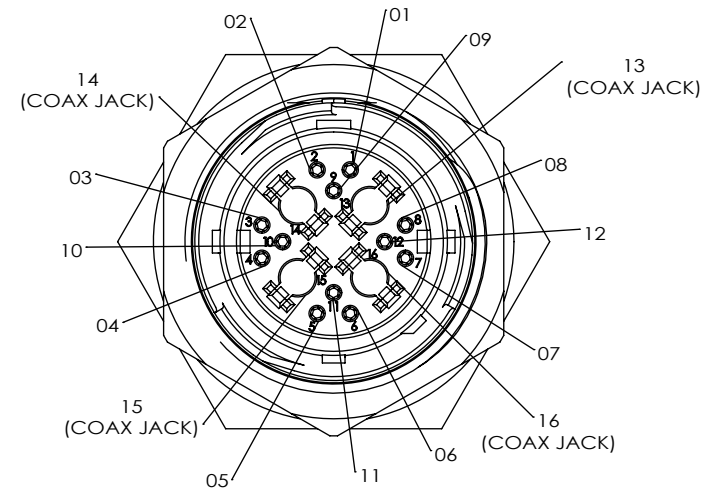
\*-04: 6 POS  
COAX JACK



-05: 20 POS COMBO  
16 X Ø 1.0 SOCKETS  
4 X Ø 1.5 SOCKETS



\*-06: 16 POS COMBO  
4 X COAX JACK  
12 X Ø 1.0 SOCKETS



**\* = NOT RELEASED FOR PRODUCTION**

**PROPRIETARY NOTE**  
THIS DOCUMENT CONTAINS CONFIDENTIAL AND PROPRIETARY INFORMATION AND ALL DESIGN, MANUFACTURING, REPRODUCTION, USE, PATENT RIGHTS AND SALES RIGHTS ARE EXPRESSLY RESERVED BY SAMTEC, INC. THIS DOCUMENT SHALL NOT BE DISCLOSED, IN WHOLE OR PART, TO ANY UNAUTHORIZED PERSON OR ENTITY NOR REPRODUCED, TRANSFERRED OR INCORPORATED IN ANY OTHER PROJECT IN ANY MANNER WITHOUT THE EXPRESS WRITTEN CONSENT OF SAMTEC, INC.

DO NOT SCALE DRAWING

SHEET SCALE: 1.5:1



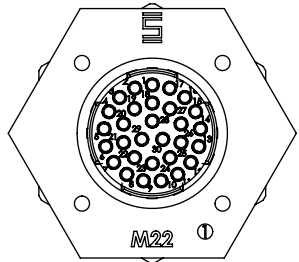
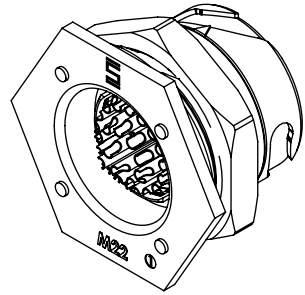
520 PARK EAST BLVD, NEW ALBANY, IN 47150  
PHONE: 812-944-6733 FAX: 812-948-5047  
e-Mail info@SAMTEC.com code 55322

DESCRIPTION: ACCLIMATE CIRC. FIELD TERM. KIT

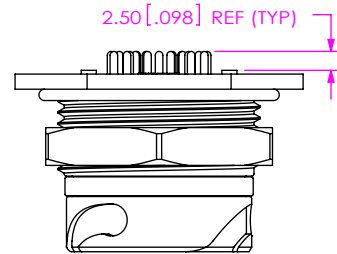
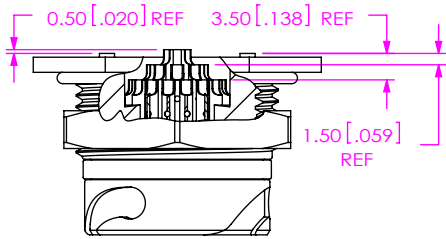
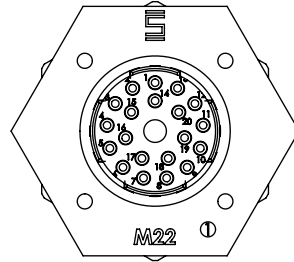
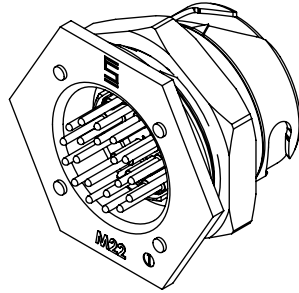
DWG. NO. ACRK-22-XX-X-X-XX-M-X

BY: VICKY Z 06/16/2011 SHEET 3 OF 4

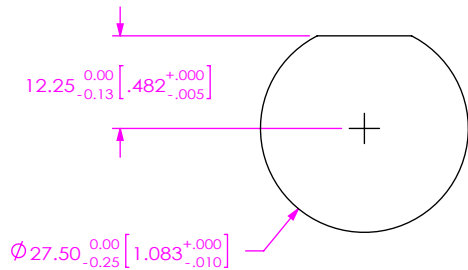
**-C: SOLDER CUP**  
ACRK-22-01-X-S-C-M-1 SHOWN



**-B1: BOARD MOUNT**  
ACRK-22-02-X-S-B1-M-1 SHOWN

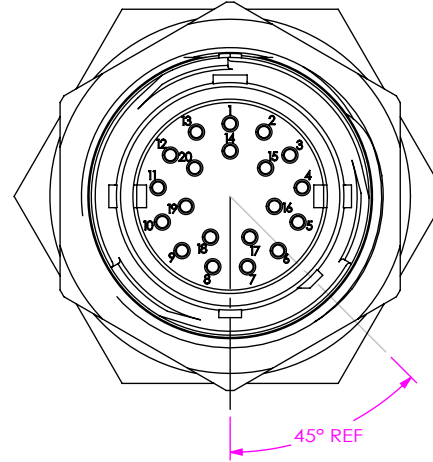


**RECOMMENDED PANEL OPENING**  
SEE NOTE 4

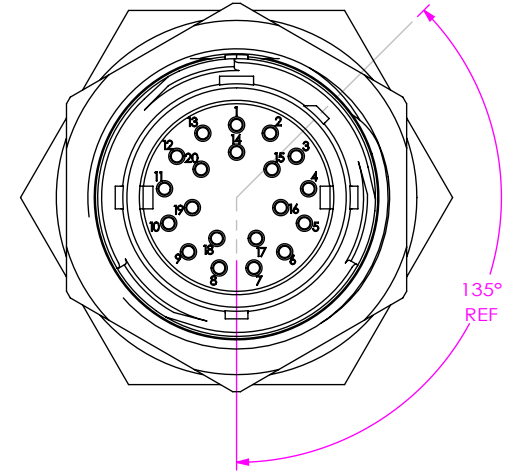


**KEY FEATURE**  
SEE NOTE 2

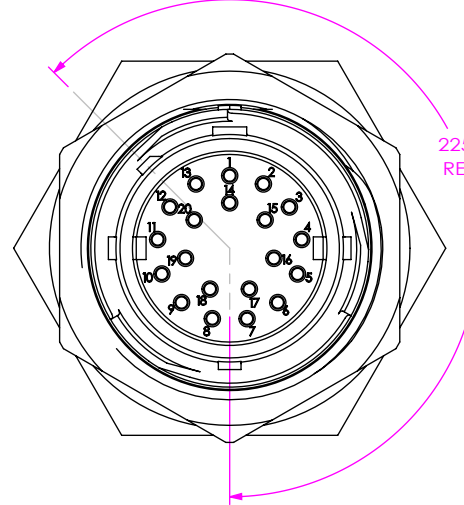
**-1**  
ORANGE KEY RING



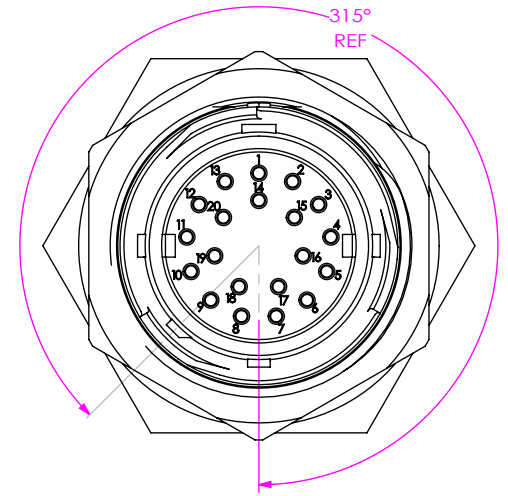
**-2**  
GREEN KEY RING



**-3**  
BLUE KEY RING



**-4**  
YELLOW KEY RING



**PROPRIETARY NOTE**  
THIS DOCUMENT CONTAINS CONFIDENTIAL AND PROPRIETARY INFORMATION AND ALL DESIGN, MANUFACTURING, REPRODUCTION, USE, PATENT RIGHTS AND SALES RIGHTS ARE EXPRESSLY RESERVED BY SAMTEC, INC. THIS DOCUMENT SHALL NOT BE DISCLOSED, IN WHOLE OR PART, TO ANY UNAUTHORIZED PERSON OR ENTITY NOR REPRODUCED, TRANSFERRED OR INCORPORATED IN ANY OTHER PROJECT IN ANY MANNER WITHOUT THE EXPRESS WRITTEN CONSENT OF SAMTEC, INC.

DO NOT SCALE DRAWING

SHEET SCALE: 1:1



520 PARK EAST BLVD, NEW ALBANY, IN 47150  
PHONE: 812-944-6733 FAX: 812-948-5047  
e-Mail info@SAMTEC.com code 55322

DESCRIPTION: ACCLIMATE CIRC. FIELD TERM. KIT

DWG. NO. ACRK-22-XX-X-X-XX-M-X

BY: VICKY Z 06/16/2011 SHEET 4 OF 4