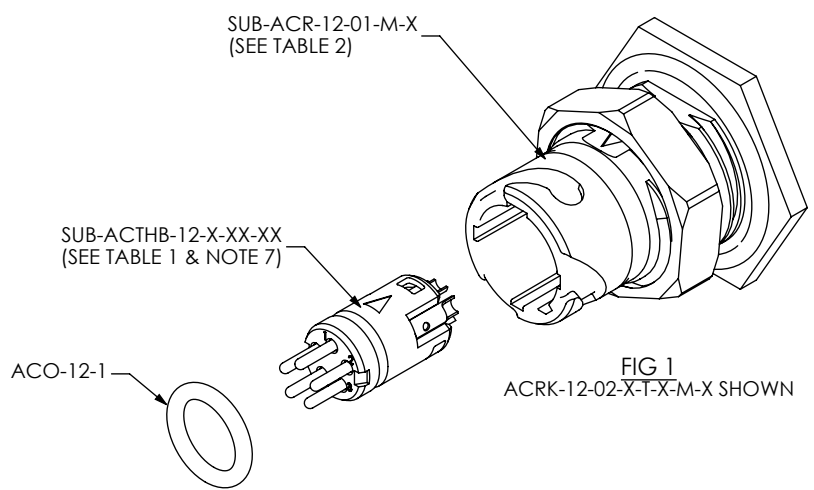


DO NOT SCALE FROM THIS PRINT

DESIGNED & DIMENSIONED IN MILLIMETERS [INCHES]

ACRK-12-XX-X-X-XX-M-X



- LEAD STYLE**
- 01: 4 POS (1.0 TERM/SKT), 20 - 24 AWG
 - 02: 5 POS (1.0 TERM/SKT), 20 - 24 AWG
 - 03: 6 POS (0.5 TERM/SKT), 26 - 30 AWG
 - 04: 8 POS (0.5 TERM/SKT), 26 - 30 AWG
 - 05: 6 POS COMBO (2x1.0 TERM/SKT), 20 - 24 AWG (4x0.5 TERM/SKT), 26 - 30 AWG
- PLATING**
- G: 10µ" GOLD ON CONTACT
 - H: 30µ" GOLD ON CONTACT
- KEYING FEATURE (SEE NOTE 3, SEE SHT 2)**
- 1: ORANGE
 - 2: GREEN
 - 3: BLUE
 - 4: YELLOW
- STYLE**
- M: METAL
- TERMINATION**
- C: SOLDER CUP
 - B1: .062 BOARD MOUNT
- GENDER**
- T: TERMINAL
 - S: SOCKET

FIG 1
ACRK-12-02-X-T-X-M-X SHOWN

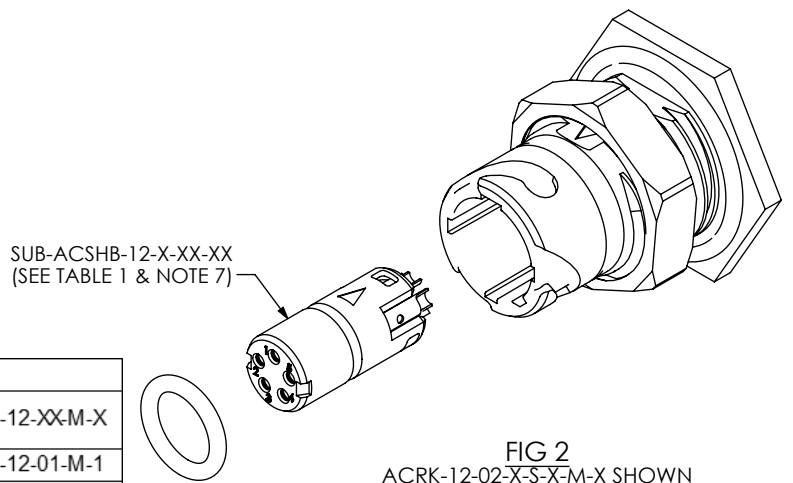


FIG 2
ACRK-12-02-X-S-X-M-X SHOWN (SAME AS FIG 1, EXCEPT AS SHOWN)

KEYING FEATURE	SUB-ACR-12-XX-M-X
-1	SUB-ACR-12-01-M-1
-2	SUB-ACR-12-01-M-2
-3	SUB-ACR-12-01-M-3
-4	SUB-ACR-12-01-M-4

LEAD STYLES	GENDER	TERMINATION			
		-C: SOLDER CUP		-BX: BOARD MOUNT	
		PLATING		PLATING	
		-G	-H	-G	-H
-01	-T	SUB-ACTHB-12-G-01	SUB-ACTHB-12-H-01	SUB-ACTHB-12-G-01-BX	SUB-ACTHB-12-H-01-BX
-02	-T	SUB-ACTHB-12-G-02	SUB-ACTHB-12-H-02	SUB-ACTHB-12-G-02-BX	SUB-ACTHB-12-H-02-BX
-03	-T	SUB-ACTHB-12-G-03	SUB-ACTHB-12-H-03	SUB-ACTHB-12-G-03-BX	SUB-ACTHB-12-H-03-BX
-04	-T	SUB-ACTHB-12-G-04	SUB-ACTHB-12-H-04	SUB-ACTHB-12-G-04-BX	SUB-ACTHB-12-H-04-BX
-05	-T	SUB-ACTHB-12-G-05	SUB-ACTHB-12-H-05	SUB-ACTHB-12-G-05-BX	SUB-ACTHB-12-H-05-BX
-01	-S	SUB-ACSHB-12-G-01	SUB-ACSHB-12-H-01	SUB-ACSHB-12-G-01-BX	SUB-ACSHB-12-H-01-BX
-02	-S	SUB-ACSHB-12-G-02	SUB-ACSHB-12-H-02	SUB-ACSHB-12-G-02-BX	SUB-ACSHB-12-H-02-BX
-03	-S	SUB-ACSHB-12-G-03	SUB-ACSHB-12-H-03	SUB-ACSHB-12-G-03-BX	SUB-ACSHB-12-H-03-BX
-04	-S	SUB-ACSHB-12-G-04	SUB-ACSHB-12-H-04	SUB-ACSHB-12-G-04-BX	SUB-ACSHB-12-H-04-BX
-05	-S	SUB-ACSHB-12-G-05	SUB-ACSHB-12-H-05	SUB-ACSHB-12-G-05-BX	SUB-ACSHB-12-H-05-BX

- NOTES:
- ⊗ REPRESENTS A CRITICAL DIMENSION.
 - KITS TO BE PACKAGED & SHIPPED IN TRAYS. SEE SHT 4.
 - KEYING FEATURE DETERMINES COLOR OF KEY RING AND DUSTCAP LANYARD IF APPLICABLE.
 - REFER TO DCA-ACR-12-M-X PRINT FOR DUST CAP.
 - PANEL THICKNESS RANGE: 0.80[0.031] - 5.20[0.205]
 - TORQUE SPECIFICATION FOR PANEL NUT: 1.7Nm[15.00 IN-LB] - 2.3Nm[20.00 IN-LB].
 - RECOMMENDED INSERTION TOOL: CAT-AC-12-M.
 - PLACE HDRL-07 (LABEL) ON TRAY WHERE SHOWN. LABEL TO HAVE THE FOLLOWING PRINTED IN ARIAL FONT SIZE 9:
 LINE 1 - "FOR ASSEMBLY INSTRUCTIONS SEE"
 LINE 2 - "WWW.SAMTEC.COM/ACRKFIT"
 LINE 3 - PART NUMBER "ACRK-12-XX-X-X-XX-M-X"
 LINE 4 - SHOP ORDER NUMBER "XXXXXXX"

UNLESS OTHERWISE SPECIFIED, DIMENSIONS ARE IN MILLIMETERS. TOLERANCES ARE:

DECIMALS	ANGLES
X.X: ±0.3 [.01]	2°
X.XX: ±0.13 [.005]	
X.XXX: ±0.051 [.0020]	

MATERIAL:
 SHELL: ZAMAK 3
 INSULATOR: PBT, COLOR: BLACK
 O-RING: NITRILE
 NUT: BRASS
 COLOR RING: SILICONE
 TERMINALS: BRASS
 CONTACTS: BRASS/BeCu

DO NOT SCALE DRAWING SHEET SCALE: 3:2

PROPRIETARY NOTE
 THIS DOCUMENT CONTAINS INFORMATION CONFIDENTIAL AND PROPRIETARY TO SAMTEC, INC. AND SHALL NOT BE REPRODUCED OR TRANSFERRED TO OTHER DOCUMENTS OR DISCLOSED TO OTHERS OR USED FOR ANY PURPOSE OTHER THAN THAT WHICH IT WAS OBTAINED WITHOUT THE EXPRESSED WRITTEN CONSENT OF SAMTEC, INC.

520 PARK EAST BLVD, NEW ALBANY, IN 47150
 PHONE: 812.944.6733 FAX: 812.948.5047
 e-Mail: info@SAMTEC.com code 53322

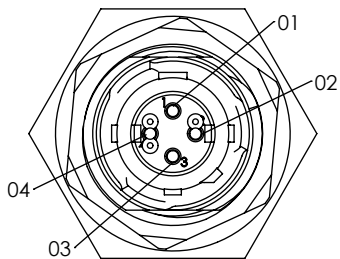
DESCRIPTION:
 ACCLIMATE CIRC. FIELD TERM. KIT

DWG. NO.
 ACRK-12-XX-X-X-XX-M-X

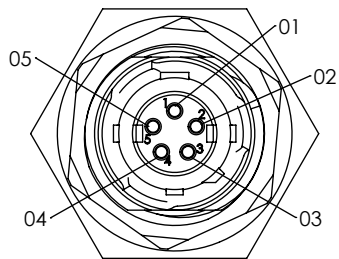
BY: D.SCHMELZ 1/18/2011 SHEET 1 OF 4

-T END OPTIONS

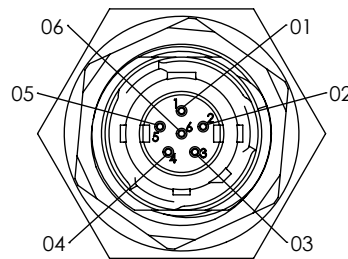
-01: 4 POS
Ø 1.0 TERMINALS



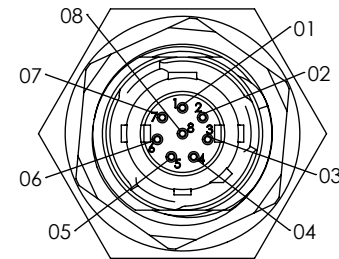
-02: 5 POS
Ø 1.0 TERMINALS



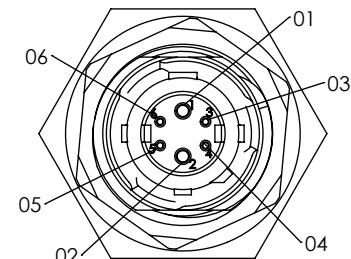
-03: 6 POS
Ø 0.5 TERMINALS



-04: 8 POS
Ø 0.5 TERMINALS

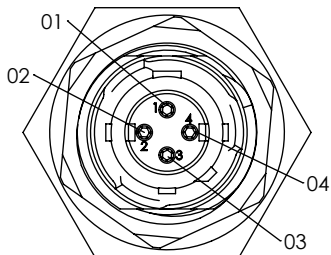


-05: 6 POS COMBO
2x Ø 1.0 TERMINALS
4x Ø 0.5 TERMINALS

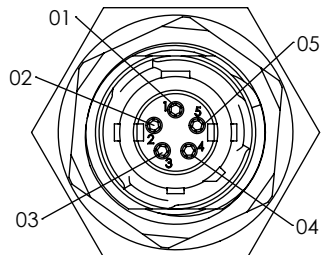


-S END OPTIONS

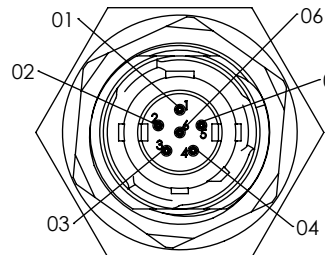
-01: 4 POS
Ø 1.0 SOCKETS



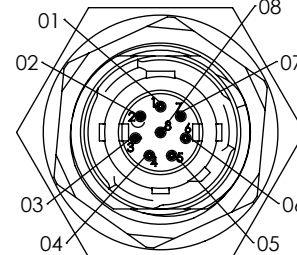
-02: 5 POS
Ø 1.0 SOCKETS



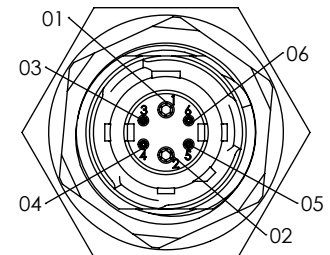
-03: 6 POS
Ø 0.5 SOCKETS



-04: 8 POS
Ø 0.5 SOCKETS

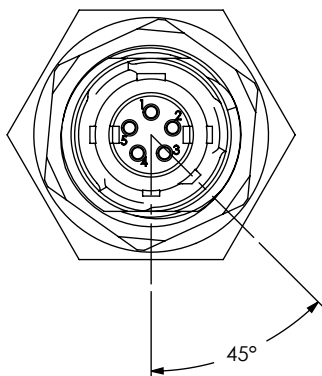


-05: 6 POS COMBO
2x Ø 1.0 SOCKETS
4x Ø 0.5 SOCKETS

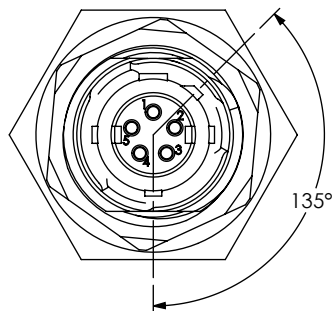


KEYING OPTIONS
(SEE NOTE 3)

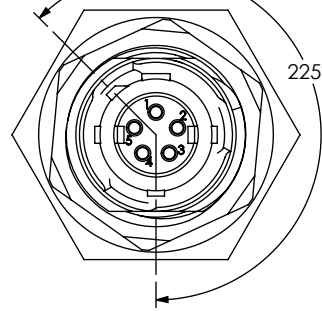
-1
ORANGE KEY RING



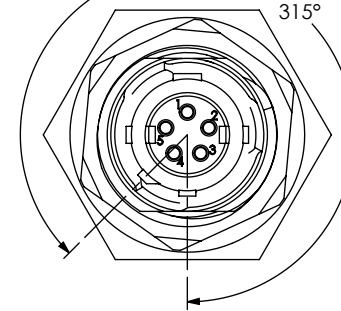
-2
GREEN KEY RING



-3
BLUE KEY RING



-4
YELLOW KEY RING



PROPRIETARY NOTE

THIS DOCUMENT CONTAINS INFORMATION CONFIDENTIAL AND PROPRIETARY TO SAMTEC, INC. AND SHALL NOT BE REPRODUCED OR TRANSFERRED TO OTHER DOCUMENTS OR DISCLOSED TO OTHERS OR USED FOR ANY PURPOSE OTHER THAN THAT WHICH IT WAS OBTAINED WITHOUT THE EXPRESSED WRITTEN CONSENT OF SAMTEC, INC.

DO NOT SCALE DRAWING

SHEET SCALE: 3:2



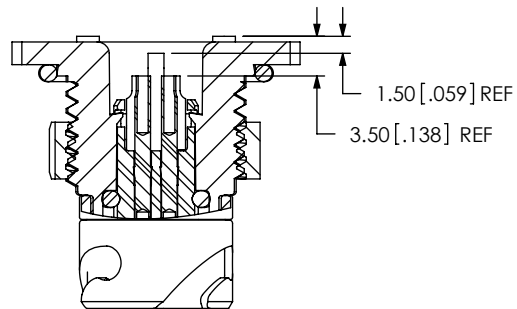
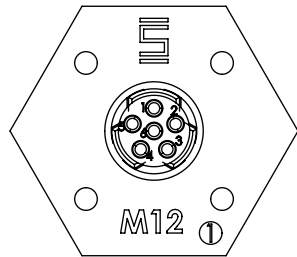
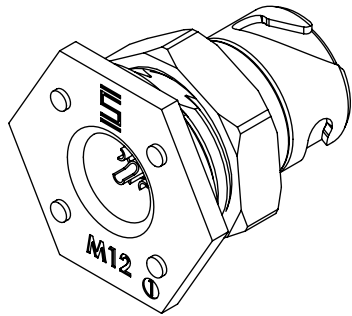
520 PARK EAST BLVD, NEW ALBANY, IN 47150
PHONE: 812-944-6733 FAX: 812-948-5047
e-Mail info@SAMTEC.com code 55322

DESCRIPTION: ACCLIMATE CIRC. FIELD TERM. KIT

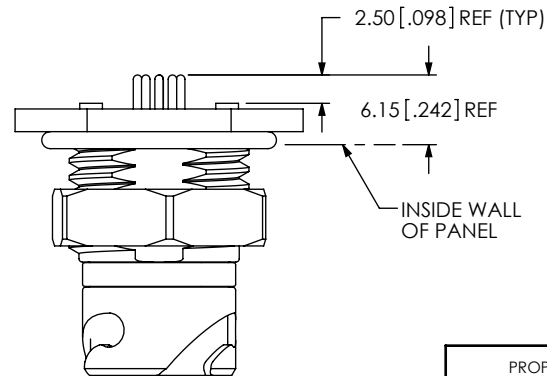
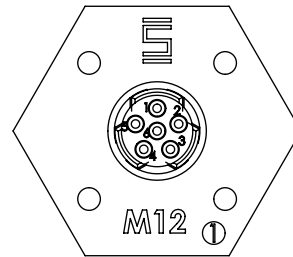
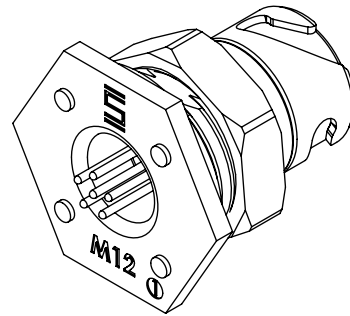
DWG. NO. ACRK-12-XX-X-X-XX-M-X

BY: D.SCHMELZ 1/18/2011 SHEET 2 OF 4

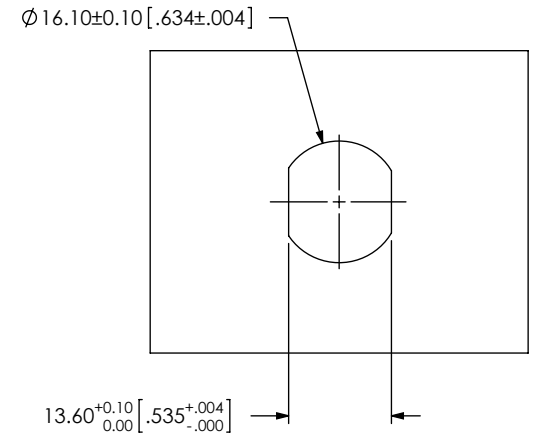
-C: SOLDER CUP
ACRK-12-03-X-S-C-M-T SHOWN



-B1: BOARD MOUNT
ACRK-12-03-X-S-B1-M-T SHOWN



RECOMMENDED PANEL OPENING
(SEE NOTE 5)



PROPRIETARY NOTE
THIS DOCUMENT CONTAINS INFORMATION CONFIDENTIAL AND PROPRIETARY TO SAMTEC, INC. AND SHALL NOT BE REPRODUCED OR TRANSFERRED TO OTHER DOCUMENTS OR DISCLOSED TO OTHERS OR USED FOR ANY PURPOSE OTHER THAN THAT WHICH IT WAS OBTAINED WITHOUT THE EXPRESSED WRITTEN CONSENT OF SAMTEC, INC.

DO NOT SCALE DRAWING

SHEET SCALE: 3:2

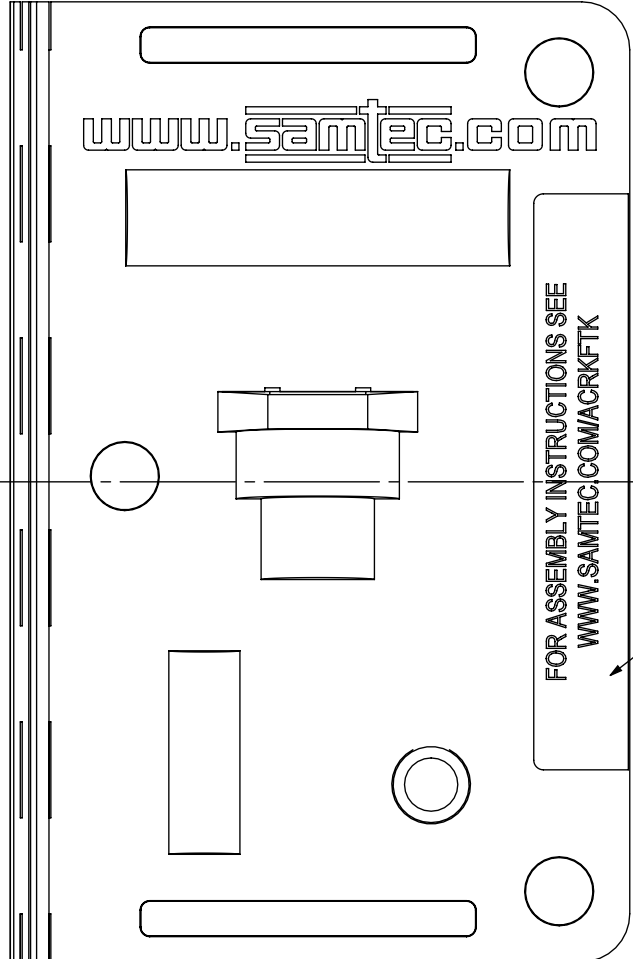
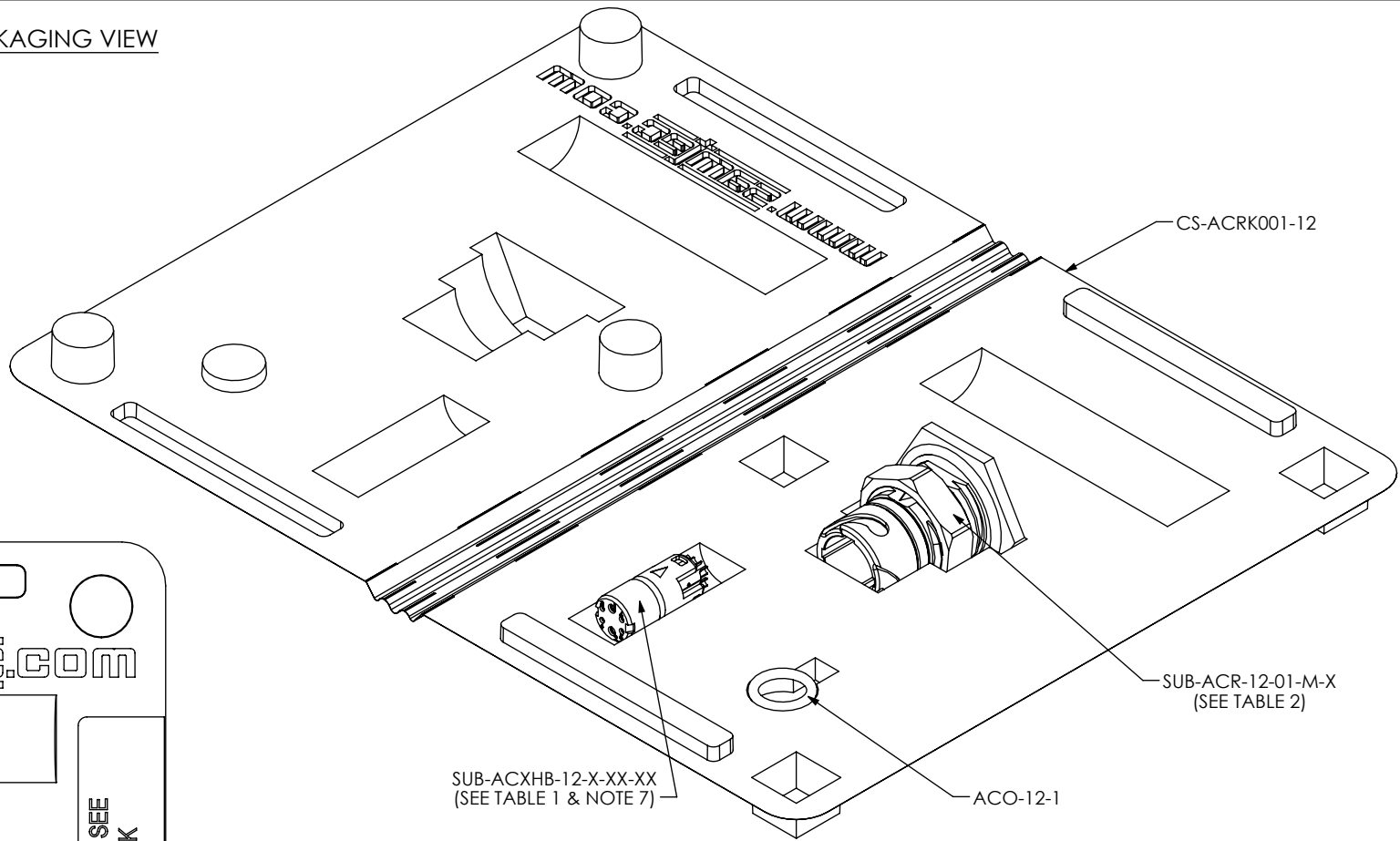
samtec

520 PARK EAST BLVD, NEW ALBANY, IN 47150
PHONE: 812-944-6733 FAX: 812-948-5047
e-Mail info@SAMTEC.com code 55322

DESCRIPTION: ACCLIMATE CIRC. FIELD TERM. KIT

DWG. NO. ACRK-12-XX-X-X-XX-M-X

BY: D.SCHMELZ 1/18/2011 SHEET 3 OF 4



SUB-ACXHB-12-X-XX-XX
(SEE TABLE 1 & NOTE 7)

CS-ACRK001-12

SUB-ACR-12-01-M-X
(SEE TABLE 2)

ACO-12-1

HDRL-07 (SEE NOTE 8)
(LINE 3 & 4 NOT SHOWN DUE TO LABEL
WRAPPING AROUND THE CLAM SHELL)

FOR ASSEMBLY INSTRUCTIONS SEE
WWW.SAMTEC.COM/ACRKFTK

25.40 [1.000] REF

PROPRIETARY NOTE
THIS DOCUMENT CONTAINS INFORMATION
CONFIDENTIAL AND PROPRIETARY TO
SAMTEC, INC. AND SHALL NOT BE REPRODUCED
OR TRANSFERRED TO OTHER DOCUMENTS OR
DISCLOSED TO OTHERS OR USED FOR ANY
PURPOSE OTHER THAN THAT WHICH IT WAS
OBTAINED WITHOUT THE EXPRESSED WRITTEN
CONSENT OF SAMTEC, INC.

DO NOT SCALE DRAWING

SHEET SCALE: 1:1

samtec

520 PARK EAST BLVD, NEW ALBANY, IN 47150
PHONE: 812-944-6733 FAX: 812-948-5047
e-Mail info@SAMTEC.com code 55322

DESCRIPTION: ACCLIMATE CIRC. FIELD TERM. KIT

DWG. NO. ACRC-12-XX-X-X-XX-M-X

BY: D.SCHMELZ 1/18/2011 SHEET 4 OF 4