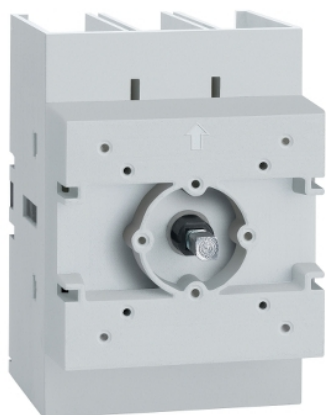


VLS3P030D2

Disconnect switch, TeSys VLS, body switch, 30A, 20HP at 480VAC, UL98, three phase, 50kA SCCR, size 2, door mount



Main

Range	TeSys
Product Name	TeSys VARIO LS
Device Short Name	VLS3P
Product Type	Switch body

Complementary

Mounting Support	Door
Performance Level	High performance
Number of Poles	3P
Contact Type and Composition	3 NO
Color	Gray
[Ue] UL Rated Operational Voltage	600 V AC 50/60 Hz UL 508
Network type	AC
Network frequency	50/60 Hz
UL Maxium Horsepower Ratings	10 Hp 200/208 V AC 10 Hp 240 V AC 20 Hp 480 V AC 30 Hp 600 V AC 2 Hp 120 V AC 5 hp 240 V AC
[Ue] IEC Rated Operational Voltage	690 V AC 50/60 Hz
IEC Rated Operational Power in W	15 KW 400 V AC-23A) 15 KW 500 V AC-23A) 30 kW 690 V AC-23A)
[Ie] Rated Operational Current	30 A Ue: 600 V UL98 30 A AC-21A Ue: 400 V 30 A AC-21A Ue: 500 V 30 A AC-21A Ue: 690 V 30 A AC-22A Ue: 400 V 30 A AC-22A Ue: 500 V 30 A AC-22A Ue: 690 V 30 A AC-23A Ue: 400 V 30 A AC-23A Ue: 500 V 30 A AC-23A Ue: 690 V
[Ith] Conventional Free Air Thermal Current	30 A 131 °F (55 °C)
[Ithe] Conventional Enclosed Thermal Current	30 A
Making capacity (I Rms)	630 A 690 V AC-23A 94.5 A 690 V AC-21A 189 A 690 V AC-22A
Breaking Capacity	94.5 A 690 V AC-21A) 189 A 690 V AC-22A) 504 A 690 V AC-23A)

The information provided in this documentation contains general descriptions and/or technical characteristics of the performance of the products contained herein. This documentation is not intended as a substitute for and is not to be used for determining suitability or reliability of these products for specific user applications. It is the duty of any such user or integrator to perform the appropriate and complete risk analysis, evaluation and testing of the products with respect to the relevant specific application or use thereof. Neither Schneider Electric Industries SAS nor any of its affiliates or subsidiaries shall be responsible or liable for misuse of the information contained herein.

SCCR	Circuit-breaker 100 A maximum: 100 kA at 480 V AC Fuse CC 100 A maximum: 100 kA at 480 V AC Fuse J 100 A maximum: 100 kA at 480 V AC Fuse T 100 A maximum: 100 kA at 480 V AC Fuse CC 60 A maximum: 50 kA at 600 V AC Fuse J 60 A maximum: 50 kA at 600 V AC Fuse T 60 A maximum: 50 kA at 600 V AC
Rated Conditional Short Circuit Current	50 kA 400 V 63 A gG
[Icm] Rated Short Circuit Making Capacity	3550 A 690 V
Intermittent duty class	Class 120 - 60 %
[Uimp] rated impulse withstand voltage	8 kV
[Icw] rated short-time withstand Rms current	2500 A 690 V 1 s
Mechanical Durability	30000 cycles
Electrical Durability	30000 cycles AC-21
UL Wire Size	AWG 12...AWG 1 copper
IEC Terminal Connection	Power circuit screw clamp terminals 0.08 in ² (50 mm ²) solid Power circuit screw clamp terminals 0.11 in ² (70 mm ²) flexible - without cable end
Tightening Torque	Power circuit 44.25...53.10 lbf.in (5...6 N.m) screw clamp terminals
Height	2.76 in (70 mm)
Width	2.76 in (70 mm)
Depth	3.94 in (100 mm)
Product Weight	0.80 lb(US) (0.365 kg)

Environment

Standards	UL98 CSA C22.2 No 4 IEC 60947-3
Product Certifications	CULus GL
Degree of Protection	IP20 conforming to IEC 60529
Mechanical Robustness	Vibrations 2...100 Hz Fc 0.7 g) IEC 60068-2-6 Shocks 11 ms Ea 15 gn) IEC 60068-2-27
Ambient Air Temperature for Operation	-13...131 °F (-25...55 °C)
Fire Resistance	1760 °F (960 °C) IEC 60695-2-11

Ordering and shipping details

Category	21734-TESYS VLS DISCONNECT SWITCHES
Discount Schedule	CP1
GTIN	3606481385963
Nbr. of units in pkg.	1
Package weight(Lbs)	13.23 oz (375.0 g)
Returnability	Yes

Packing Units

Unit Type of Package 1	PCE
Package 1 Height	2.76 in (7 cm)
Package 1 width	3.94 in (10 cm)
Package 1 Length	2.76 in (7 cm)
Unit Type of Package 2	S03
Number of Units in Package 2	27
Package 2 Weight	23.89 lb(US) (10.838 kg)
Package 2 Height	11.81 in (30 cm)
Package 2 width	11.81 in (30 cm)
Package 2 Length	15.75 in (40 cm)

Offer Sustainability

REACH Regulation	REACH Declaration
REACH free of SVHC	Yes
EU RoHS Directive	Compliant EU RoHS Declaration
Toxic heavy metal free	Yes
Mercury free	Yes
RoHS exemption information	Yes
China RoHS Regulation	China RoHS Declaration
WEEE	The product must be disposed on European Union markets following specific waste collection and never end up in rubbish bins.