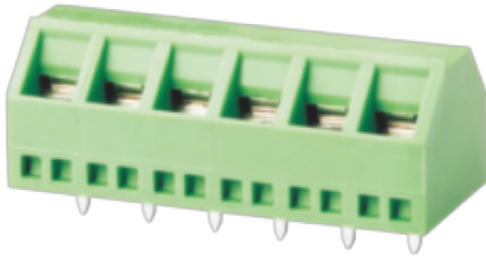


XD508-5.08
PCB SCREW TERMINAL BLOCK



PCB terminal block
 Rated current: 15 A
 Rated voltage: 300 V
 Wire range: 26-14 AWG
 Pitch: 5.08 mm
 Mounting: Wave soldering



UL/CUL

Use Group	B	C	D
Rate Voltage [V]	300	-	300
Rated Current [A]	15	-	10
Wire Range [AWG]	26~14		
Dielectric Voltage-Withstand	1.6KV		

IEC

Overvoltage Category	III	III	II
Contamination Class	3	2	2
Rated Voltage [V]	250	400	630
Rated Current [A]	17.5	17.5	17.5
Impulse withstand voltage [KV]	4	4	4
Conductor cross section[solid/flexible] [mm ²]	0.5~1.5		

Material

XD508-5.08
PCB SCREW TERMINAL BLOCK

Insulation Material	PA66
Flame retardant rating	UL94-0
Conductor Material	Copper alloy
Plating of conductor surface	Sn plated

Other Data

Pitch/Poles [mm]/[P]	5.08/2~24
Stripping Length [mm]	6~7
Screw/Torque(Max)[N.m]	M3/0.5
Operating temperature [°C]	-40~+105
Soldering temperature	260°C/5S
Pin dimensions [mm]	0.5*1.0
PCB Hole Diameter [mm]	Ø1.4

Dimensions

PCB opening diagram

