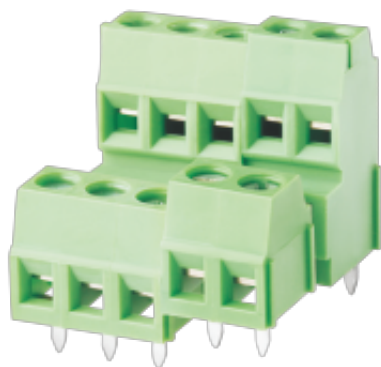


WJEK350B/WJEK381B  
PCB SCREW TERMINAL BLOCK



PCB terminal block  
Rated current: 10 A  
Rated voltage: 300 V  
Wire range: 28-16 AWG  
Pitch: 3.5 mm/3.81 mm  
Mounting: Wave soldering



UL/CUL

Use Group	B	C	D
Rate Voltage [V]	300	-	300
Rated Current [A]	10	-	10
Wire Range [AWG]	28~16		
Dielectric Voltage-Withstand	1.6KV		

IEC

Overvoltage Category	III	III	II
Contamination Class	3	2	2
Rated Voltage [V]	160	200	400
Rated Current [A]	13.5	13.5	13.5
Impulse withstand voltage [KV]	2.5	2.5	2.5
Conductor cross section[solid/flexible] [mm <sup>2</sup> ]	0.5~1.0		

Material

Insulation Material	PA66
Flame retardant rating	UL94V-0
Conductor Material	Copper alloy
Plating of conductor surface	Sn plated

**Other Data**

Pitch/Poles [mm]/[P]	3.5 , 3.81/2*2-2*24
Stripping Length [mm]	4~5
Screw/Torque(Max)[N.m]	M2/0.2
Operating temperature [°C]	-40~+105
Soldering temperature	260°C/5S
Pin dimensions [mm]	0.5*0.9
PCB Hole Diameter [mm]	Ø1.3

**Dimensions**

**PCB opening diagram**

