

WJ9KS-7.5
PLUG-IN TERMINAL BLOCK



PCB connector
Rated current: 16 A
Rated voltage: 300 V
Pitch: 7.5 mm



UL/CUL

Use Group	B	C	D
Rate Voltage [V]	300	300	600
Rated Current [A]	16	16	5
Wire Range [AWG]	28-12		
Dielectric Voltage-Withstand	1.6KV		

IEC

Overvoltage Category	III	III	II
Contamination Class	3	2	2
Rated Voltage [V]	500	630	1000
Rated Current [A]	20	20	20
Impulse withstand voltage [KV]	6	6	6
Conductor cross section[solid/flexible] [mm ²]	0.2~2.5		

Material

Insulation Material	PA66
Flame retardant rating	UL94V-0

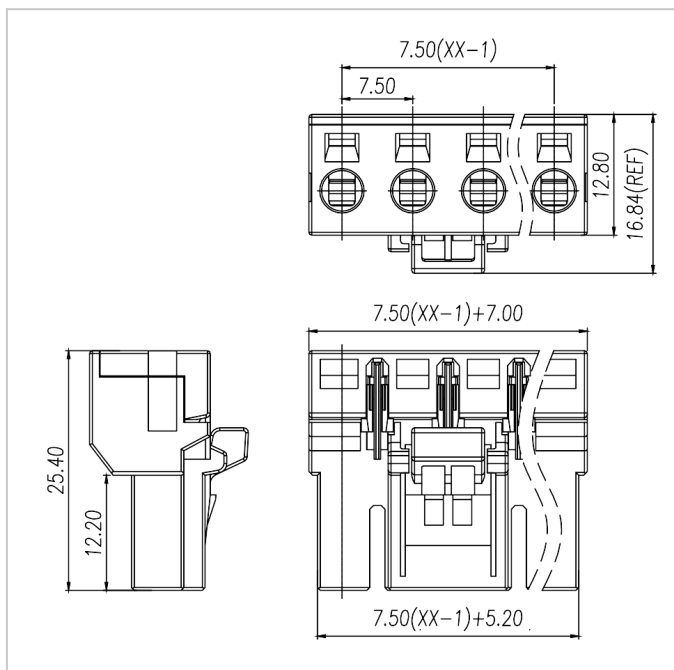
WJ9KS-7.5
PLUG-IN TERMINAL BLOCK

Conductor Material	Copper alloy
Plating of conductor surface	Au plated area

Other Data

Pitch/Poles [mm]/[P]	7.5/2-12
Stripping Length [mm]	7-8
Screw/Torque(Max)[N.m]	/
Operating temperature [°C]	
Soldering temperature	/
Pin dimensions [mm]	/
PCB Hole Diameter [mm]	/

Dimensions



Accessories