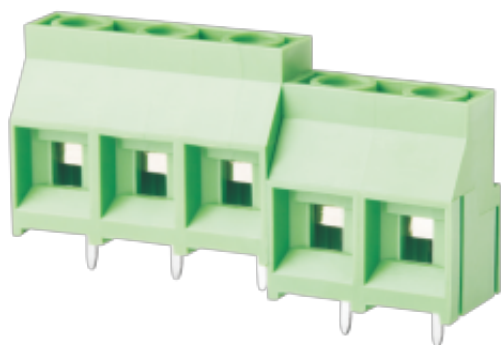


WJ950-9.5
PCB SCREW TERMINAL BLOCK



PCB terminal block
 Rated current: 30 A
 Rated voltage: 300 V
 Wire range: 26-10 AWG
 Pitch: 9.5 mm
 Mounting: Wave soldering



UL/CUL

Use Group	B	C	D
Rate Voltage [V]	300	300	300
Rated Current [A]	30	30	30
Wire Range [AWG]		26~10	
Dielectric Voltage-Withstand		1.6KV	

IEC

Overvoltage Category	III	III	II
Contamination Class	3	2	2
Rated Voltage [V]	630	1000	1000
Rated Current [A]	32	32	32
Impulse withstand voltage [KV]	8	8	8
Conductor cross section[solid/flexible] [mm ²]		0.5~4.0	

Material

WJ950-9.5
PCB SCREW TERMINAL BLOCK

Insulation Material	PA66
Flame retardant rating	UL94V-0
Conductor Material	Copper alloy
Plating of conductor surface	Sn plated

Other Data

Pitch/Poles [mm]/[P]	9.5/2~24
Stripping Length [mm]	6~7
Screw/Torque(Max)[N.m]	M3/0.5
Operating temperature [°C]	-40~+105
Soldering temperature	260°C/5S
Pin dimensions [mm]	0.8*1.0
PCB Hole Diameter [mm]	Ø1.6

Dimensions

PCB opening diagram

