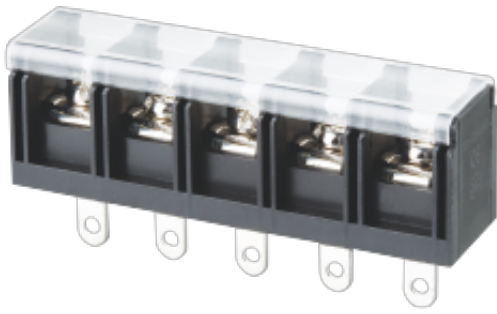


WJ78H
BARRIER TERMINAL BLOCK



Material

Screws	M4.0 Steel Ni plated
Pin Header	Copper alloy , Sn plated
Housing	PA66 , UL94V-0

Electrical

Standard	UL	IEC
Rated Voltage	600V	630V
Rated current	40A	41A
Wire range	18-10AWG	6mm ²
Contact Resistance	20mΩ	
Insulation resistance	500MΩ/DC500V	
Withstanding voltage	AC2000V/1Min	

Other Data

Pitch/Poles [mm]/[P]	13.0/2-20
Operating temperature [°C]	-40°C~+105°C
Torque	12.24Kgf.cm/1.2Nm/10.6Lb.in

Dimensions

PCB opening diagram

