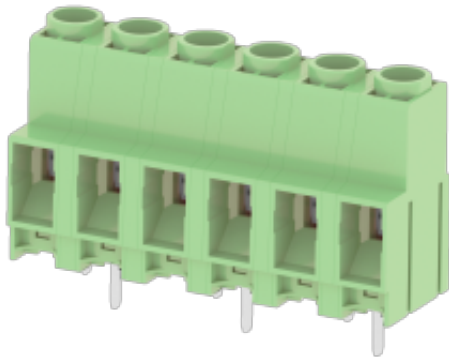


WJ635VK-8.25
PCB SCREW TERMINAL BLOCK



PCB terminal block
 Rated current: 30 A
 Rated voltage: 600 V
 Wire range: 24-10 AWG
 Pitch: 8.25 mm
 Mounting: Wave soldering



UL/CUL

Use Group	B	C	D
Rate Voltage [V]	600	600	600
Rated Current [A]	30	30	5
Wire Range [AWG]	24-10		
Dielectric Voltage-Withstand	2.2VK		

IEC

Overvoltage Category	III	III	II
Contamination Class	3	2	2
Rated Voltage [V]	800	1000	1000
Rated Current [A]	41	41	41
Impulse withstand voltage [KV]	8	8	8
Conductor cross section[solid/flexible] [mm ²]	0.2-6.0		

Material

WJ635VK-8.25
PCB SCREW TERMINAL BLOCK

Insulation Material	PA66
Flame retardant rating	UL94V-0
Conductor Material	Copper alloy
Plating of conductor surface	Sn plated

Other Data

Pitch/Poles [mm]/[P]	8.25/2~18
Stripping Length [mm]	8
Screw/Torque(Max)[N.m]	M3/0.5
Operating temperature [°C]	-40~+105
Soldering temperature	260°C/5S
Pin dimensions [mm]	0.9*0.9
PCB Hole Diameter [mm]	Ø1.5

Dimensions

PCB opening diagram

