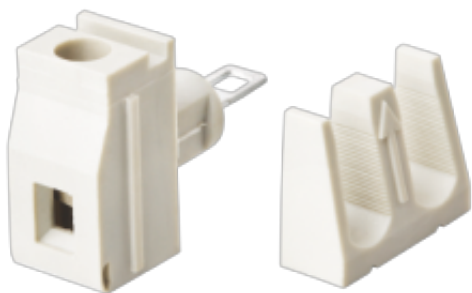


WJ410-10.0
PCB SCREW TERMINAL BLOCK



PCB terminal block
Rated current: 20 A
Rated voltage: 300 V
Wire range: 26-12 AWG
Pitch: 10.0 mm



UL/CUL

Use Group	B	C	D
Rate Voltage [V]	300	-	300
Rated Current [A]	20	-	10
Wire Range [AWG]	26~12		
Dielectric Voltage-Withstand	2KV		

IEC

Overvoltage Category	III	III	II
Contamination Class	3	2	2
Rated Voltage [V]	250	400	630
Rated Current [A]	24	24	24
Impulse withstand voltage [KV]	6	6	6
Conductor cross section[solid/flexible] [mm ²]	0.5~2.5		

Material

Insulation Material	PA66
---------------------	------

Flame retardant rating	UL94V-0
Conductor Material	Copper alloy
Plating of conductor surface	Sn plated

Other Data

Pitch/Poles [mm]/[P]	10.0/1~24
Stripping Length [mm]	4.5~5
Screw/Torque(Max)[N.m]	
Operating temperature [°C]	-40~+105
Soldering temperature	260°C/5S
Pin dimensions [mm]	/
PCB Hole Diameter [mm]	/

Dimensions

