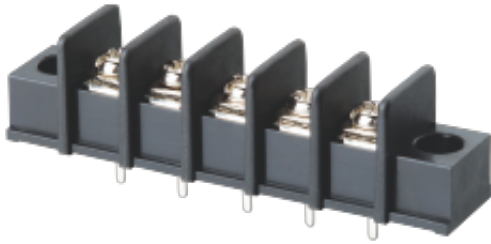


WJ35CM
BARRIER TERMINAL BLOCK



Material

| | |
|------------|--------------------------|
| Screws | M3.0 Steel Ni plated |
| Pin Header | Copper alloy , Sn plated |
| Housing | PA66 , UL94V-0 |

Electrical

| | | |
|-----------------------|--------------|--------------------|
| Standard | UL | IEC |
| Rated Voltage | 300V | 250V |
| Rated current | 20A | 24A |
| Wire range | 22-12AWG | 2.5mm ² |
| Contact Resistance | 20mΩ | |
| Insulation resistance | 500MΩ/DC500V | |
| Withstanding voltage | AC2000V/1Min | |

Other Data

| | |
|----------------------------|---------------------------|
| Pitch/Poles [mm]/[P] | 8.25/2-22 |
| Operating temperature [°C] | -40°C~+105°C |
| Torque | 5.1Kgf.cm/0.5Nm/4.43Lb.in |

Dimensions

PCB opening diagram

