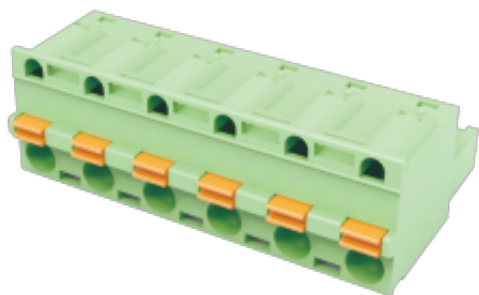


WJ2EDGKD-7.5/7.62
PLUG-IN TERMINAL BLOCK



PCB connector
 Rated current: 10 A
 Rated voltage: 300 V
 Wire range: 28-12 AWG
 Pitch: 7.5 mm/7.62 mm
 Connection method: Push-in spring connection



UL/CUL

| Use Group | B | C | D |
|------------------------------|-------|---|-----|
| Rate Voltage [V] | 300 | - | 300 |
| Rated Current [A] | 10 | - | 10 |
| Wire Range [AWG] | 28-12 | | |
| Dielectric Voltage-Withstand | 1.6KV | | |

IEC

| Overvoltage Category | III | III | II |
|--|---------|-----|------|
| Contamination Class | 3 | 2 | 2 |
| Rated Voltage [V] | 400 | 630 | 1000 |
| Rated Current [A] | 12 | 12 | 12 |
| Impulse withstand voltage [KV] | 6 | 6 | 6 |
| Conductor cross section[solid/flexible] [mm ²] | 0.2-2.5 | | |

Material

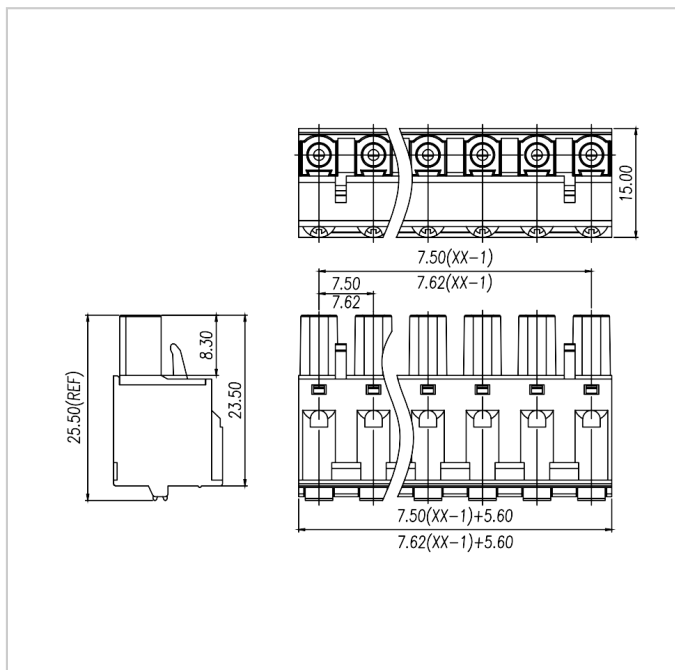
WJ2EDGKD-7.5/7.62
PLUG-IN TERMINAL BLOCK

| | |
|------------------------------|--------------|
| Insulation Material | PA66 |
| Flame retardant rating | UL94V-0 |
| Conductor Material | Copper alloy |
| Plating of conductor surface | Sn plated |

Other Data

| | | |
|----------------------------|----------|-----------|
| Pitch/Poles [mm]/[P] | 7.5/2-24 | 7.62/2-16 |
| Stripping Length [mm] | 9-10 | |
| Screw/Torque(Max)[N.m] | / | |
| Operating temperature [°C] | -40~+105 | |
| Soldering temperature | / | |
| Pin dimensions [mm] | / | |
| PCB Hole Diameter [mm] | / | |

Dimensions



Accessories