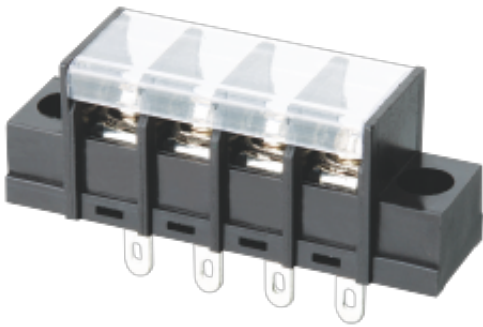


**WJ28HM**  
BARRIER TERMINAL BLOCK



**Material**

Screws	M3.0 Steel Ni plated
Pin Header	Copper alloy , Sn plated
Housing	PA66 , UL94V-0

**Electrical**

Standard	UL	IEC
Rated Voltage	300V	400V
Rated current	15A	24A
Wire range	22-14AWG	2.5mm <sup>2</sup>
Contact Resistance	20mΩ	
Insulation resistance	500MΩ/DC500V	
Withstanding voltage	AC2000V/1Min	
Temp.range	-40°C~+105°C	
Torque		

**Other Data**

Pitch/Poles [mm]/[P]	7.62/2-20
----------------------	-----------

WJ28HM  
BARRIER TERMINAL BLOCK

Operating temperature [°C]	-40°C~+105°C
Torque	5.10Kgf.cm/0.5Nm/4.50Lb.in

Dimensions

PCB opening diagram

