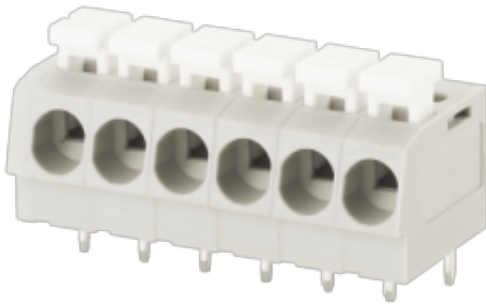


WJ237-5.0  
PCB SPRING TERMINAL BLOCK



PCB spring terminal block  
 Rated current: 12 A  
 Rated voltage: 300 V  
 Wire range: 20-12 AWG  
 Pitch: 5.0 mm  
 Mounting: Wave soldering



UL/CUL

Use Group	B	C	D
Rate Voltage [V]	300	-	300
Rated Current [A]	12	-	10
Wire Range [AWG]	20~12		
Dielectric Voltage-Withstand	1.6KV		

IEC

Overvoltage Category	III	III	II
Contamination Class	3	2	2
Rated Voltage [V]	250	320	630
Rated Current [A]	24	24	24
Impulse withstand voltage [KV]	4	4	4
Conductor cross section[solid/flexible] [mm <sup>2</sup> ]	0.25~2.5		

Material

# WJ237-5.0

## PCB SPRING TERMINAL BLOCK

Insulation Material	PA66
Flame retardant rating	UL94V-0
Conductor Material	Copper alloy
Plating of conductor surface	Sn plated

### Other Data

Pitch/Poles [mm]/[P]	5.0/1~30
Stripping Length [mm]	10~11
Screw/Torque(Max)[N.m]	/
Operating temperature [°C]	-40~+105
Soldering temperature	260°C/5S
Pin dimensions [mm]	0.8*0.6
PCB Hole Diameter [mm]	∅1.3

### Dimensions

### PCB opening diagram

