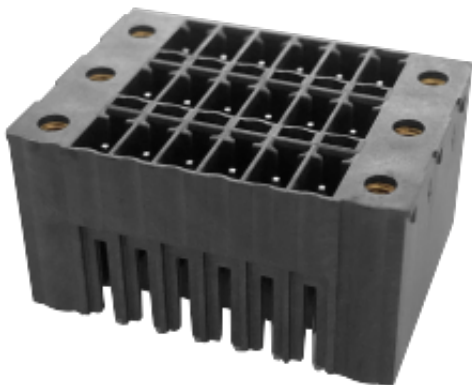


WJ15EDGVH3M-THT-3.5  
PLUG-IN TERMINAL BLOCK



PCB connector  
Rated current: 8 A  
Rated voltage: 300 V  
Pitch: 3.5 mm  
Mounting: Reflow soldering



UL/CUL

| Use Group                    | B     | C | D |
|------------------------------|-------|---|---|
| Rate Voltage [V]             | 300   | - | - |
| Rated Current [A]            | 8     | - | - |
| Wire Range [AWG]             | /     |   |   |
| Dielectric Voltage-Withstand | 1.6KV |   |   |

IEC

| Overvoltage Category                                       | III | III | II  |
|--|-----|-----|-----|
| Contamination Class  | 3   | 2   | 2   |
| Rated Voltage [V]  | 150 | 150 | 250 |
| Rated Current [A]  | 8   | 8   | 8   |
| Impulse withstand voltage [KV]                             | 2.5 | 2.5 | 2.5 |
| Conductor cross section[solid/flexible] [mm <sup>2</sup> ] | /   |     |     |

Material

|                     |     |
|---------------------|-----|
| Insulation Material | LCP |
|---------------------|-----|

**WJ15EDGVH3M-THT-3.5**  
**PLUG-IN TERMINAL BLOCK**

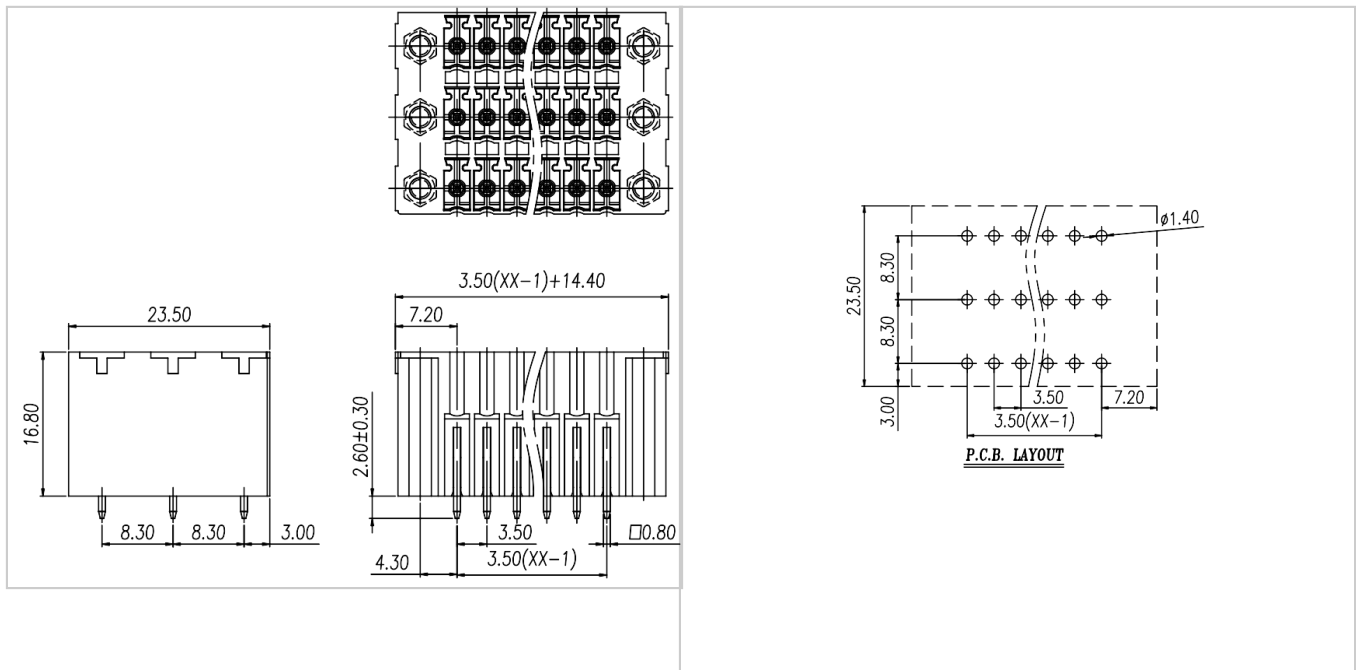
|                              |              |
|------------------------------|--------------|
| Flame retardant rating       | UL94V-0      |
| Conductor Material           | Copper alloy |
| Plating of conductor surface | Sn plated    |

**Other Data**

|                            |              |
|----------------------------|--------------|
| Pitch/Poles [mm]/[P]       | 3.5/3*2-3*24 |
| Stripping Length [mm]      | /            |
| Screw/Torque(Max)[N.m]     |              |
| Operating temperature [°C] | -40~+130     |
| Soldering temperature      | 285°C/10S    |
| Pin dimensions [mm]        | 0.8*0.8      |
| PCB Hole Diameter [mm]     | Ø1.4         |

**Dimensions**

**PCB opening diagram**



**Accessories**