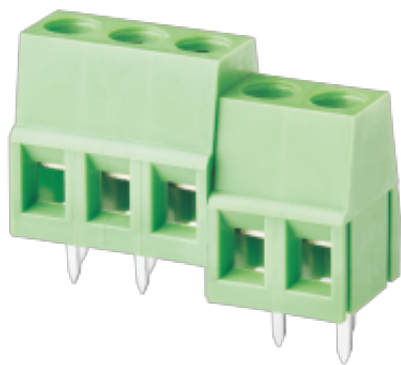


WJ128E-5.0
PCB SCREW TERMINAL BLOCK



PCB terminal block
 Rated current: 16 A
 Rated voltage: 300 V
 Wire range: 22-12 AWG
 Pitch: 5.0 mm
 Mounting: Wave soldering



UL/CUL

Use Group	B	C	D
Rate Voltage [V]	300	-	300
Rated Current [A]	16	-	10
Wire Range [AWG]	22~12		
Dielectric Voltage-Withstand	1.5KV		

IEC

Overvoltage Category	III	III	II
Contamination Class	3	2	2
Rated Voltage [V]	250	400	630
Rated Current [A]	24	24	24
Impulse withstand voltage [KV]	4	4	4
Conductor cross section[solid/flexible] [mm ²]	0.5~2.5		

Material

WJ128E-5.0
PCB SCREW TERMINAL BLOCK

Insulation Material	PA66
Flame retardant rating	UL94V-0
Conductor Material	Copper alloy
Plating of conductor surface	Sn plated

Other Data

Pitch/Poles [mm]/[P]	5.0/2~24
Stripping Length [mm]	6~7
Screw/Torque(Max)[N.m]	M2.5/0.4
Operating temperature [°C]	-40~+105
Soldering temperature	260°C/5S
Pin dimensions [mm]	0.8*0.9
PCB Hole Diameter [mm]	Ø1.5

Dimensions

PCB opening diagram

