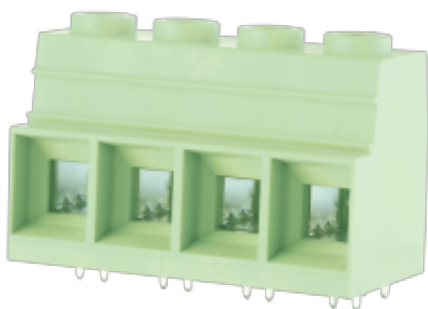


WJ118-15.0
PCB SCREW TERMINAL BLOCK



PCB terminal block
 Rated current: 115 A
 Rated voltage: 600 V
 Wire range: 20-2 AWG
 Pitch: 15.0 mm
 Mounting: Wave soldering



UL/CUL

Use Group	B	C	D
Rate Voltage [V]	600	600	600
Rated Current [A]	115	115	5
Wire Range [AWG]		20~2	
Dielectric Voltage-Withstand		2.2KV	

IEC

Overvoltage Category	III	III	II
Contamination Class	3	2	2
Rated Voltage [V]	1000	1000	1000
Rated Current [A]	125	125	125
Impulse withstand voltage [KV]	8	8	8
Conductor cross section[solid/flexible] [mm ²]		0.5~35	

Material

WJ118-15.0

PCB SCREW TERMINAL BLOCK

Insulation Material	PA66
Flame retardant rating	UL94V-0
Conductor Material	Copper alloy
Plating of conductor surface	Sn plated

Other Data

Pitch/Poles [mm]/[P]	15.0/1~12
Stripping Length [mm]	17~18
Screw/Torque(Max)[N.m]	M5.0/2.0
Operating temperature [°C]	-40~+105
Soldering temperature	260°C/5S
Pin dimensions [mm]	1.2*1.2
PCB Hole Diameter [mm]	Ø2.0

Dimensions

PCB opening diagram

