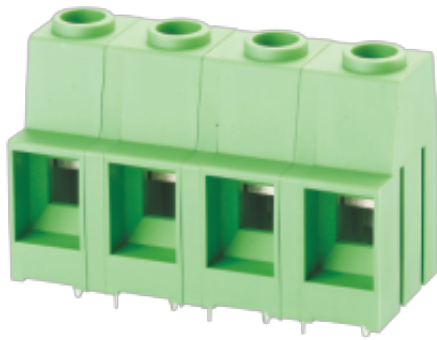


WJ116VK-12.7
PCB SCREW TERMINAL BLOCK



PCB terminal block
Rated current: 65 A
Rated voltage: 600 V
Wire range: 20-6 AWG
Pitch: 12.7 mm
Mounting: Wave soldering



UL/CUL

Use Group	B	C	D
Rate Voltage [V]	600	600	600
Rated Current [A]	65	65	5
Wire Range [AWG]		20~6	
Dielectric Voltage-Withstand		2.2KV	

IEC

Overvoltage Category	III	III	II
Contamination Class	3	2	2
Rated Voltage [V]	630	1000	1000
Rated Current [A]	76	76	76
Impulse withstand voltage [KV]	8	8	8
Conductor cross section[solid/flexible] [mm ²]		2.5~16	

Material

WJ116VK-12.7
PCB SCREW TERMINAL BLOCK

Insulation Material	PA66
Flame retardant rating	UL94V-0
Conductor Material	Copper alloy
Plating of conductor surface	Sn plated

Other Data

Pitch/Poles [mm]/[P]	12.7/2~14
Stripping Length [mm]	10
Screw/Torque(Max)[N.m]	M4/1.2
Operating temperature [°C]	-40~+105
Soldering temperature	260°C/5S
Pin dimensions [mm]	0.9*1.0
PCB Hole Diameter [mm]	Ø1.6

Dimensions

PCB opening diagram

