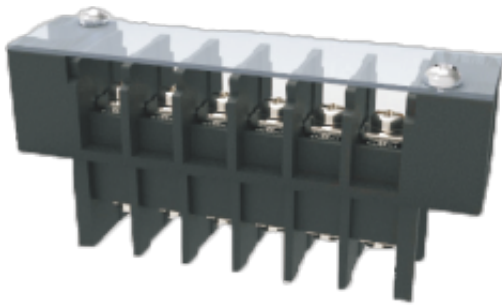


WJ10L-8.5
BARRIER TERMINAL BLOCK



Material

Screws	M3.0 Steel Ni plated
Pin Header	Copper alloy , Sn plated
Housing	PBT , UL94V-0

Electrical

Standard	UL
Rated Voltage	300V
Rated current	20A
Wire range	22-12AWG
Contact Resistance	20mΩ
Insulation resistance	500MΩ/DC500V
Withstanding voltage	AC2000V/1Min

Other Data

Pitch/Poles [mm]/[P]	8.5/2-15
Operating temperature [°C]	-40°C~+130°C
Torque	10.2Kgf.cm/1.0Nm/8.85Lb.in

Dimensions

PCB opening diagram

