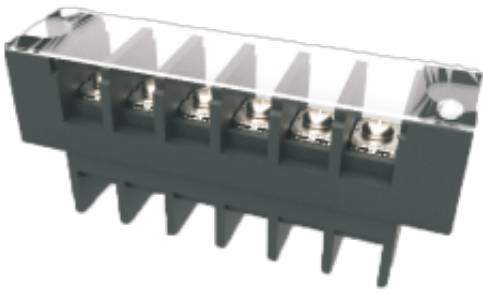


WJ10L-13.0
BARRIER TERMINAL BLOCK



Material

Screws	M4.0 Steel Ni plated
Pin Header	Copper alloy , Sn plated
Housing	PBT , UL94V-0

Electrical

Standard	UL
Rated Voltage	600V
Rated current	50A
Wire range	22-8AWG
Contact Resistance	20mΩ
Insulation resistance	1000MΩ/DC500V
Withstanding voltage	AC2500V/1Min

Other Data

Pitch/Poles [mm]/[P]	13.0/1-15
Operating temperature [°C]	-40°C~+130°C
Torque	12.24Kgf.cm/1.2Nm/10.6Lb.in

Dimensions

PCB opening diagram

