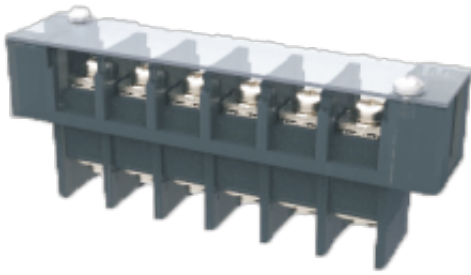


WJ10L-11.0  
BARRIER TERMINAL BLOCK



### Material

Screws	M4.0 Steel Ni plated
Pin Header	Copper alloy , Sn plated
Housing	PBT , UL94V-0

### Electrical

Standard	UL
Rated Voltage	300V
Rated current	30A
Wire range	22-10AWG
Contact Resistance	20mΩ
Insulation resistance	500MΩ/DC500V
Withstanding voltage	AC2000V/1Min

### Other Data

Pitch/Poles [mm]/[P]	11.0/2-15
Operating temperature [°C]	-40°C~+130°C
Torque	18.35Kgf.cm/1.8Nm/15.9Lb.in

