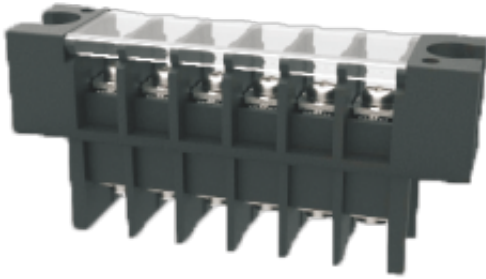


WJ10C-8.5
BARRIER TERMINAL BLOCK



Material

| | |
|------------|--------------------------|
| Screws | M3.0 Steel Ni plated |
| Pin Header | Copper alloy , Sn plated |
| Housing | PBT , UL94V-0 |

Electrical

| | |
|-----------------------|--------------|
| Standard | UL |
| Rated Voltage | 300V |
| Rated current | 20A |
| Wire range | 22-12AWG |
| Contact Resistance | 20mΩ |
| Insulation resistance | 500MΩ/DC500V |
| Withstanding voltage | AC2000V/1Min |

Other Data

| | |
|----------------------------|----------------------------|
| Pitch/Poles [mm]/[P] | 8.5/2-15 |
| Operating temperature [°C] | -40°C~+130°C |
| Torque | 10.2Kgf.cm/1.0Nm/8.85Lb.in |

Dimensions

PCB opening diagram

