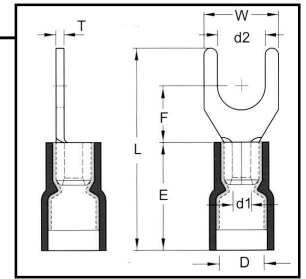


Vinyl Insulated Fork Terminals with Support Sleeve

2216 AWG Vinyl Insulated Spade Terminals with Support Sleeve

Material: Tin Plated Copper with Butted Seam
Insulation Material: Red Vinyl with Funnel Entry Copper Support Sleeve
Maximum Electrical Current: 18 Amps
Maximum Electrical Rating: 75°C, 600V
Material Thickness (T): .030

Barrel ID (d1): .067
Barrel OD (D): .165
Barrel Length (E): .413



| HOFFMAN PART NO. | STUD SIZE | DIMENSIONS (INCHES) | | | | UL | TAPE MOUNTED REEL QTY | DIE FOR TAPE MOUNTED | HAND TOOL |
|------------------|-----------|---------------------|----------------|------------------|----------|----|-----------------------|----------------------|-----------|
| | | STUD DIAMETER d2 | TONGUE WIDTH W | STUD CLEARANCE F | LENGTH L | | | | |
| FVD2216M3A | 4 | 0.126 | 0.224 | 0.256 | 0.846 | Y | 1000 | 3V2216 | YNM2210D |
| FVD2216YS3A | 6 | 0.146 | 0.252 | 0.256 | 0.846 | Y | 1000 | 3V2216 | YNM2210D |
| FVD2216S3A | 6 | 0.146 | 0.283 | 0.256 | 0.846 | Y | 1000 | 3V2216 | YNM2210D |
| FVD2216S4A | 8 | 0.169 | 0.283 | 0.256 | 0.846 | Y | 1000 | 3V2216 | YNM2210D |
| FVD2216M5A | 10 | 0.209 | 0.319 | 0.256 | 0.846 | Y | 1000 | 3V2216 | YNM2210D |
| FVD22166A | 1/4 | 0.252 | 0.472 | 0.433 | 1.083 | Y | 1000 | 3V2216 | YNM2210D |

1614 AWG Vinyl Insulated Spade Terminals with Support Sleeve

Material: Tin Plated Copper with Butted Seam
Insulation Material: Blue Vinyl with Funnel Entry Copper Support Sleeve
Maximum Electrical Current: 30 Amps
Maximum Electrical Rating: 75°C, 600V
Material Thickness (T): .031

Barrel ID (d1): .091
Barrel OD (D): .197
Barrel Length (E): .413

| HOFFMAN PART NO. | STUD SIZE | DIMENSIONS (INCHES) | | | | UL | TAPE MOUNTED REEL QT | DIE FOR TAPE MOUNTED | HAND TOOL |
|------------------|-----------|---------------------|----------------|------------------|----------|----|----------------------|----------------------|-----------|
| | | STUD DIAMETER d2 | TONGUE WIDTH W | STUD CLEARANCE F | LENGTH L | | | | |
| FVD1614YS3A | 6 | 0.146 | 0.236 | 0.256 | 0.846 | Y | 1000 | 3V1614 | YNM2210D |
| FVD1614S3A | 6 | 0.146 | 0.283 | 0.256 | 0.846 | Y | 1000 | 3V1614 | YNM2210D |
| FVD1614YS4A | 8 | 0.169 | 0.252 | 0.256 | 0.846 | Y | 1000 | 3V1614 | YNM2210D |
| FVD1614S4A | 8 | 0.169 | 0.283 | 0.256 | 0.846 | Y | 1000 | 3V1614 | YNM2210D |
| FVD16144A | 8 | 0.169 | 0.311 | 0.256 | 0.846 | Y | 1000 | 3V1614 | YNM2210D |
| FVD1614M5A | 10 | 0.209 | 0.311 | 0.256 | 0.846 | Y | 1000 | 3V1614 | YNM2210D |
| FVD16145A | 10 | 0.209 | 0.366 | 0.256 | 0.846 | Y | 1000 | 3V1614 | YNM2210D |
| FVD16146A | 1/4 | 0.252 | 0.472 | 0.433 | 1.083 | Y | 1000 | 3V1614 | YNM2210D |

