

- 1
- 2
- 3
- 4
- 5
- 6
- 7
- 8
- 9
- 10
- 11
- 12
- 13
- 14
- 15
- 16
- 17
- 18

MATERIAL

Stainless steel, sandblasted matte finish.

STANDARD EXECUTION

Hub, threaded blind hole.

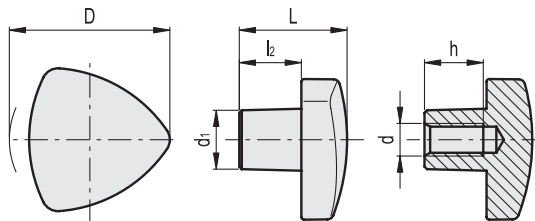
SPECIAL EXECUTIONS ON REQUEST

- Threaded pass-through hole.
- H7 reamed blind hole.
- Glossy finish.



ELESA Original design

Conversion Table	
1 mm = 0.039 inch	
D	
mm	inch
32	1.26
40	1.57
50	1.97
60	2.36



Code	Description	D	d	L	d1	l2	h	⚖
85002	VTRM-SST-32-M5	32	M5	21	12	12	10	60
85003	VTRM-SST-32-M6	32	M6	21	12	12	12	58
85012	VTRM-SST-40-M6	40	M6	26	14	14	12	94
85013	VTRM-SST-40-M8	40	M8	26	14	14	15	92
85022	VTRM-SST-50-M8	50	M8	33	18	19	15	155
85023	VTRM-SST-50-M10	50	M10	33	18	19	18	150
85032	VTRM-SST-60-M10	60	M10	41	20	23	18	245
85033	VTRM-SST-60-M12	60	M12	41	20	23	22	235

Clamping knobs