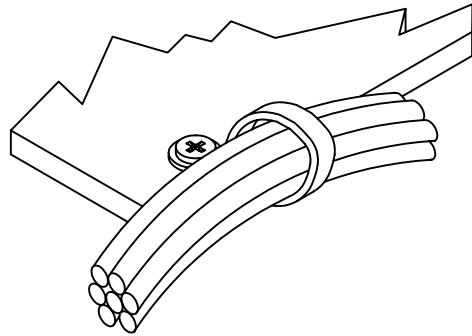
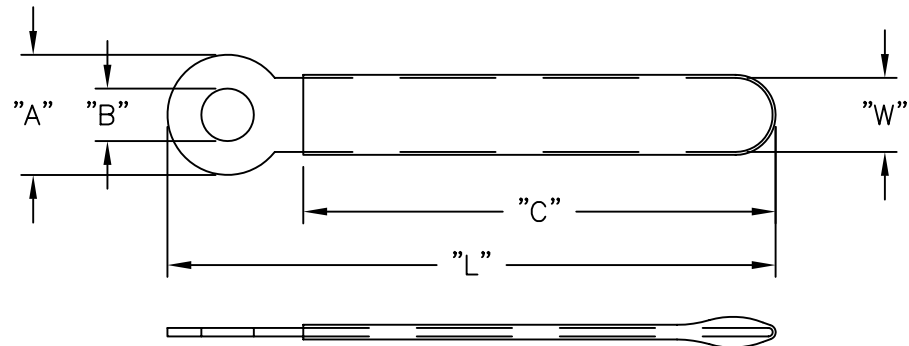


TYPICAL APPLICATION



PART NO.	"L" REF.	"C" REF.	"A"±.020 (±0.5)	"B"±.012 (±0.3)	"W" REF.
VCC-83028	1.10 (28.0)	.71 (18.0)	.315 (8.0)	.118 (3.0)	.12 (3.0)
VCC-83534	1.34 (34.0)	.94 (24.0)			.16 (4.0)
VCC-83535	1.37 (35.0)	.98 (25.0)		.20 (5.0)	
VCC-83540	1.57 (40.0)	1.18 (30.0)	.236 (6.0)	.138 (3.5)	.12 (3.0)
VCC-63048	1.89 (48.0)	1.57 (40.0)		.08 (2.0)	
VCC-84554	2.13 (54.0)	1.65 (42.0)	.315 (8.0)	*.177(4.5)	.19 (4.8)
VCC-63254	2.13 (54.0)	1.81 (46.0)	.236 (6.0)	.126 (3.2)	.14 (3.6)
VCC-83664	2.52 (64.0)	2.09 (53.0)	.315 (8.0)	*.161(4.1)	.20 (5.0)
VCC-84576	2.99 (76.0)	2.56 (65.0)		.18 (4.5)	
VCC-84584	3.31 (84.0)	2.83 (72.0)			
VCC-845126	4.96(126.0)	4.41(112.0)			.24 (6.0)



SEE NOTE 4.

NOTES:

1. BODY: SOFT STEEL, ELECTROGALVANIZED .02 (0.5) THICK.
2. COATING: PVC, SOFT, BLACK, .032 (0.8) MIN. THICKNESS.
3. UL-94 VO COATING AVAILABLE BY SPECIAL ORDER ONLY.
4. MINIMUM DRIP ALLOWED.
- *5. TOLERANCE ON THESE DIMENSIONS ±.020 (0.5)

E	ADDED 84554 REARRANGED GRAPH	DLC 2.26.02	TITLE: VINYL COATED CLAMP				DWG IN IN (MM)	
D	CORRECTED TABLE AND NOTE 4. ADDED TOLERANCES	SM 08.09.01	TOLERANCES UNLESS NOTED .XX=±.02 (X.X=±0.5) FRAC=±1/64 ANG=1°	FILE # VCC	DWN: P.B.		APP:	
C	REMOVED P/N: VCC-84554, CORRECTED NOTES & CHANGED FILE NO.	SM 03.22.01	MAT'L: SEE NOTES	RE: RICHCO, INC.	DT: 05-11-94	DT:	PART #	PRINT TYPE
B	NOTE ELECTROGALVANIZED ADDED	J.L. 4.22.98					SEE TABLE	CA
A	.18 (4.5) IN TABLE WAS .18 (4.6)	PB 112394						
REV	DESCRIPTION	ENGR DATE						