

MATERIAL

Glass-fibre reinforced polyamide based (PA) technopolymer, black colour, matte finish.

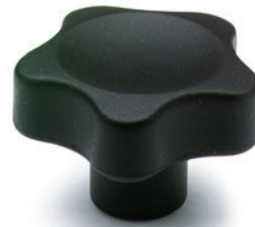
STANDARD EXECUTIONS

- **VC.692-B:** brass boss, threaded blind hole.
- **VC.692-SST:** AISI 303 stainless steel boss, threaded blind hole.
- **VC.692-p:** zinc-plated steel threaded stud, chamfered flat end according to UNI 947 : ISO 4753 (see Technical data on page A-10).
- **VC.692-SST-p:** AISI 303 stainless steel threaded stud, chamfered flat end according to UNI 947 : ISO 4753 (see Technical data on page A-10).

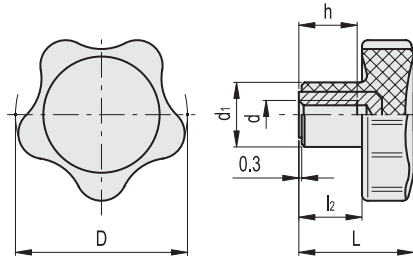
FEATURES AND APPLICATIONS

The exclusive five-lobe shape (ELESA original design) offers the operator's fingers a proper grip and prevents unhealthy residues from depositing thanks to its solid shape without cavities.

The metal insert in AISI 303 stainless steel can be used in sectors where corrosion resistant materials are required.



VC.692-B
VC.692-SST



ELESA Original design

| Conversion Table 1 mm = 0.039 inch | |
|---------------------------------------|------|
| D | |
| mm | inch |
| 25 | 0.98 |
| 32 | 1.26 |
| 40 | 1.57 |
| 50 | 1.97 |
| 60 | 2.36 |

VC.692-B

METRIC

| Code | Description | D | d6H | L | d1 | l2 | h | ⚖️ |
|--------|-----------------|----|-----|------|----|------|----|----|
| 166111 | VC.692/25 B-M4 | 25 | M4 | 20 | 12 | 10 | 10 | 7 |
| 166112 | VC.692/25 B-M5 | 25 | M5 | 20 | 12 | 10 | 10 | 7 |
| 166113 | VC.692/25 B-M6 | 25 | M6 | 20 | 12 | 10 | 10 | 7 |
| 166221 | VC.692/32 B-M5 | 32 | M5 | 22.5 | 14 | 12.5 | 10 | 15 |
| 166222 | VC.692/32 B-M6 | 32 | M6 | 22.5 | 14 | 12.5 | 10 | 14 |
| 166223 | VC.692/32 B-M8 | 32 | M8 | 22.5 | 14 | 12.5 | 10 | 13 |
| 166341 | VC.692/40 B-M6 | 40 | M6 | 26 | 15 | 14 | 12 | 25 |
| 166342 | VC.692/40 B-M8 | 40 | M8 | 26 | 15 | 14 | 13 | 23 |
| 166471 | VC.692/50 B-M8 | 50 | M8 | 31 | 18 | 17 | 15 | 44 |
| 166472 | VC.692/50 B-M10 | 50 | M10 | 31 | 18 | 17 | 17 | 40 |
| 166551 | VC.692/60 B-M10 | 60 | M10 | 36.5 | 21 | 21 | 20 | 63 |
| 166552 | VC.692/60 B-M12 | 60 | M12 | 36.5 | 21 | 21 | 20 | 54 |

VC.692-SST

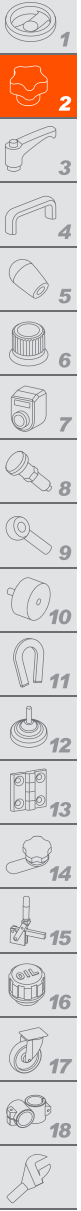
INOX
STAINLESS
STEEL

METRIC

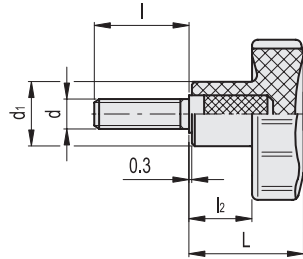
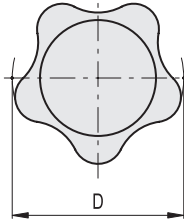
| Code | Description | D | d6H | L | d1 | l2 | h | ⚖️ |
|--------|-------------------|----|-----|------|----|------|----|----|
| 166116 | VC.692/25-SST-M5 | 25 | M5 | 20 | 12 | 10 | 10 | 7 |
| 166117 | VC.692/25-SST-M6 | 25 | M6 | 20 | 12 | 10 | 10 | 7 |
| 166225 | VC.692/32 SST-M5 | 32 | M5 | 22.5 | 14 | 12.5 | 10 | 15 |
| 166226 | VC.692/32-SST-M6 | 32 | M6 | 22.5 | 14 | 12.5 | 10 | 15 |
| 166345 | VC.692/40 SST-M6 | 40 | M6 | 26 | 15 | 14 | 12 | 26 |
| 166346 | VC.692/40-SST-M8 | 40 | M8 | 26 | 15 | 14 | 13 | 24 |
| 166475 | VC.692/50 SST-M8 | 50 | M8 | 31 | 18 | 17 | 15 | 45 |
| 166476 | VC.692/50-SST-M10 | 50 | M10 | 31 | 18 | 17 | 17 | 42 |
| 166555 | VC.692/60 SST-M10 | 60 | M10 | 36.5 | 21 | 21 | 17 | 64 |
| 166556 | VC.692/60-SST-M12 | 60 | M12 | 36.5 | 21 | 21 | 20 | 54 |



Clamping knobs



VC.692-p



| Conversion Table | |
|-------------------|------|
| 1 mm = 0.039 inch | |
| D | |
| mm | inch |
| 25 | 0.98 |
| 32 | 1.26 |
| 40 | 1.57 |
| 50 | 1.97 |
| 60 | 2.36 |

VC.692-p

METRIC

| Code | Description | D | d6g | L | d1 | l | l2 | Δ |
|--------|-------------------|----|-----|------|----|----|------|----|
| 166131 | VC.692/25 p-M4x6 | 25 | M4 | 20 | 12 | 6 | 10 | 6 |
| 166132 | VC.692/25 p-M4x10 | 25 | M4 | 20 | 12 | 10 | 10 | 7 |
| 166141 | VC.692/25 p-M5x10 | 25 | M5 | 20 | 12 | 10 | 10 | 8 |
| 166142 | VC.692/25 p-M5x16 | 25 | M5 | 20 | 12 | 16 | 10 | 9 |
| 166143 | VC.692/25 p-M5x20 | 25 | M5 | 20 | 12 | 20 | 10 | 10 |
| 166144 | VC.692/25 p-M5x25 | 25 | M5 | 20 | 12 | 25 | 10 | 11 |
| 166145 | VC.692/25 p-M5x30 | 25 | M5 | 20 | 12 | 30 | 10 | 12 |
| 166151 | VC.692/25 p-M6x10 | 25 | M6 | 20 | 12 | 10 | 10 | 10 |
| 166152 | VC.692/25 p-M6x16 | 25 | M6 | 20 | 12 | 16 | 10 | 11 |
| 166153 | VC.692/25 p-M6x20 | 25 | M6 | 20 | 12 | 20 | 10 | 12 |
| 166154 | VC.692/25 p-M6x25 | 25 | M6 | 20 | 12 | 25 | 10 | 13 |
| 166155 | VC.692/25 p-M6x30 | 25 | M6 | 20 | 12 | 30 | 10 | 14 |
| 166156 | VC.692/25 p-M6x35 | 25 | M6 | 20 | 12 | 35 | 10 | 15 |
| 166241 | VC.692/32 p-M6x10 | 32 | M6 | 22.5 | 14 | 10 | 12.5 | 14 |
| 166242 | VC.692/32 p-M6x16 | 32 | M6 | 22.5 | 14 | 16 | 12.5 | 15 |
| 166243 | VC.692/32 p-M6x20 | 32 | M6 | 22.5 | 14 | 20 | 12.5 | 16 |
| 166244 | VC.692/32 p-M6x25 | 32 | M6 | 22.5 | 14 | 25 | 12.5 | 17 |
| 166245 | VC.692/32 p-M6x30 | 32 | M6 | 22.5 | 14 | 30 | 12.5 | 19 |
| 166246 | VC.692/32 p-M6x35 | 32 | M6 | 22.5 | 14 | 35 | 12.5 | 20 |
| 166247 | VC.692/32 p-M6x40 | 32 | M6 | 22.5 | 14 | 40 | 12.5 | 22 |
| 166248 | VC.692/32 p-M6x45 | 32 | M6 | 22.5 | 14 | 45 | 12.5 | 24 |
| 166251 | VC.692/32 p-M6x60 | 32 | M6 | 22.5 | 14 | 60 | 12.5 | 30 |
| 166252 | VC.692/32 p-M8x16 | 32 | M8 | 22.5 | 14 | 16 | 12.5 | 14 |
| 166253 | VC.692/32 p-M8x20 | 32 | M8 | 22.5 | 14 | 20 | 12.5 | 16 |
| 166254 | VC.692/32 p-M8x25 | 32 | M8 | 22.5 | 14 | 25 | 12.5 | 17 |
| 166255 | VC.692/32 p-M8x30 | 32 | M8 | 22.5 | 14 | 30 | 12.5 | 18 |
| 166256 | VC.692/32 p-M8x35 | 32 | M8 | 22.5 | 14 | 35 | 12.5 | 19 |
| 166350 | VC.692/40 p-M6x10 | 40 | M6 | 26 | 15 | 10 | 14 | 14 |
| 166351 | VC.692/40 p-M6x16 | 40 | M6 | 26 | 15 | 16 | 14 | 16 |
| 166352 | VC.692/40 p-M6x20 | 40 | M6 | 26 | 15 | 20 | 14 | 17 |
| 166353 | VC.692/40 p-M6x25 | 40 | M6 | 26 | 15 | 25 | 14 | 18 |
| 166354 | VC.692/40 p-M6x30 | 40 | M6 | 26 | 15 | 30 | 14 | 19 |
| 166356 | VC.692/40 p-M6x40 | 40 | M6 | 26 | 15 | 40 | 14 | 20 |
| 166361 | VC.692/40 p-M8x16 | 40 | M8 | 26 | 15 | 16 | 14 | 23 |
| 166362 | VC.692/40 p-M8x20 | 40 | M8 | 26 | 15 | 20 | 14 | 28 |
| 166363 | VC.692/40 p-M8x25 | 40 | M8 | 26 | 15 | 25 | 14 | 29 |
| 166364 | VC.692/40 p-M8x30 | 40 | M8 | 26 | 15 | 30 | 14 | 32 |
| 166365 | VC.692/40 p-M8x35 | 40 | M8 | 26 | 15 | 35 | 14 | 33 |
| 166366 | VC.692/40 p-M8x40 | 40 | M8 | 26 | 15 | 40 | 14 | 36 |
| 166367 | VC.692/40 p-M8x50 | 40 | M8 | 26 | 15 | 50 | 14 | 38 |
| 166360 | VC.692/40 p-M8x55 | 40 | M8 | 26 | 15 | 55 | 14 | 39 |
| 166368 | VC.692/40 p-M8x60 | 40 | M8 | 26 | 15 | 60 | 14 | 40 |
| 166369 | VC.692/40 p-M8x70 | 40 | M8 | 26 | 15 | 70 | 14 | 42 |

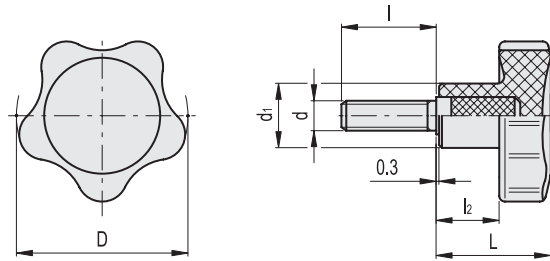
VC.692-p

METRIC

| Code | Description | D | d6g | L | d1 | l | l2 | Δ |
|--------|--------------------|----|-----|------|----|----|----|----|
| 166431 | VC.692/50 p-M8x16 | 50 | M8 | 31 | 18 | 16 | 17 | 33 |
| 166432 | VC.692/50 p-M8x20 | 50 | M8 | 31 | 18 | 20 | 17 | 35 |
| 166433 | VC.692/50 p-M8x25 | 50 | M8 | 31 | 18 | 25 | 17 | 36 |
| 166434 | VC.692/50 p-M8x30 | 50 | M8 | 31 | 18 | 30 | 17 | 38 |
| 166436 | VC.692/50 p-M8x40 | 50 | M8 | 31 | 18 | 40 | 17 | 40 |
| 166437 | VC.692/50 p-M8x45 | 50 | M8 | 31 | 18 | 45 | 17 | 42 |
| 166438 | VC.692/50 p-M8x50 | 50 | M8 | 31 | 18 | 50 | 17 | 44 |
| 166439 | VC.692/50 p-M8x60 | 50 | M8 | 31 | 18 | 60 | 17 | 46 |
| 166480 | VC.692/50 p-M10x16 | 50 | M10 | 31 | 18 | 16 | 17 | 42 |
| 166481 | VC.692/50 p-M10x20 | 50 | M10 | 31 | 18 | 20 | 17 | 47 |
| 166482 | VC.692/50 p-M10x25 | 50 | M10 | 31 | 18 | 25 | 17 | 52 |
| 166483 | VC.692/50 p-M10x30 | 50 | M10 | 31 | 18 | 30 | 17 | 57 |
| 166484 | VC.692/50 p-M10x35 | 50 | M10 | 31 | 18 | 35 | 17 | 62 |
| 166485 | VC.692/50 p-M10x40 | 50 | M10 | 31 | 18 | 40 | 17 | 66 |
| 166486 | VC.692/50 p-M10x45 | 50 | M10 | 31 | 18 | 45 | 17 | 71 |
| 166488 | VC.692/50 p-M10x55 | 50 | M10 | 31 | 18 | 55 | 17 | 76 |
| 166532 | VC.692/60 p-M10x20 | 60 | M10 | 36.5 | 21 | 20 | 21 | 55 |
| 166533 | VC.692/60 p-M10x25 | 60 | M10 | 36.5 | 21 | 25 | 21 | 57 |
| 166534 | VC.692/60 p-M10x30 | 60 | M10 | 36.5 | 21 | 30 | 21 | 59 |
| 166536 | VC.692/60 p-M10x40 | 60 | M10 | 36.5 | 21 | 40 | 21 | 62 |
| 166538 | VC.692/60 p-M10x50 | 60 | M10 | 36.5 | 21 | 50 | 21 | 65 |
| 166569 | VC.692/60 p-M12x20 | 60 | M12 | 36.5 | 21 | 20 | 21 | 65 |
| 166570 | VC.692/60 p-M12x25 | 60 | M12 | 36.5 | 21 | 25 | 21 | 67 |
| 166571 | VC.692/60 p-M12x30 | 60 | M12 | 36.5 | 21 | 30 | 21 | 69 |
| 166572 | VC.692/60 p-M12x35 | 60 | M12 | 36.5 | 21 | 35 | 21 | 74 |
| 166573 | VC.692/60 p-M12x40 | 60 | M12 | 36.5 | 21 | 40 | 21 | 80 |
| 166575 | VC.692/60 p-M12x50 | 60 | M12 | 36.5 | 21 | 50 | 21 | 91 |
| 166576 | VC.692/60 p-M12x60 | 60 | M12 | 36.5 | 21 | 60 | 21 | 93 |

| Conversion Table | |
|-------------------|------|
| 1 mm = 0.039 inch | |
| D | |
| mm | inch |
| 25 | 0.98 |
| 32 | 1.26 |
| 40 | 1.57 |
| 50 | 1.97 |
| 60 | 2.36 |

VC.692-SST-p



| VC.692-SST-p | | INOX STAINLESS STEEL | | METRIC | | | | |
|--------------|-----------------------|----------------------|-----|--------|----|----|------|----|
| Code | Description | D | d6g | L | d1 | l | l2 | Δ |
| 166157 | VC.692/25 SST-p-M4x6 | 25 | M4 | 20 | 12 | 6 | 10 | 6 |
| 166158 | VC.692/25 SST-p-M4x10 | 25 | M4 | 20 | 12 | 10 | 10 | 7 |
| 166161 | VC.692/25-SST-p-M5x10 | 25 | M5 | 20 | 12 | 10 | 10 | 8 |
| 166162 | VC.692/25-SST-p-M5x16 | 25 | M5 | 20 | 12 | 16 | 10 | 9 |
| 166163 | VC.692/25-SST-p-M5x20 | 25 | M5 | 20 | 12 | 20 | 10 | 10 |
| 166164 | VC.692/25-SST-p-M5x25 | 25 | M5 | 20 | 12 | 25 | 10 | 11 |
| 166171 | VC.692/25 SST-p-M6x10 | 25 | M6 | 20 | 12 | 10 | 10 | 10 |
| 166172 | VC.692/25 SST-p-M6x16 | 25 | M6 | 20 | 12 | 16 | 10 | 11 |
| 166173 | VC.692/25 SST-p-M6x20 | 25 | M6 | 20 | 12 | 20 | 10 | 12 |
| 166175 | VC.692/25 SST-p-M6x25 | 25 | M6 | 20 | 12 | 25 | 10 | 13 |
| 166174 | VC.692/25 SST-p-M6x30 | 25 | M6 | 20 | 12 | 30 | 10 | 14 |
| 166176 | VC.692/25 SST-p-M6x35 | 25 | M6 | 20 | 12 | 35 | 10 | 15 |
| 166261 | VC.692/32 SST-p-M6x10 | 32 | M6 | 22.5 | 14 | 10 | 12.5 | 17 |
| 166262 | VC.692/32-SST-p-M6x16 | 32 | M6 | 22.5 | 14 | 16 | 12.5 | 15 |
| 166263 | VC.692/32-SST-p-M6x20 | 32 | M6 | 22.5 | 14 | 20 | 12.5 | 16 |
| 166264 | VC.692/32-SST-p-M6x30 | 32 | M6 | 22.5 | 14 | 30 | 12.5 | 19 |
| 166266 | VC.692/32-SST-p-M6x35 | 32 | M6 | 22.5 | 14 | 35 | 12.5 | 20 |
| 166272 | VC.692/32-SST-p-M8x16 | 32 | M8 | 22.5 | 14 | 16 | 12.5 | 19 |
| 166273 | VC.692/32-SST-p-M8x20 | 32 | M8 | 22.5 | 14 | 20 | 12.5 | 20 |
| 166274 | VC.692/32-SST-p-M8x25 | 32 | M8 | 22.5 | 14 | 25 | 12.5 | 21 |
| 166275 | VC.692/32-SST-p-M8x30 | 32 | M8 | 22.5 | 14 | 30 | 12.5 | 22 |
| 166277 | VC.692/32-SST-p-M8x40 | 32 | M8 | 22.5 | 14 | 40 | 12.5 | 23 |
| 166370 | VC.692/40-SST-p-M6x10 | 40 | M6 | 26 | 15 | 10 | 14 | 20 |
| 166372 | VC.692/40 SST-p-M6x20 | 40 | M6 | 26 | 15 | 20 | 14 | 25 |
| 166374 | VC.692/40 SST-p-M6x30 | 40 | M6 | 26 | 15 | 30 | 14 | 27 |
| 166376 | VC.692/40 SST-p-M6x40 | 40 | M6 | 26 | 15 | 40 | 14 | 31 |
| 166379 | VC.692/40 SST-p-M8x16 | 40 | M8 | 26 | 15 | 16 | 14 | 26 |
| 166381 | VC.692/40-SST-p-M8x20 | 40 | M8 | 26 | 15 | 20 | 14 | 28 |
| 166382 | VC.692/40-SST-p-M8x25 | 40 | M8 | 26 | 15 | 25 | 14 | 30 |
| 166383 | VC.692/40-SST-p-M8x30 | 40 | M8 | 26 | 15 | 30 | 14 | 32 |
| 166384 | VC.692/40-SST-p-M8x35 | 40 | M8 | 26 | 15 | 35 | 14 | 34 |
| 166385 | VC.692/40-SST-p-M8x40 | 40 | M8 | 26 | 15 | 40 | 14 | 36 |
| 166386 | VC.692/40-SST-p-M8x45 | 40 | M8 | 26 | 15 | 45 | 14 | 38 |

| VC.692-SST-p | | INOX STAINLESS STEEL | | METRIC | | | | |
|--------------|------------------------|----------------------|-----|--------|----|----|----|----|
| Code | Description | D | d6g | L | d1 | l | l2 | Δ |
| 166451 | VC.692/50-SST-p-M8x16 | 50 | M8 | 31 | 18 | 16 | 17 | 38 |
| 166452 | VC.692/50-SST-p-M8x20 | 50 | M8 | 31 | 18 | 20 | 17 | 40 |
| 166453 | VC.692/50-SST-p-M8x25 | 50 | M8 | 31 | 18 | 25 | 17 | 41 |
| 166454 | VC.692/50-SST-p-M8x30 | 50 | M8 | 31 | 18 | 30 | 17 | 42 |
| 166455 | VC.692/50-SST-p-M8x35 | 50 | M8 | 31 | 18 | 35 | 17 | 43 |
| 166456 | VC.692/50-SST-p-M8x40 | 50 | M8 | 31 | 18 | 40 | 17 | 45 |
| 166457 | VC.692/50-SST-p-M8x50 | 50 | M8 | 31 | 18 | 50 | 17 | 46 |
| 166491 | VC.692/50-SST-p-M10x20 | 50 | M10 | 31 | 18 | 20 | 17 | 47 |
| 166492 | VC.692/50-SST-p-M10x25 | 50 | M10 | 31 | 18 | 25 | 17 | 51 |
| 166493 | VC.692/50-SST-p-M10x30 | 50 | M10 | 31 | 18 | 30 | 17 | 55 |
| 166495 | VC.692/50-SST-p-M10x40 | 50 | M10 | 31 | 18 | 40 | 17 | 59 |
| 166497 | VC.692/50-SST-p-M10x45 | 50 | M10 | 31 | 18 | 45 | 17 | 63 |
| 166496 | VC.692/50-SST-p-M10x50 | 50 | M10 | 31 | 18 | 50 | 17 | 67 |
| 166498 | VC.692/50-SST-p-M10x55 | 50 | M10 | 31 | 18 | 55 | 17 | 71 |
| 166562 | VC.692/60-SST-p-M10x20 | 60 | M10 | 36.5 | 21 | 20 | 21 | 70 |
| 166564 | VC.692/60-SST-p-M10x30 | 60 | M10 | 36.5 | 21 | 30 | 21 | 71 |
| 166566 | VC.692/60-SST-p-M10x40 | 60 | M10 | 36.5 | 21 | 40 | 21 | 73 |
| 166568 | VC.692/60-SST-p-M10x50 | 60 | M10 | 36.5 | 21 | 50 | 21 | 75 |
| 166591 | VC.692/60-SST-p-M12x30 | 60 | M12 | 36.5 | 21 | 30 | 21 | 70 |
| 166593 | VC.692/60-SST-p-M12x40 | 60 | M12 | 36.5 | 21 | 40 | 21 | 81 |
| 166595 | VC.692/60-SST-p-M12x50 | 60 | M12 | 36.5 | 21 | 50 | 21 | 92 |

