

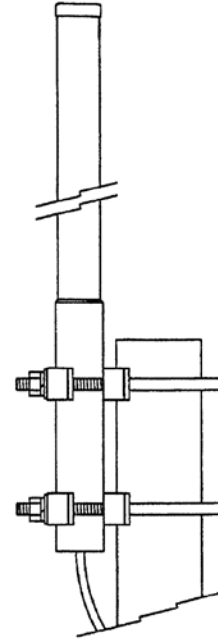


ANTENNA TECHNOLOGIES LIMITED COMPANY

Model V161WB Omnidirectional Antenna

Key Features

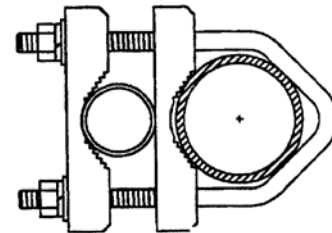
- ✓ Very Wide Band, no field tuning required
- ✓ Encased in a heavy wall fiberglass radome for superior weather resistance
- ✓ Flexible feedline with UHF Female termination simplifies the final installation
- ✓ Custom stainless-steel V-Blocks for easy and secure mounting to a wide range of mast diameters
- ✓ Individually factory tested



Electrical Specifications	V161WB
Frequency Range, MHz	148-174
Polarization	Vertical
Gain, dBi	Unity
VSWR (50 Ohms)	1.2:1 typical
1.5:1 Bandwidth MHz	26 minimum
3 dB Beamwidth E/H Planes, degrees	90/360
Maximum Power, watts	150*
Termination, feet (m), coax	UHF Female, 1 (.3), RG58 type

*Limited by feedline. Higher power ratings are available as an option.

TOP VIEW



Mechanical Specifications	V161WB
Overall Length, feet (m)	5 (1.5)
Radome Material	1.0"OD; .125" wall Fiberglass
Element Material	All-brass components
Mast Diameter, inches, (cm)	1.25-2.00 (3.2-5.1)
Mounting	Supplied
Wind Surface Areas, feet	.37 (.03)
Wind Survival, mph (kph)	125 (200)
Weight, pounds (kg)	4.0 (1.8)