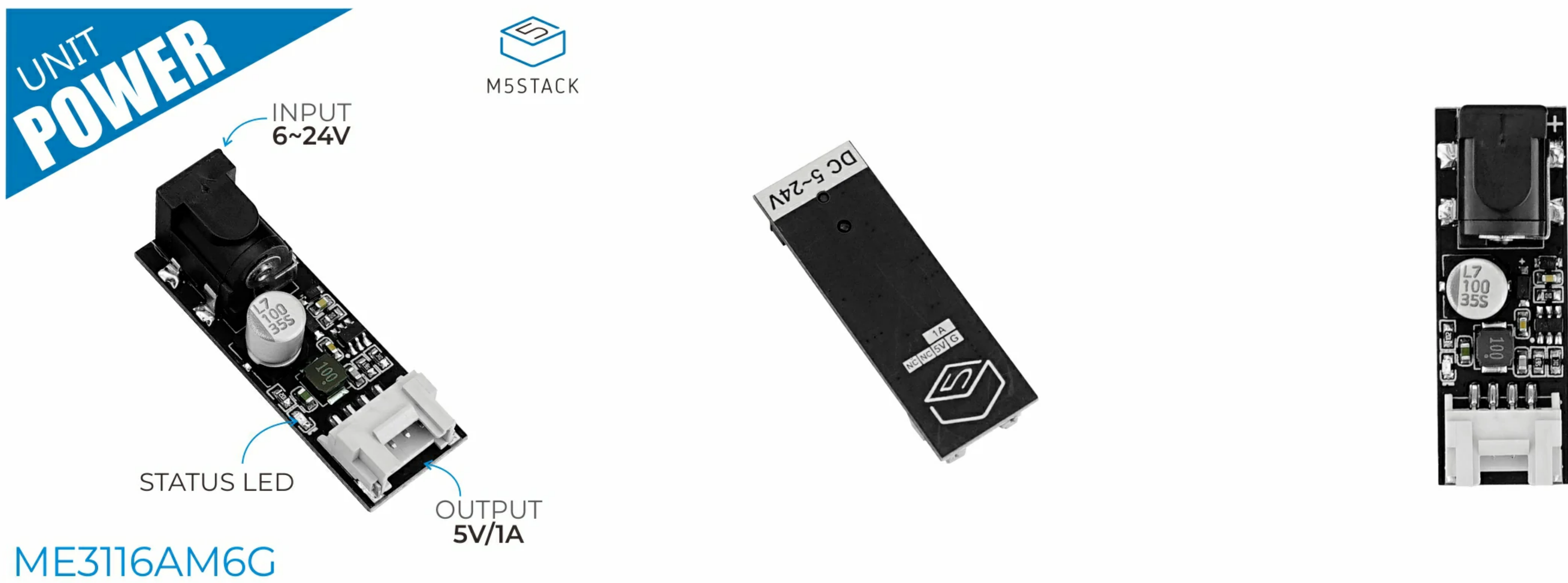


UNIT POWER

SKU:U125



Description

UNIT POWER is a DC Power Supply Unit with built-in DCDC step-down chip ME3116AM6G, supporting DC **6-24V** -> **5V** output. The input side is a standard DC-015 Circular interface that can be directly connected to common DC power adapters, and the 5V output side is a Grove interface, which is more convenient to connect to devices and easy to operate, this product is suitable for various DC 5V embedded devices load power supply.

Product Features

- ME3116AM6G
- DC-DC conversion circuit
- DC 6-24V wide voltage input
- Output capacity: 5V/1A
- With power indicator
- Plug-and-play
- Grove Interface

Included

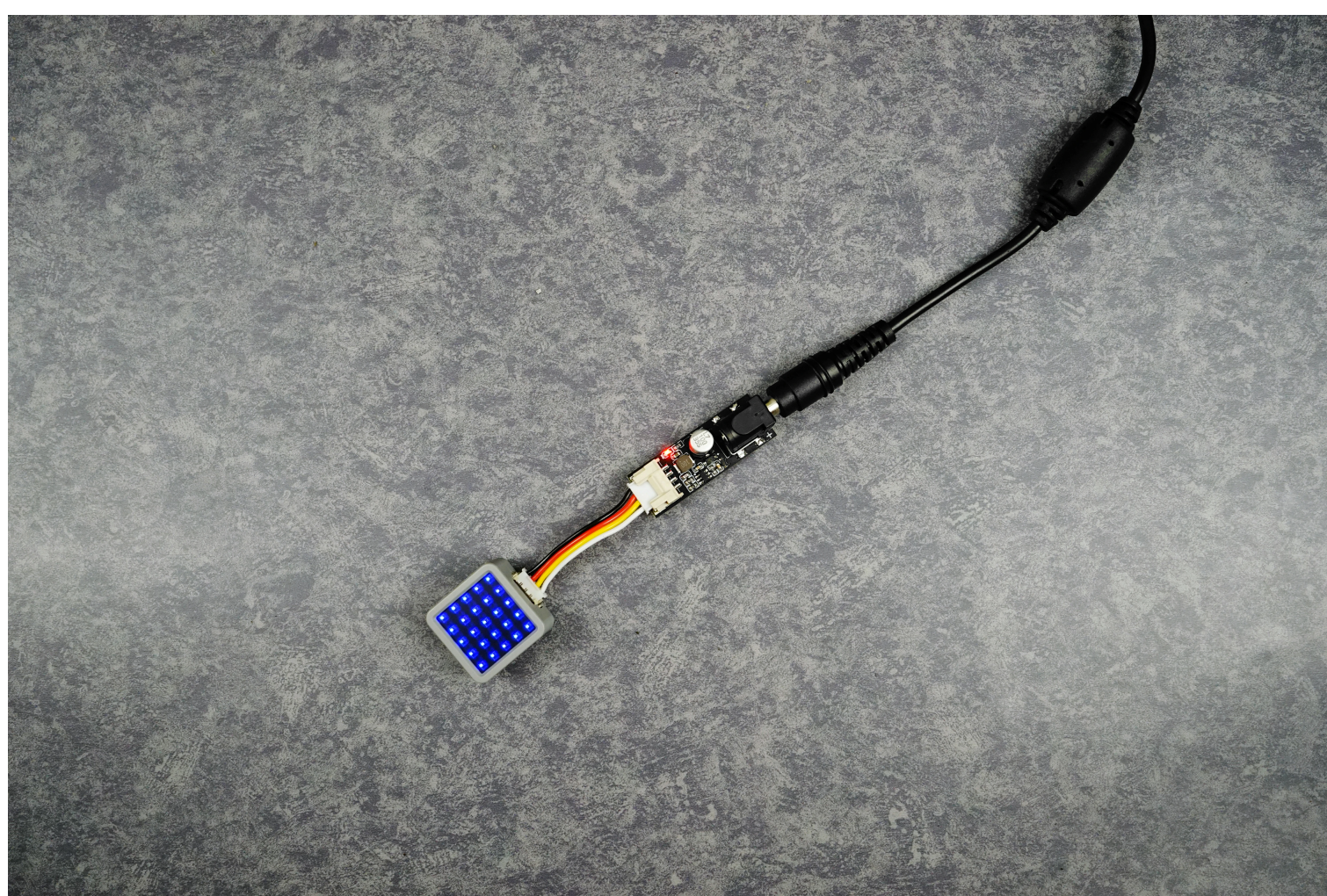
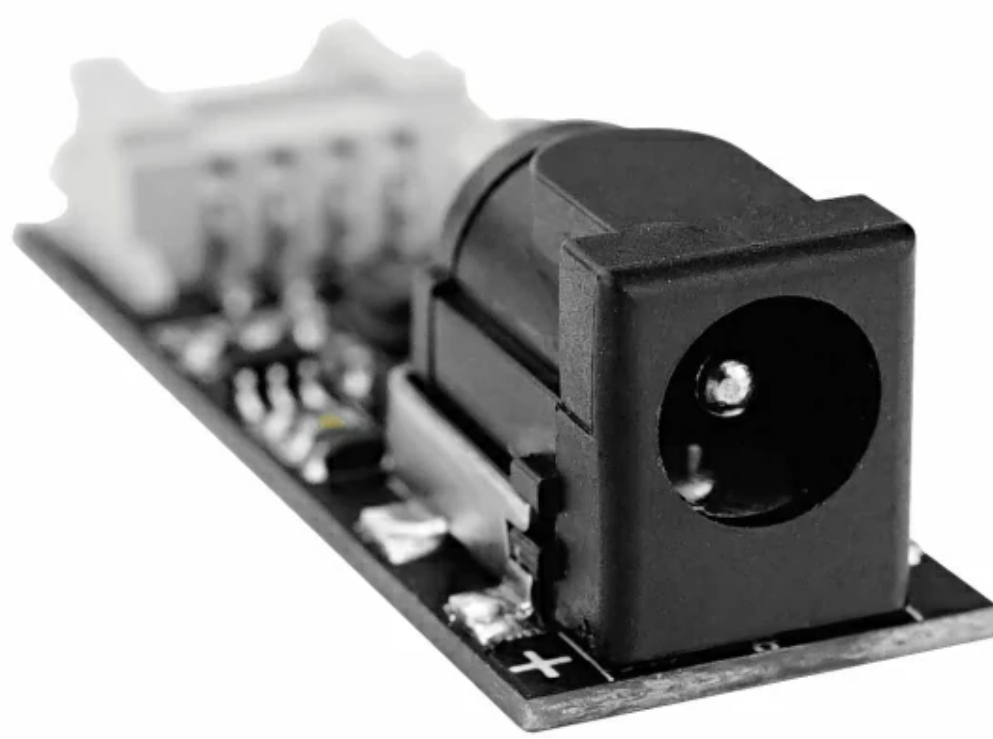
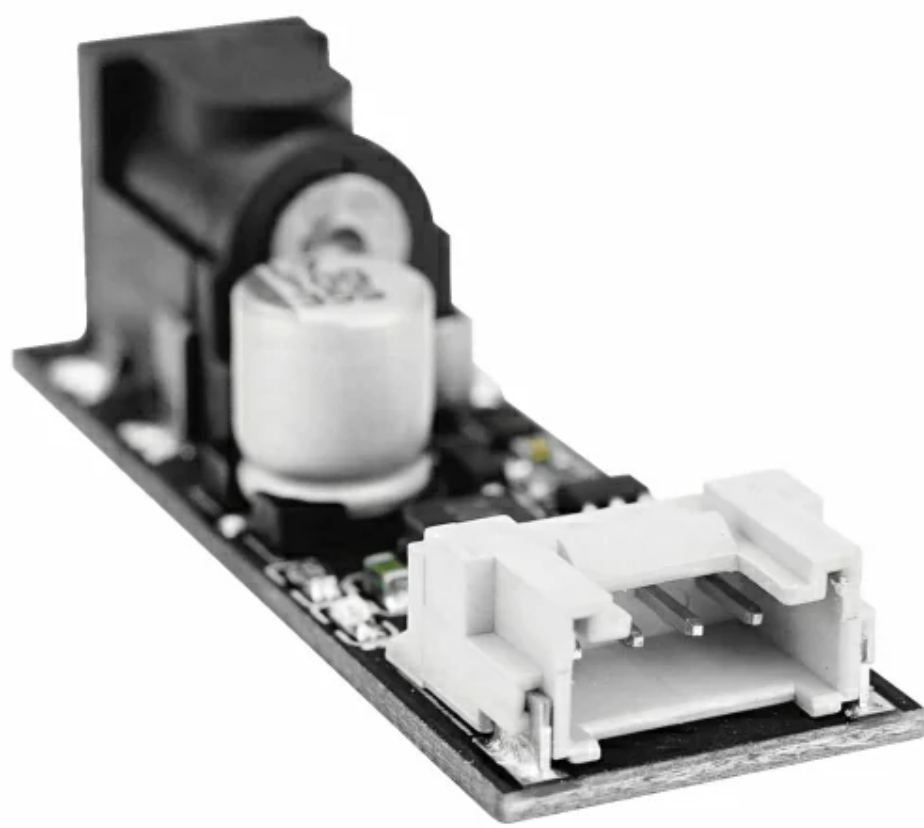
- 1x UNIT POWER

Applications

- DC 5V device power supply

Specifications

Specifications	Parameters
Step-Down Chip	ME3116AM6G
Output Capacity	5V/1A
DC 12V Input Connector Specifications	DC-015
DC 5V Output Connector Specifications	HY2.0-4P
Power Indicator	Red
Net Weight	4.4g
Gross Weight	5.1g



Related Links

◦ [Datasheet](#)

◦ [ME3116AM6G](#)

Schematic

