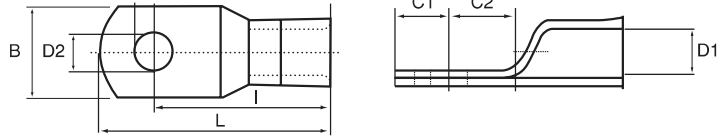


UL Certified, Non-Plated Tubular Lugs

Lever tool for crimping tubular lugs #115



HOFFMAN PART NO.	WIRE SIZE AWG	STUD SIZE (INCH)	DIMENSIONS (INCHES)							UL
			D1	D2	B	C1	C2	I	L	
1700	8	10	0.185	0.196	0.445	0.235	0.344	0.965	1.200	Y
1701	8	1/4	0.185	0.265	0.445	0.235	0.344	0.965	1.200	Y
1702	8	5/16	0.185	0.328	0.445	0.235	0.406	0.965	1.200	Y
1600	6	10	0.232	0.196	0.445	0.235	0.344	1.175	1.410	Y
1601	6	1/4	0.232	0.265	0.445	0.235	0.344	1.175	1.410	Y
1602	6	5/16	0.232	0.328	0.445	0.235	0.406	1.175	1.410	Y
1603	6	3/8	0.232	0.390	0.765	0.395	0.406	1.155	1.550	Y
1590	4	10	0.286	0.196	0.525	0.275	0.406	1.225	1.500	Y
1591	4	1/4	0.286	0.265	0.525	0.275	0.406	1.225	1.500	Y
1592	4	5/16	0.286	0.328	0.525	0.275	0.406	1.225	1.500	Y
1593	4	3/8	0.286	0.390	0.525	0.275	0.406	1.225	1.500	Y
1580	2	1/4	0.336	0.265	0.615	0.325	0.406	1.295	1.620	Y
1581	2	5/16	0.336	0.328	0.615	0.325	0.406	1.295	1.620	Y
1582	2	3/8	0.336	0.390	0.615	0.325	0.406	1.295	1.620	Y
1583	2	1/2	0.336	0.515	0.755	0.395	0.406	1.355	1.750	Y
1560	1	1/4	0.360	0.265	0.655	0.335	0.406	1.385	1.720	Y
1561	1	5/16	0.360	0.328	0.655	0.335	0.406	1.385	1.720	Y
1562	1	3/8	0.360	0.390	0.655	0.335	0.406	1.385	1.720	Y
1563	1	1/2	0.360	0.515	0.655	0.335	0.468	1.385	1.720	Y
1550	1/0	1/4	0.407	0.265	0.725	0.385	0.406	1.445	1.830	Y
1551	1/0	5/16	0.407	0.328	0.725	0.385	0.406	1.445	1.830	Y
1552	1/0	3/8	0.407	0.390	0.725	0.385	0.406	1.445	1.830	Y
1553	1/0	1/2	0.407	0.515	0.725	0.385	0.406	1.445	1.830	Y
1540	2/0	1/4	0.461	0.265	0.815	0.425	0.500	1.635	2.060	Y
1541	2/0	5/16	0.461	0.328	0.815	0.425	0.500	1.635	2.060	Y
1542	2/0	3/8	0.461	0.390	0.815	0.425	0.500	1.635	2.060	Y
1543	2/0	1/2	0.461	0.515	0.815	0.425	0.500	1.635	2.060	Y
1530	3/0	1/4	0.511	0.265	0.895	0.465	0.500	1.695	2.160	Y
1531	3/0	5/16	0.511	0.328	0.895	0.465	0.500	1.695	2.160	Y
1532	3/0	3/8	0.511	0.390	0.895	0.465	0.500	1.695	2.160	Y
1533	3/0	1/2	0.511	0.515	0.895	0.465	0.500	1.695	2.160	Y
1521	4/0	5/16	0.559	0.328	0.985	0.505	0.546	1.845	2.350	Y
1522	4/0	3/8	0.559	0.390	0.985	0.505	0.546	1.845	2.350	Y
1523	4/0	1/2	0.559	0.515	0.985	0.505	0.546	1.845	2.350	Y

For tin plated add **T** at the end of the part number, **1521T**