

PANEL MOUNT CMB SERIES

MINI / PANEL MOUNT TERMINALS

PANEL MOUNT SCREW TERMINAL BLOCKS

HIGHLIGHTS

FEATURES

- Extremely Compact Size
- Screw Cage Clamp
- Panel Mountable with any length M3 screw
- End / Mounting Section with M3 mounting holes
- Stackable design for flexible length configurations
- Modular snap-together design for quick assembly and installation
- Endplates with mounting holes
- Internal Jumper possibility
- EX / IECEx approved
- Pre-assembled Blocks available in all pole configurations and various colors

APPLICATIONS

- Cost Effective Wiring Solutions
- Compact Wiring Solutions
- Panel Mount Designs
- High Density Wiring

CMB4



2 Connection Feed Through

Dimensions & Weight

| | |
|------------------|-------|
| Width | 6 mm |
| Length | 27 mm |
| Height | 28 mm |
| Weight per piece | 5.5 g |

Technical Data/Ratings

| | |
|------------------------------|---------------------------------|
| Approvals | |
| Wire Size (solid / stranded) | 22-10 AWG 0.2-4 mm ² |
| Voltage Rating | 300 V 500 V AC/DC |
| Current Rating | 35 A 32 A |
| Torque | 7 lb-in 0.5 Nm |
| Insulation Material | Polyamide 66 |

Installation Instructions

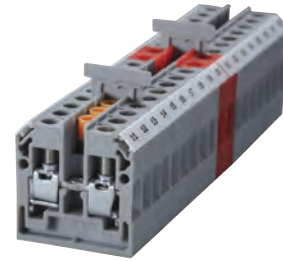
| | |
|-----------------------|---------------------------------|
| Wire Stripping Length | 8 mm |
| Screwdriver | Flat Head 0.6 x 3.5mm |
| Mounting Screw | Any length M3 screw may be used |

Terminal Blocks

| | Cat. No. | Std. Pk. |
|------------------------|-------------|----------|
| Grey (standard) | CMB4 | 100 |
| Red R | CMB4/R | 100 |
| Blue BU | CMB4/BU | 100 |
| Black BL | CMB4/BL | 100 |
| Orange O | CMB4/O | 100 |
| Green G | CMB4/G | 100 |
| Yellow Y | CMB4/Y | 100 |
| White W | CMB4/W | 100 |

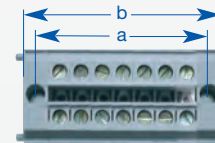
Accessories

| | Cat. No. | Std. Pk. |
|---------------------------|-------------------------------------------|-------------------------|
| End / Mounting Section | EPCMB4 | 50 |
| Separator Plate | SPCMB4 | 50 |
| Internal Jumper | CA727/2 CA727/3 CA727/4 CA727/10 | 100 100 100 10 |
| Insulated Internal Jumper | CA747/2 CA747/3 CA747/4 CA747/10 | 100 100 100 10 |
| External Jumper | CA714/2 CA714/3 CA714/4 CA714/10 | 100 100 100 20 |
| Test Socket | CA707/TS/O1 | 100 |
| Marking Tag | MT2 | 1 Pk. (100 tags) |

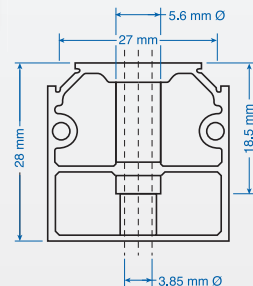


Pre-assembled Terminal Blocks

| No. of Poles | Cat. No | Total Width (a) | Hole Spacing (b) |
|--------------|---------|-----------------|------------------|
| 2 | CMB4/2 | 26 mm (1.02") | 19 mm (0.75") |
| 3 | CMB4/3 | 32 mm (1.26") | 25 mm (0.98") |
| 4 | CMB4/4 | 38 mm (1.50") | 31 mm (1.22") |
| 5 | CMB4/5 | 44 mm (1.73") | 37 mm (1.46") |
| 6 | CMB4/6 | 50 mm (1.97") | 43 mm (1.69") |
| 7 | CMB4/7 | 56 mm (2.20") | 49 mm (1.93") |
| 8 | CMB4/8 | 62 mm (2.44") | 55 mm (2.17") |
| 9 | CMB4/9 | 68 mm (2.68") | 61 mm (2.40") |
| 10 | CMB4/10 | 74 mm (2.91") | 67 mm (2.64") |
| 11 | CMB4/11 | 80 mm (3.15") | 73 mm (2.87") |
| 12 | CMB4/12 | 86 mm (3.39") | 79 mm (3.11") |
| 13 | CMB4/13 | 92 mm (3.62") | 85 mm (3.35") |
| 14 | CMB4/14 | 98 mm (3.86") | 91 mm (3.58") |
| 15 | CMB4/15 | 104 mm (4.09") | 97 mm (3.82") |
| 16 | CMB4/16 | 110 mm (4.33") | 103 mm (4.06") |
| 17 | CMB4/17 | 116 mm (4.57") | 109 mm (4.29") |
| 18 | CMB4/18 | 122 mm (4.80") | 115 mm (4.53") |
| 19 | CMB4/19 | 128 mm (5.04") | 121 mm (4.76") |
| 20 | CMB4/20 | 134 mm (5.28") | 127 mm (5.00") |
| 21 | CMB4/21 | 140 mm (5.51") | 133 mm (5.24") |
| 22 | CMB4/22 | 146 mm (5.75") | 139 mm (5.47") |
| 23 | CMB4/23 | 152 mm (5.98") | 145 mm (5.71") |
| 24 | CMB4/24 | 158 mm (6.22") | 151 mm (5.94") |



Dimensions CMB4



Mounting Section Dimensions EPCMB4

4 Pole Internal Jumper CA727/4

CMB4 Terminal Block

End / Mounting Section EPCMB4