




**SPECIFICATION SHEET**

<b>SPECIFICATION SHEET NO.</b>	N0729-TO220ABMBRF200
<b>DATE</b>	July 29, 2021
<b>REVISION</b>	A0
<b>DESCRIPTION</b>	Thru Hole Schottky Barrier Rectifier, TO-220AB Series, MBRF20200CT Type, 3 Pins, Reverse Voltage 200V Max. Forward Current 20.0A Max. Operating Temp. Range -55°C ~+150°C, Package in Bulk, 1000pcs/Box RoHS/RoHS III compliant
<b>CUSTOMER</b>	
<b>CUSTOMER PART NUMBER</b>	
<b>CROSS REF. PART NUMBER</b>	
<b>ORIGINAL PART NUMBER</b>	MDD MBRF20200CT
<b>PART CODE</b>	TO220ABMBRF200

<b>VENDOR APPROVE</b>			
Issued/Checked/Approved			
DATE: July 29, 2021			

<b>CUSTOMER APPROVE</b>	
DATE:	

**THRU HOLE SCHOTTKY BARRIER RECTIFIER TO-220AB SERIES**

**MAIN FEATURE**



- The plastic package carries Underwriters Laboratory Flammability Classification 94V-0
- Construction utilizes void-free
- Low reverse leakage
- High forward surge current capability
- High temperature soldering guaranteed: 250 °C, 0.25” (6.35mm) from case for 10 seconds

**APPLICATION**

- For printed circuit board

**RFQ**

[Request For Quotation](#)

**PART CODE GUIDE**

TO220AB	MBMRF200
1	2

1) **TO220AB**: Thru hole Schottky Barrier Rectifier, TO-220AB Series code

2) **MBMFRF200**: Type Code for original part number MBRF20200CT, Reverse Voltage 200V Max. Forward Current 20.0A Max.

**MORE ITEMS AVAILABLE**

TO220ABMBRF020	TO220ABMBRF030	TO220ABMBRF040	TO220ABMBRF045	TO220ABMBRF050
TO220ABMBRF060	TO220ABMBRF070	TO220ABMBRF080	TO220ABMBRF090	TO220ABMBRF100
TO220ABMBRF150	<b>TO220ABMBRF200</b>			

**THRU HOLE SCHOTTKY BARRIER RECTIFIER TO-220AB SERIES**

**DIMENSION (Unit: Inch/mm)**

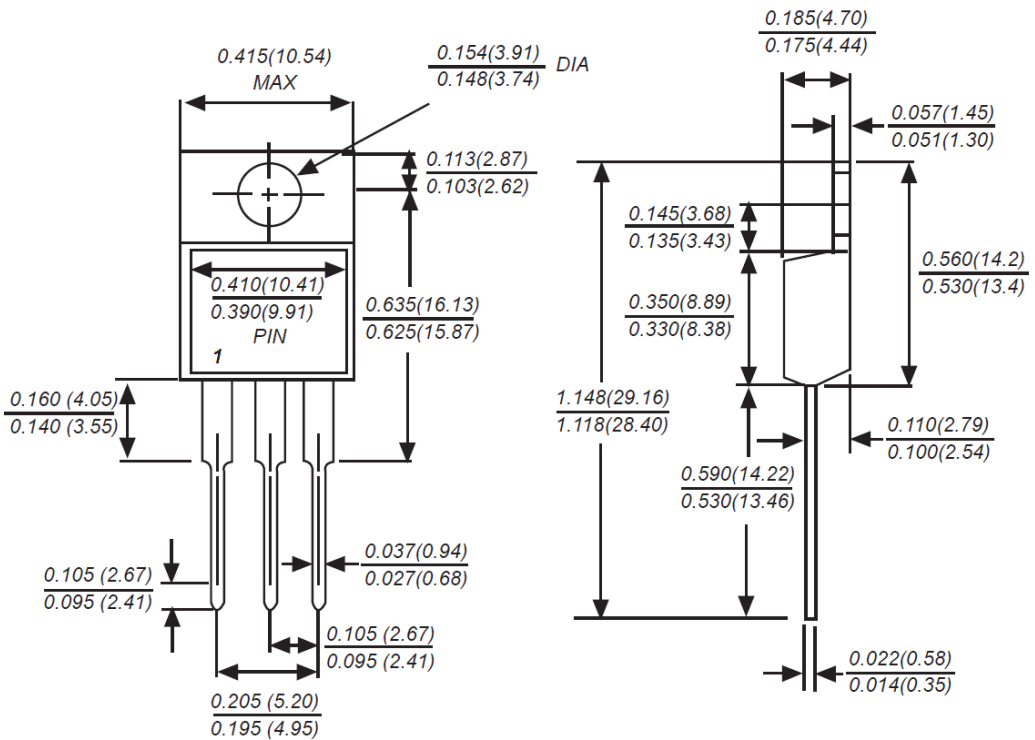
Image for reference



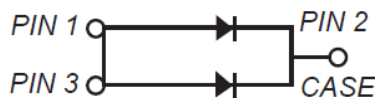
**Marking:**

MBRF  
20200CT

**TO-220AB**



**Recommend Pad Layout**



**THRU HOLE SCHOTTKY BARRIER RECTIFIER TO-220AB SERIES**
**MECHANICAL DATA**

Case	Terminals	Polarity	Mounting Position	Weight per piece
JEDEC TO-220AB molded plastic body	Solder plated, Solderable per MIL-STD-750, Method 2026	Polarity symbol marking on case	Any	0.080 Ounce, 2.24 grams

**MAX. RATING & CHARACTERISTICS**

Parameter	SYMBOLS	VALUE			UNITS
		Min.	Typical	Max.	
Repetitive peak reverse voltage	V <sub>RRM</sub>			200	Volts
RMS voltage	V <sub>RMS</sub>			140	Volts
DC blocking voltage	V <sub>DC</sub>			200	Volts
Average forward output rectified current at TL= 110°C	I <sub>AV</sub>			20.0	A
Peak forward surge current 8.3ms single half sine-wave superimposed on rated load (JEDEC Method)	I <sub>FSM</sub>		150		A
Instantaneous forward voltage at 15.0A	V <sub>F</sub>			0.95	Volts
DC reverse current at rated DC blocking voltage	I <sub>R</sub>			0.2	mA
				50.0	
Junction capacitance (Note 2)	C <sub>J</sub>		n/a		pF
Thermal resistance (Note 3)	R <sub>QJA</sub>		1.5		°C/W
Operating junction temperature range	T <sub>J</sub>	-55		+150	°C
Storage temperature range	T <sub>STG</sub>	-55		+150	°C

**Note**

- Ratings at 25 C ambient temperature unless otherwise specified. Single phase half-wave 60Hz, resistive or inductive load, for capacitive load current derate by 20%.
- Measured at 1.0MHz and applied reverse voltage of 4.0Voltage
- Thermal resistance from junction to case

**THRU HOLE SCHOTTKY BARRIER RECTIFIER TO-220AB SERIES**

**RELIABILITY**

Number	Experiment Items	Experiment Method And Conditions	Reference Documents
1	Solder Resistance Test	Test 260°C± 5°C for 10 ± 2 sec. Immerse body into solder 1/16" ± 1/32"	MIL-STD-750D METHOD-2031.2
2	Solderability Test	230°C ±5°C for 5 sec.	MIL-STD-750D METHOD-2026.1 0
3	Pull Test	1 kg in axial lead direction for 10 sec.	MIL-STD-750D METHOD-2036.4
4	Bend Test	0.5Kg Weight Applied To Each Lead, Bending Arcs 90 °C ± 5 °C For 3 Times	MIL-STD-750D METHOD-2036.4
5	High Temperature Reverse Bias Test	TA=100°C for 1000 Hours at VR=80% Rated VR	MIL-STD-750D METHOD-1038.4
6	Forward Operation Life Test	TA=25°C Rated Average Rectified Current	MIL-STD-750D METHOD-1027.3
7	Intermittent Operation Life Test	On state: 5 min with rated IRMS Power Off state: 5 min with Cool Forced Air. On and off for 1000 cycles.	MIL-STD-750D METHOD-1036.3
8	Pressure Cooker Test	15 PSIG, TA=121°C, 4 hours	MIL-S-19500 APPENOIXC
9	Temperature Cycling Test	-55°C~+125°C; 30 Minutes For Dwelled Time 5 minutes for transferred time. Total: 10 cycles.	MIL-STD-750D METHOD-1051.7
10	Thermal Shock Test	0°C for 5 minutes., 100°C for 5minutes, Total: 10 cycles	MIL-STD-750D METHOD-1056.7
11	Forward Surge Test	8.3ms Single Sale Sine-wave One Surge.	MIL-STD-750D METHOD-4066.4
12	Humidity Test	TA=65°C, RH=98% for 1000 hours.	MIL-STD-750D METHOD-1021.3
13	High Temperature Storage life Test	150°C for 1000 Hours	MIL-STD-750D METHOD-1031.5

**THRU HOLE SCHOTTKY BARRIER RECTIFIER TO-220AB SERIES**

**RATINGS AND CHARACTERISTIC CURVES (For Reference Only)**

FIG.1 TYPICAL FORWARD CHARACTERISTICS

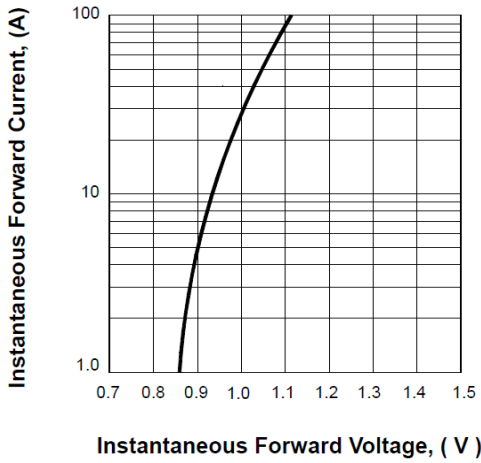


FIG.2 FORWARD DERATING CURVE

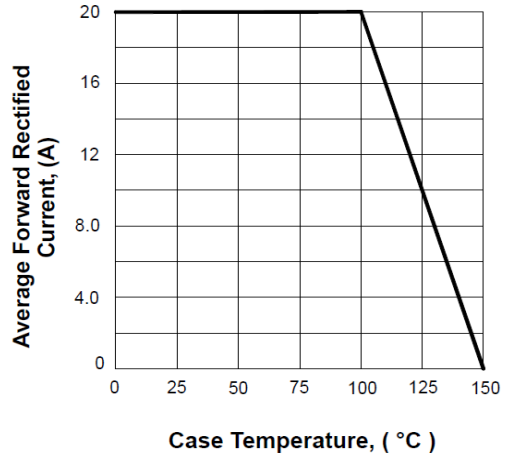


FIG.3 TYPICAL REVERSE CHARACTERISTICS

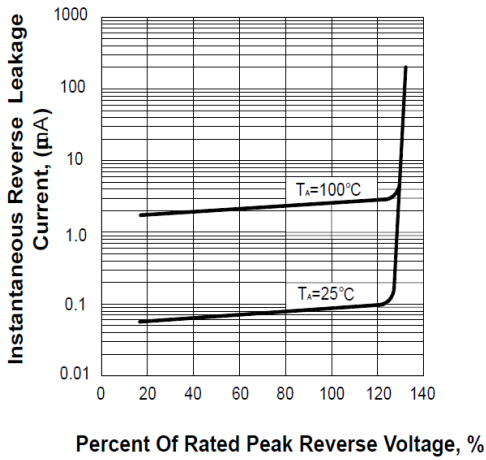
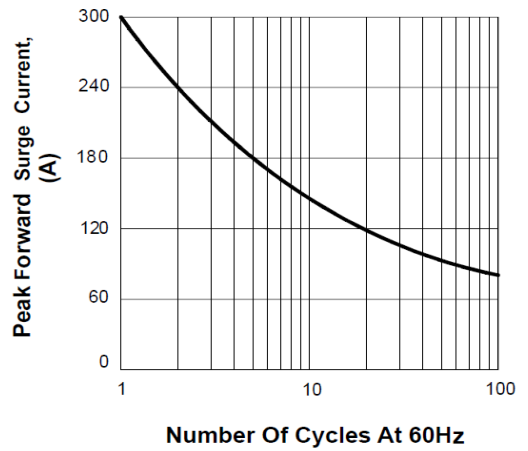


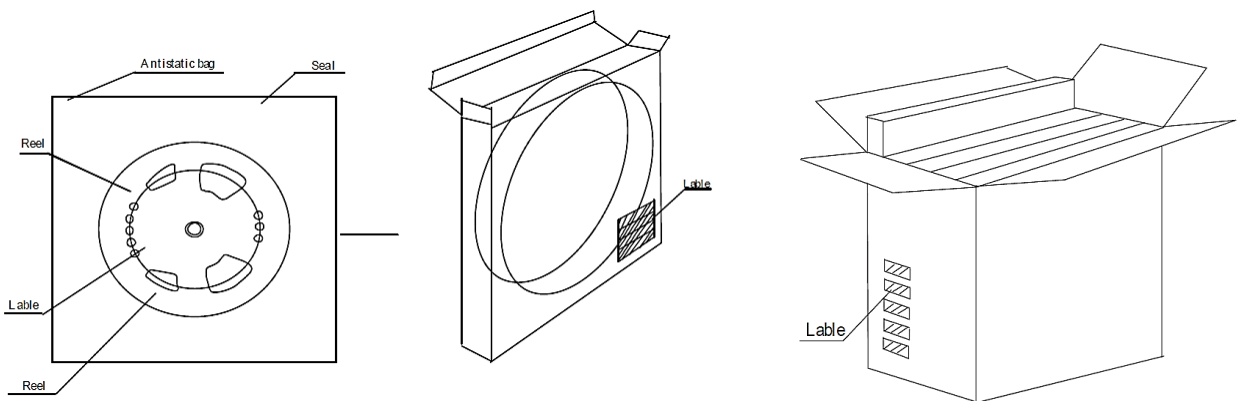
FIG. 4 - MAXIMUM NON-REPETITIVE PEAK FORWARD SURGE CURRENT



**THRU HOLE SCHOTTKY BARRIER RECTIFIER TO-220AB SERIES**

**PACKAGE**

Case Code	Box	MPQ (pcs)	Component Spacing (mm)	Qty. Per Box (pcs)	Inner Box L*W*H (mm)	Reel Size (mm)	Carton size L*W*H (mm)	Qty. Per Carton (pcs)	G. W (kg)
TO-220AB		1,000		1,000	560*155*40	2.65	580*220*180	5,000	14.0



**DISCLAIMER**

NextGen Component, Inc. reserves the right to make changes to the product(s) and or information contained herein without notice. No liability is assumed as a result of their use or application. No rights under any patent accompany the sale of any such product(s) or information