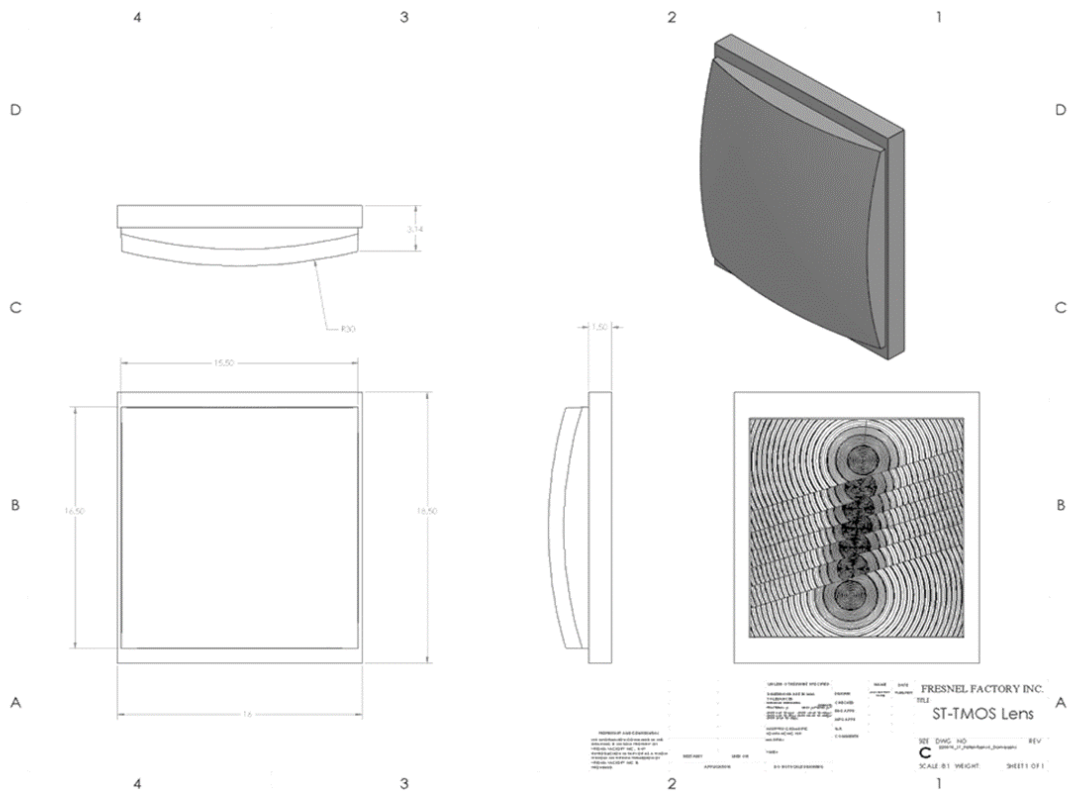


TMOS10-12030 for TMOS EVK

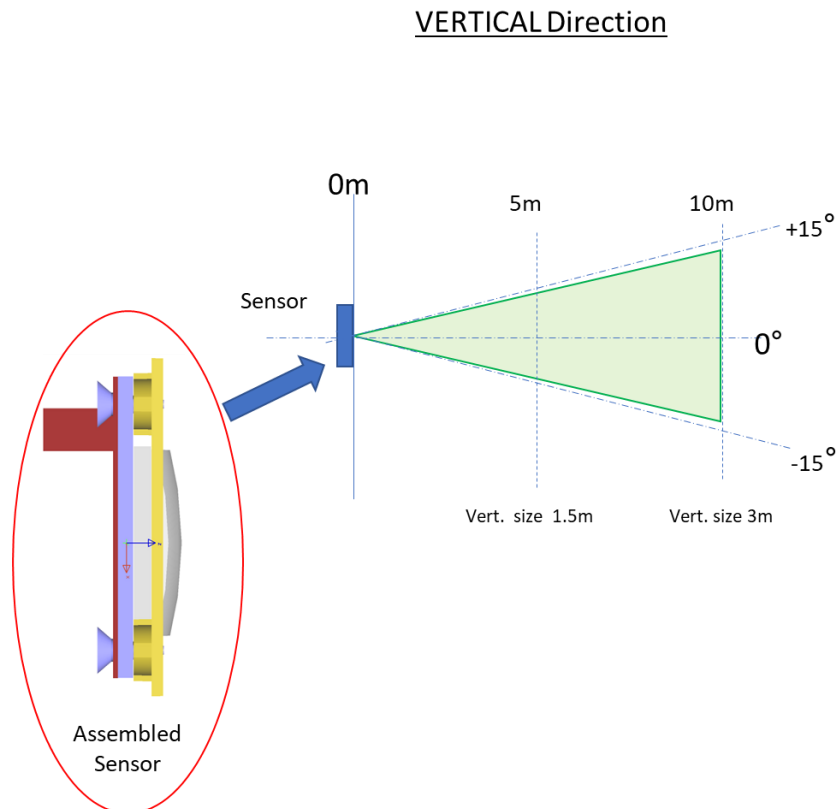
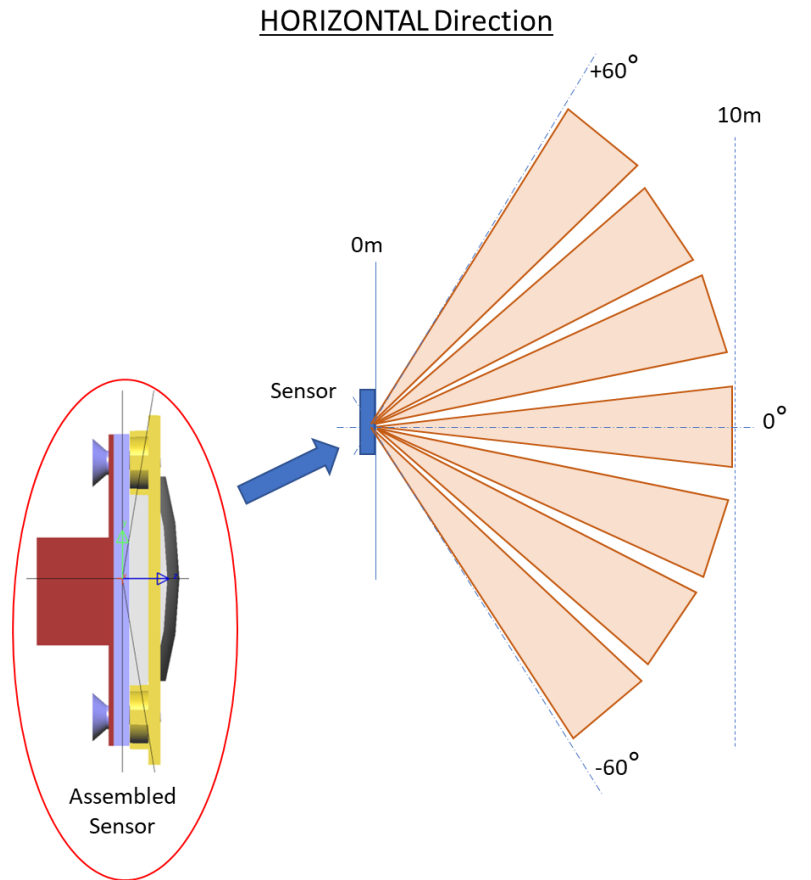
(Patented Lens for wall mounted movement/presence detector, optimized for TMOS sensor)

This document specifies TMOS sensor STHS34PF80 from STMicroelectronics and Lens TMOS10-12030 from Fresnel Factory Inc.

1. Dimension of TMOS10-12030



2. Detectable Field of View and distance

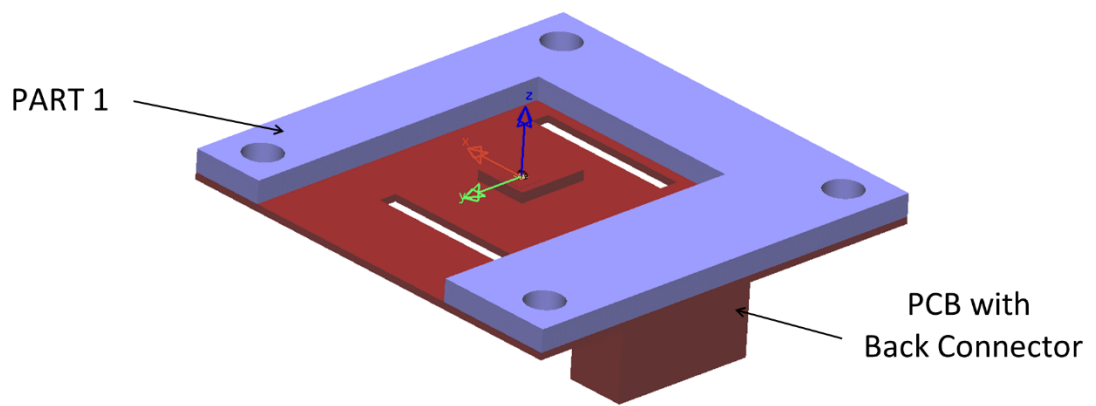
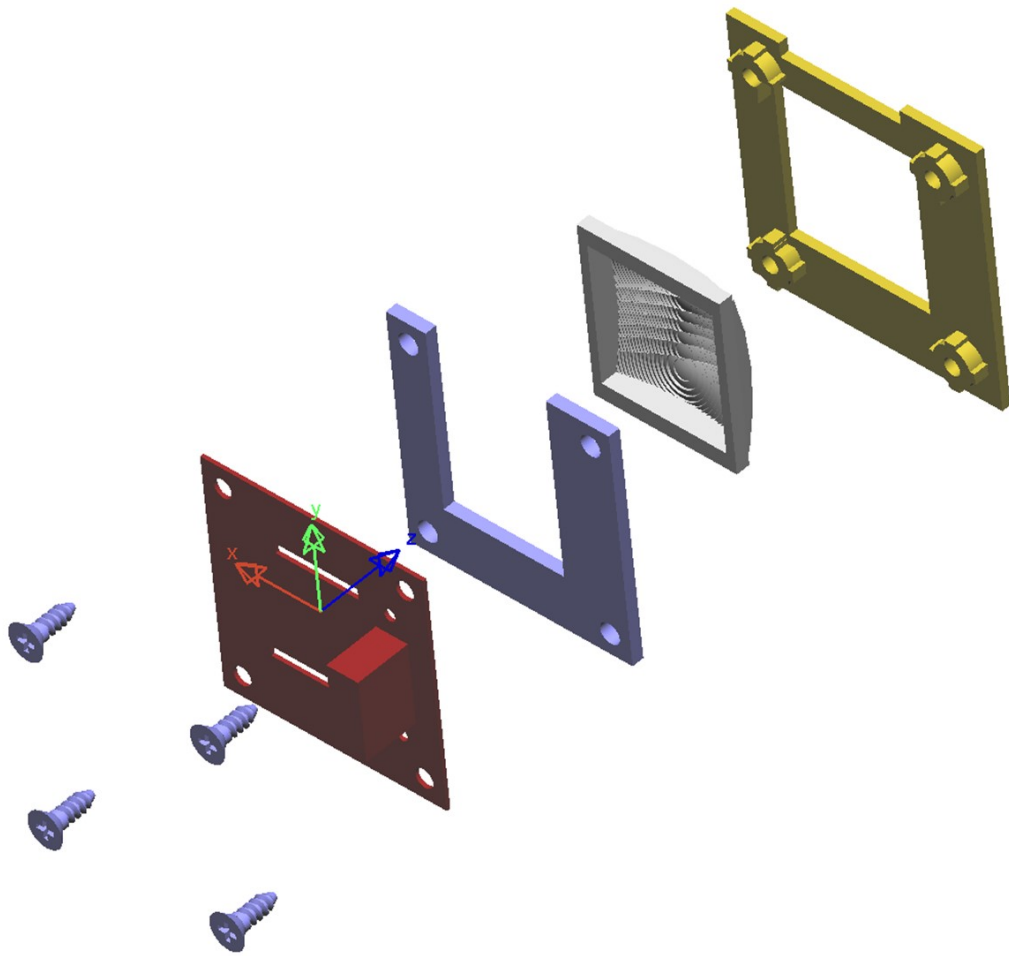


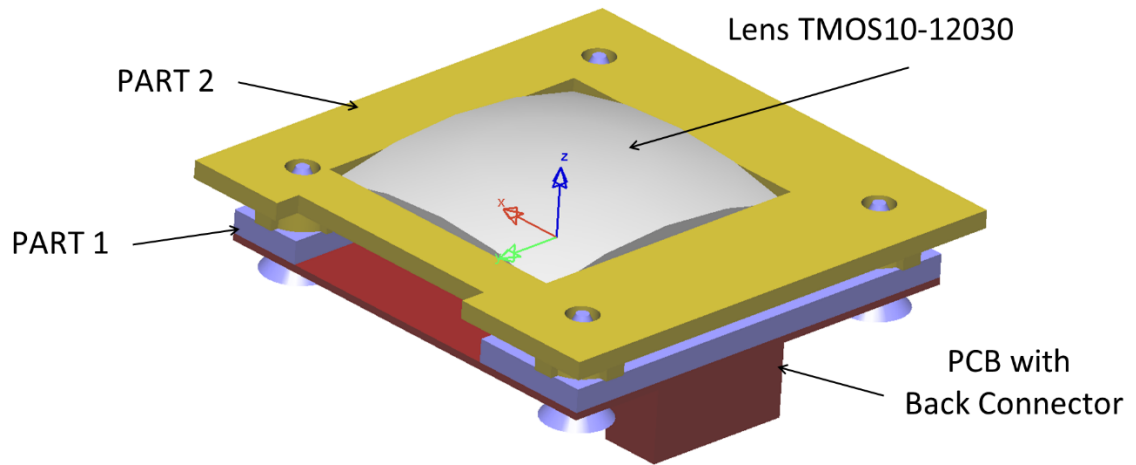
3. Housing for EVK with Back Connector

Please download 3D STP file for 3D printing in link below.

| | |
|--|---|
| Part 1 https://url.kr/tr4ji5 | Part 2 https://url.kr/gx3a8j |
|  |  |

Fastened by 4 Philips self-tapping Screws M2x6





- Contact
Fresnel Factory Inc.
Ashton Myung KIM
ashton@fresnelfactory.com
+82 10-5248-4630