

TCE. Plugs

with hexagon socket, technopolymer

BSP

RoHS

PA

+212 °F
-22 °F

MATERIAL

Glass-fibre reinforced polyamide based (PA) technopolymer, black colour, matte finish.

PACKING RING

NBR synthetic rubber.

MAXIMUM CONTINUOUS WORKING TEMPERATURE

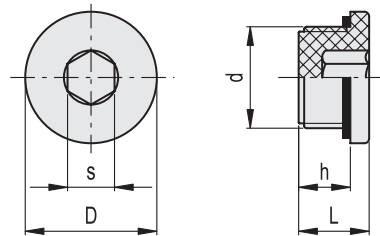
100°C.

TECHNICAL DATA

The tightening torque indicated in the table guarantees an optimal tightness, keeping the packing ring in the correct position.



ELESA Original design



BSP

METRIC

Code	Description	d	h	s	D	L	Tightening torque [Nm]	⚖️
161033	TCE.1/4	G 1/4	9	6	20	12	3	4
161034	TCE.3/8	G 3/8	9	8	22	13	3+5	5
161035	TCE.1/2	G 1/2	11	10	28	15	3+4	8
161036	TCE.3/4	G 3/4	12	12	32	16.5	3+5	14

- 1
- 2
- 3
- 4
- 5
- 6
- 7
- 8
- 9
- 10
- 11
- 12
- 13
- 14
- 15
- RH

Accessories for hydraulic systems