



Starke Series Small Polycarbonate Enclosures

PROVEN PROTECTION WHEN
"SMALL" IS A BIG ADVANTAGE!



Available in 38 sizes with opaque and clear screw cover options, Starke Series enclosures are ideal for applications where protection of small components and equipment is required.



MARKETS AND INDUSTRIES:

- Ideal for Non-Hazardous Industrial and Commercial OEM market segments
- Industries such as O&G, Electrical Control, Water Wastewater, Manufacturing, Communications, Wireless & Remote Monitoring

APPLICATIONS:

- Used for remote sensor mounting and small electronic controls in any environment.

INNOVATIVE FEATURES:

- Flush sides for a perfect fit in tight spots
- Several depths available in most sizes
- Resistant to harsh environments
- Multiple molded-in bosses for a variety of internal component mounting options
- Available in opaque and clear screw cover options

CONSTRUCTION:

Materials (Box and Cover):

- Box and Cover—Polycarbonate with UV inhibitors
- Back Panels—Phenolic Resin Hard Paper

Gasket:

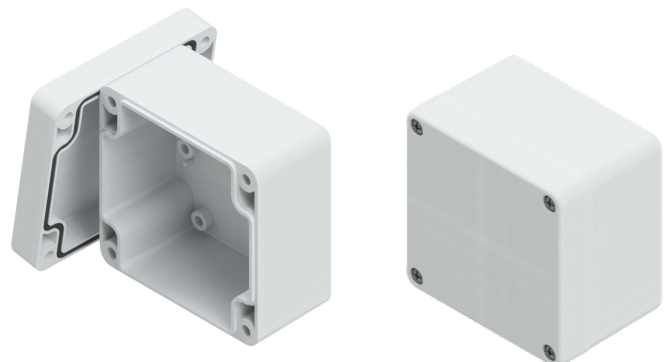
- Poured polyurethane seamless gasket provides watertight, dust-tight environmental seal

Stainless Steel Hardware:

- 304 Stainless Steel

INDUSTRY STANDARDS:

- UL/cUL File #E64358
- NEMA 250, UL Listed UL50, UL50e, UL508A, Type 1, 3R, 4X, 6P, 12 Rated
- CSA STD. C22.2 File #LR069014
- IEC 60529 File #E362920 IP66 Rated;
- Temperature Range: (-40°F to +212°F) (-40°C to +100°C)
- Flammability Rating: UL94-V2
- Self-Extinguishing: Non-halogenated
- Outdoor UV Exposure (UL 746C): (f1) Rated
- REACH, ROHS Compliant



CATALOG NUMBERS AND DIMENSIONS:

Starke Series Polycarbonate Enclosures with Opaque Covers

CATALOG #	OVERALL H x W x D	INSIDE H x W x D	BACK PANELS
ST060555W	2.56 x 1.97 x 2.17 (65 x 50 x 55)	2.36 x 1.77 x 1.93 (60 x 45 x 49)	n/a
ST090603W	3.86 x 2.52 x 1.46 (98 x 64 x 37)	3.54 x 2.20 x 1.93 (90 x 56 x 49)	n/a
ST080805W	3.23 x 3.15 x 2.17 (82 x 80 x 55)	3.03 x 2.95 x 1.93 (77 x 75 x 49)	BPS0808P
ST080809W	3.23 x 3.15 x 3.35 (82 x 80 x 85)	3.03 x 2.95 x 3.11 (77 x 75 x 79)	BPS0808P
ST080810W	3.23 x 3.15 x 3.74 (82 x 80 x 95)	3.03 x 2.95 x 3.50 (77 x 75 x 89)	BPS0808P
ST128055W	4.72 x 3.15 x 2.17 (120 x 80 x 55)	4.49 x 2.91 x 1.93 (114 x 74 x 49)	BPS1280P
ST128010W	4.72 x 3.15 x 3.94 (120 x 80 x 100)	4.49 x 2.91 x 3.74 (114 x 74 x 95)	BPS1280P
ST168055W	6.30 x 3.15 x 2.17 (160 x 80 x 55)	6.10 x 2.91 x 1.93 (155 x 74 x 49)	BPS1680P
ST168090W	6.30 x 3.15 x 3.54 (160 x 80 x 90)	6.10 x 2.91 x 3.31 (155 x 74 x 84)	BPS1680P
ST121255W	4.80 x 4.72 x 2.17 (122 x 120 x 55)	4.57 x 4.49 x 1.97 (116 x 114 x 50)	BPS1212P
ST121275W	4.80 x 4.72 x 2.95 (122 x 120 x 75)	4.57 x 4.49 x 2.72 (116 x 114 x 69)	BPS1212P
ST121211W	4.80 x 4.72 x 4.13 (122 x 120 x 105)	4.57 x 4.49 x 3.94 (116 x 114 x 100)	BPS1212P
ST161255W	6.30 x 4.72 x 2.17 (160 x 120 x 90)	6.06 x 4.69 x 1.93 (154 x 114 x 84)	BPS1612P
ST161290W	6.30 x 4.72 x 3.54 (160 x 120 x 140)	6.06 x 4.69 x 3.31 (154 x 114 x 84)	BPS1612P
ST161214W	6.30 x 4.72 x 5.51 (160 x 120 x 140)	6.06 x 4.69 x 5.24 (154 x 114 x 133)	BPS1612P
ST201275W	7.87 x 4.72 x 2.95 (200 x 120 x 75)	7.64 x 4.69 x 2.68 (194 x 114 x 68)	BPS2012P
ST201290W	7.87 x 4.72 x 3.54 (200 x 120 x 90)	7.64 x 4.69 x 3.27 (194 x 114 x 83)	BPS2012P
ST201510W	7.87 x 5.91 x 3.94 (200 x 150 x 100)	7.64 x 5.67 x 3.70 (194 x 144 x 94)	BPS2015P
ST201513W	7.87 x 5.91 x 4.92 (200 x 150 x 125)	7.64 x 5.67 x 4.69 (194 x 144 x 119)	BPS2015P
ST251690W	9.84 x 6.30 x 3.54 (250 x 160 x 90)	9.61 x 6.06 x 3.31 (244 x 154 x 84)	BPS2516P
ST251611W	9.84 x 6.30 x 4.53 (250 x 160 x 115)	9.61 x 6.06 x 4.29 (244 x 154 x 109)	BPS2516P
ST251612W	9.84 x 6.30 x 4.72 (250 x 160 x 120)	9.61 x 6.06 x 4.49 (244 x 154 x 114)	BPS2516P
ST251615W	9.84 x 6.30 x 5.91 (250 x 160 x 150)	9.61 x 6.06 x 5.67 (244 x 154 x 144)	BPS2516P

Starke Series Polycarbonate Enclosures with Clear Covers

CATALOG #	OVERALL H x W x D	INSIDE H x W x D	BACK PANELS
STCC060555W	2.56 x 1.97 x 2.17 (65 x 50 x 55)	2.36 x 1.77 x 1.93 (60 x 45 x 49)	n/a
STCC090603W	3.86 x 2.52 x 1.46 (98 x 64 x 37)	3.54 x 2.20 x 1.93 (90 x 56 x 49)	n/a
STCC080805W	3.23 x 3.15 x 2.17 (82 x 80 x 55)	3.03 x 2.95 x 1.93 (77 x 75 x 49)	BPS0808P
STCC128055W	4.72 x 3.15 x 2.17 (120 x 80 x 55)	4.49 x 2.91 x 1.93 (114 x 74 x 49)	BPS1280P
STCC168090W	6.30 x 3.15 x 3.54 (160 x 80 x 90)	6.10 x 2.91 x 3.31 (155 x 74 x 84)	BPS1680P
STCC121275W	4.80 x 4.72 x 2.95 (122 x 120 x 75)	4.57 x 4.49 x 2.72 (116 x 114 x 69)	BPS1212P
STCC121211W	4.80 x 4.72 x 4.13 (122 x 120 x 105)	4.57 x 4.49 x 3.94 (116 x 114 x 100)	BPS1212P
STCC161255W	6.30 x 4.72 x 2.17 (160 x 120 x 55)	6.06 x 4.69 x 1.93 (154 x 114 x 49)	BPS1612P
STCC161290W	6.30 x 4.72 x 3.54 (160 x 120 x 90)	6.06 x 4.69 x 3.31 (154 x 114 x 133)	BPS1612P
STCC161214W	6.30 x 4.72 x 5.51 (160 x 120 x 140)	6.06 x 4.69 x 5.24 (154 x 114 x 133)	BPS1612P
STCC201275W	7.87 x 4.72 x 2.95 (200 x 120 x 75)	7.64 x 4.69 x 2.68 (194 x 144 x 68)	BPS2012P
STCC201510W	7.87 x 5.91 x 3.94 (200 x 150 x 100)	7.64 x 5.67 x 3.70 (194 x 144 x 94)	BPS2015P
STCC201513W	7.87 x 5.91 x 4.92 (200 x 150 x 125)	7.64 x 5.67 x 4.69 (194 x 144 x 119)	BPS2015P
STCC251612W	9.84 x 6.30 x 4.72 (250 x 160 x 120)	9.61 x 6.06 x 4.49 (244 x 154 x 114)	BPS2516P
STCC251615W	9.84 x 6.30 x 5.91 (250 x 160 x 150)	9.61 x 6.06 x 5.67 (244 x 154 x 144)	BPS2516P

All measurements are in inches; items in parentheses are in millimeters.



STAHLIN

500 Maple Street, Belding, MI 48809
E: csr@robroyenclosures.com P: 616.794.0700