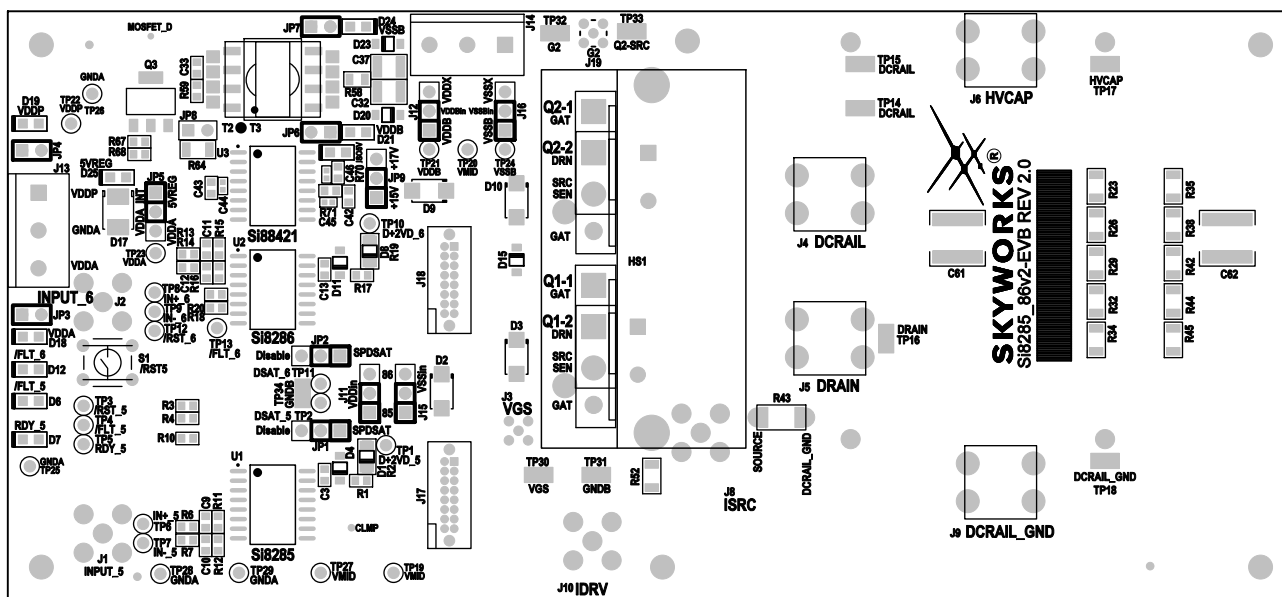
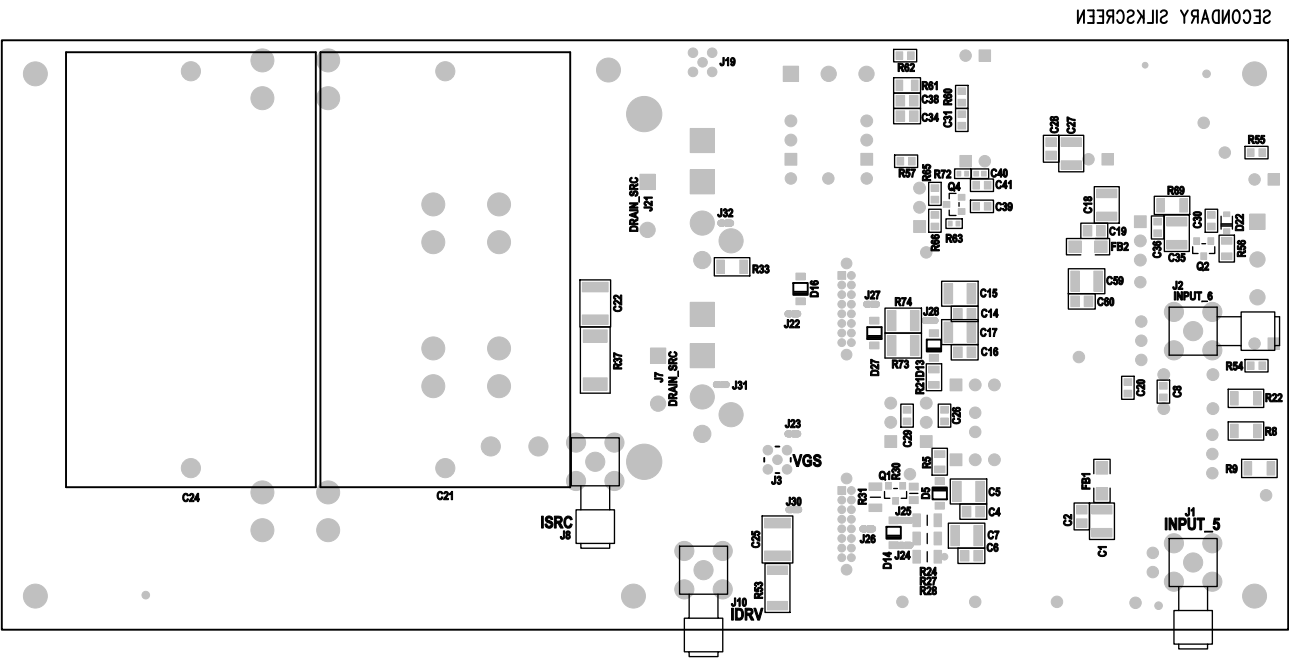


PRIMARY SILKSCREEN



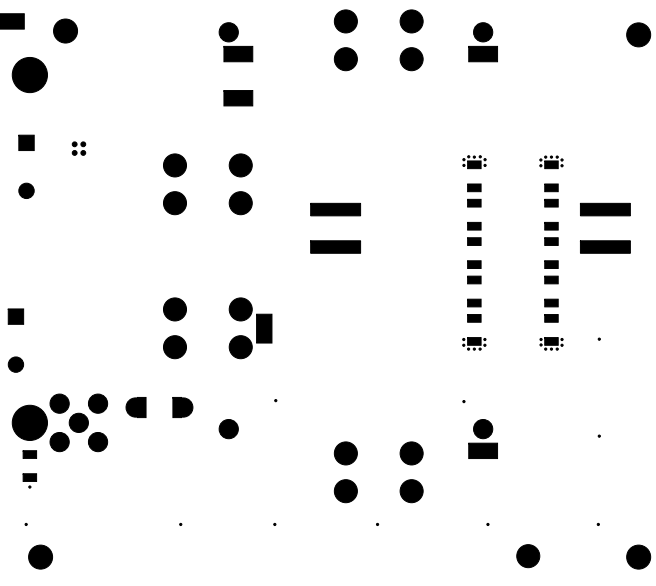
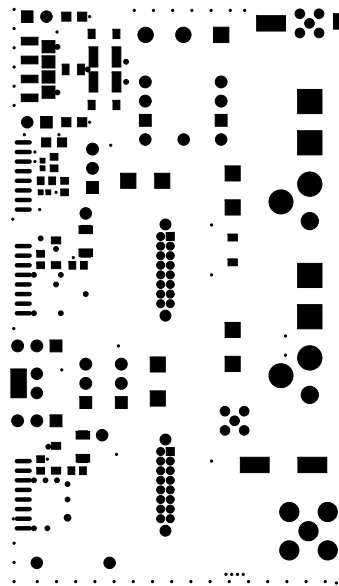
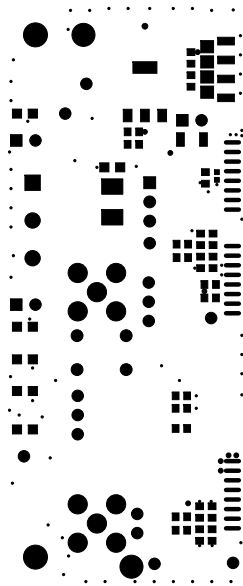


SECONDARY SILKSCREEN



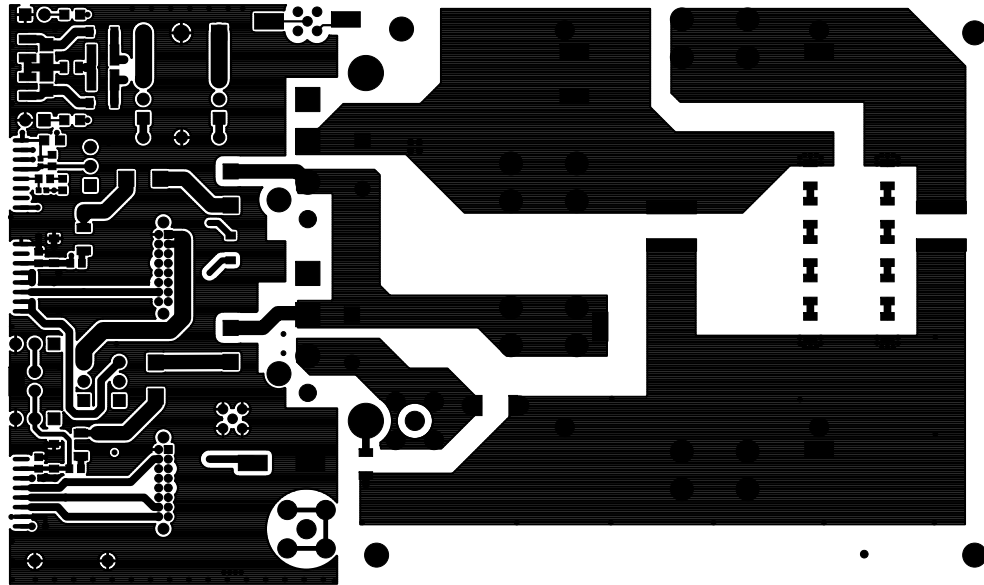
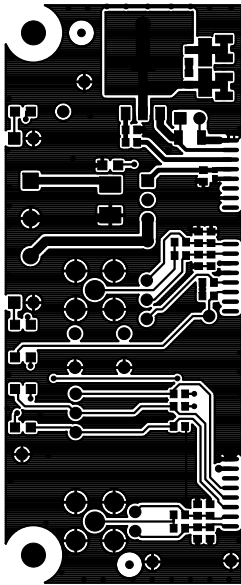


PRIMARY SOLDER MASK



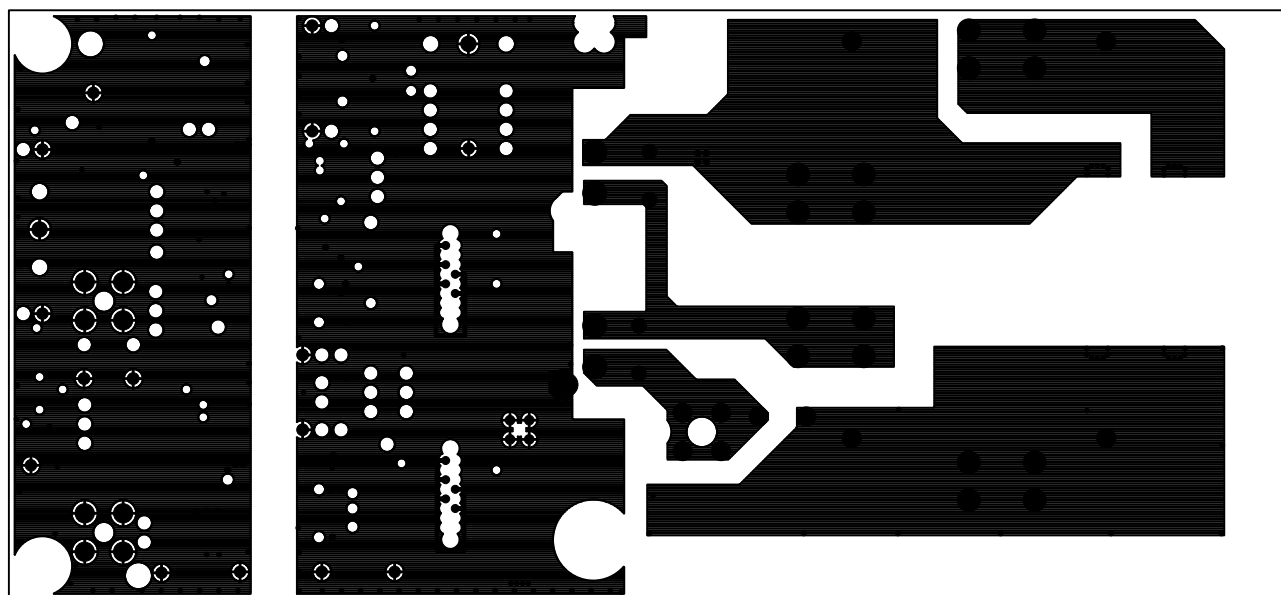


PRIMARY SIDE



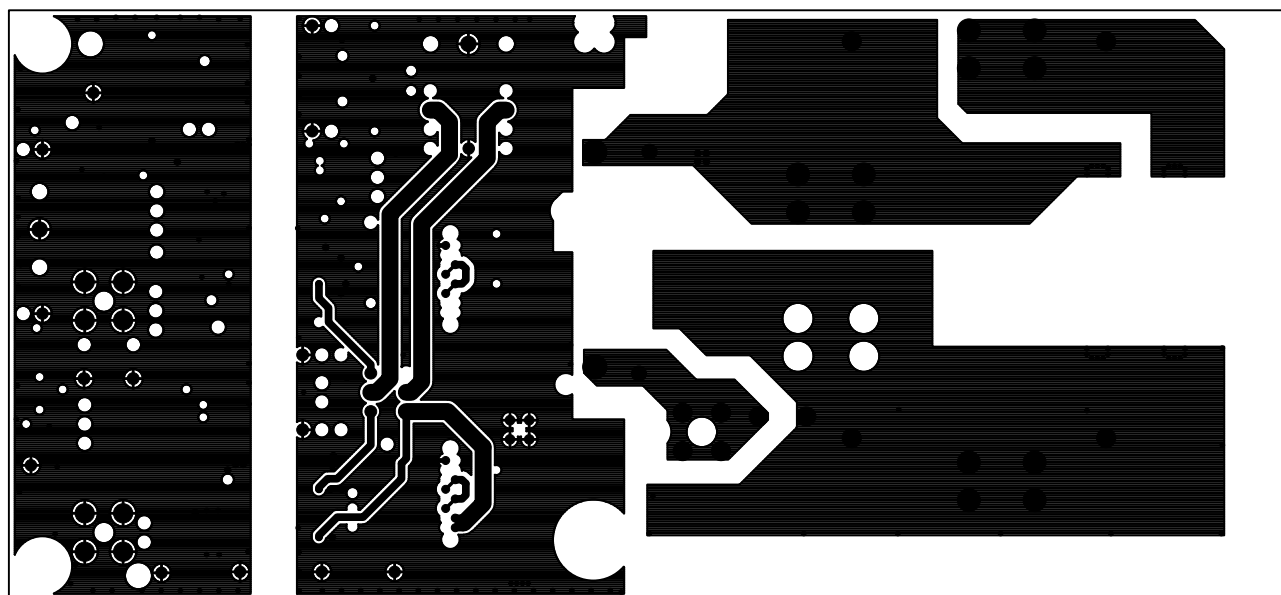


L02 - GND/HV ROUTE



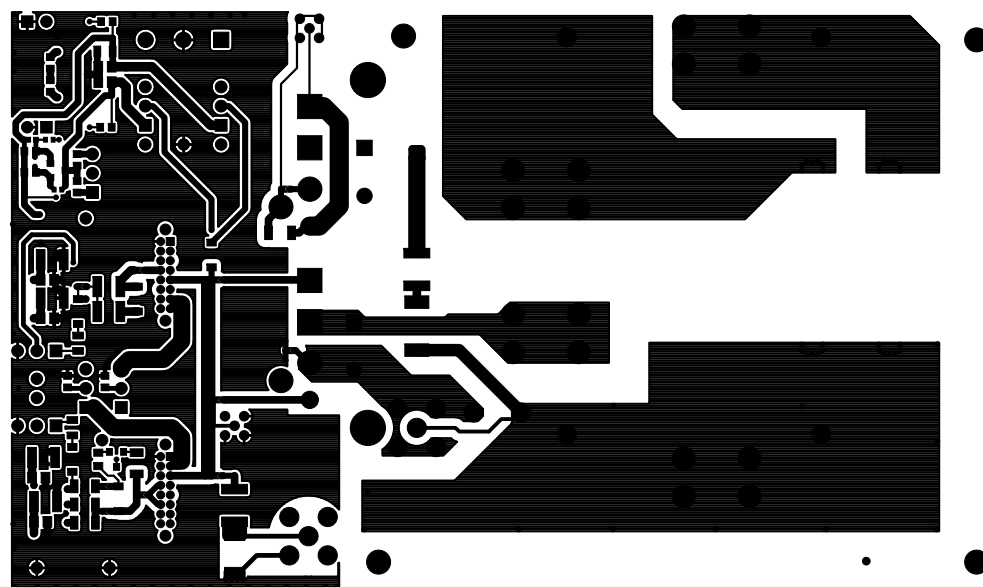
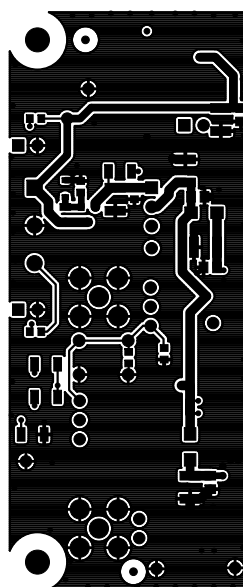


L03 - GND/HV ROUTE



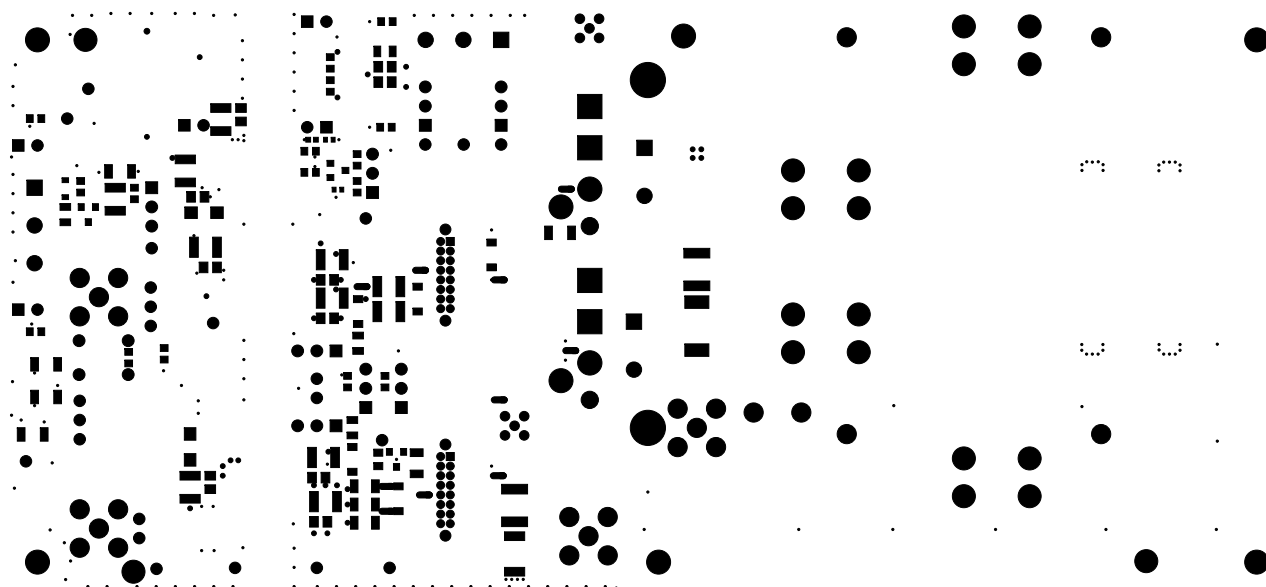


SECONDARY SIDE



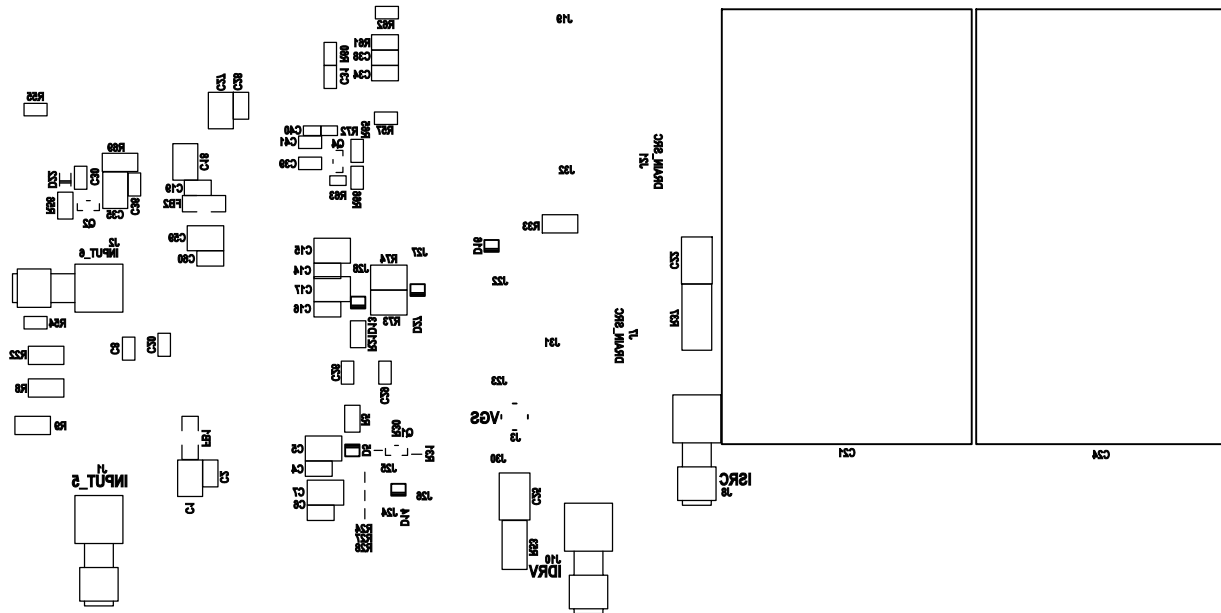


SECONDARY SOLDER MASK



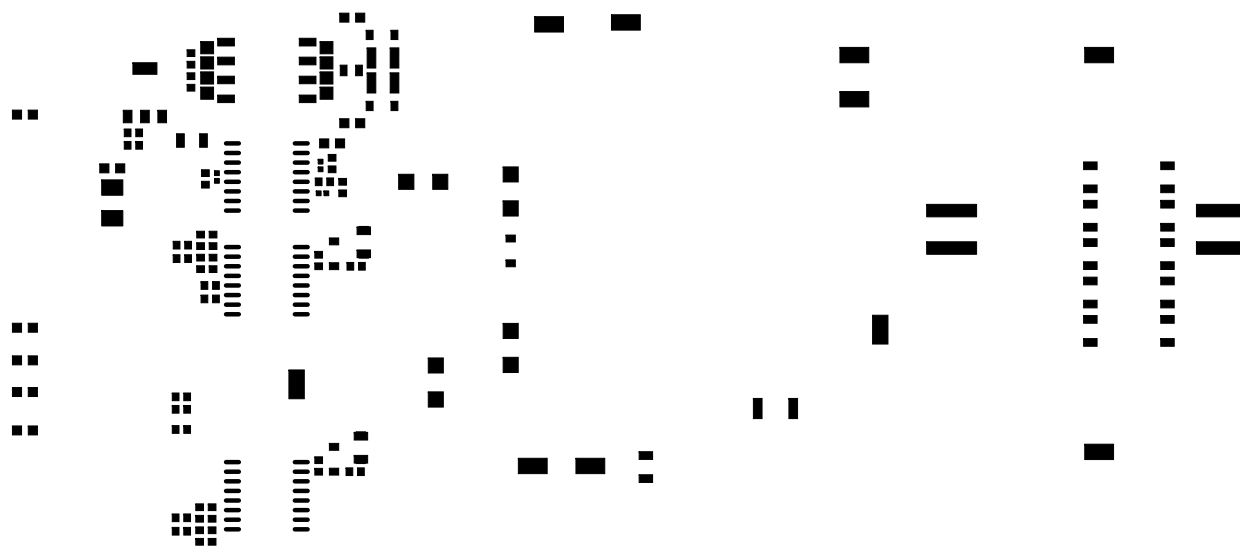


SECONDARY SILKSCREEN





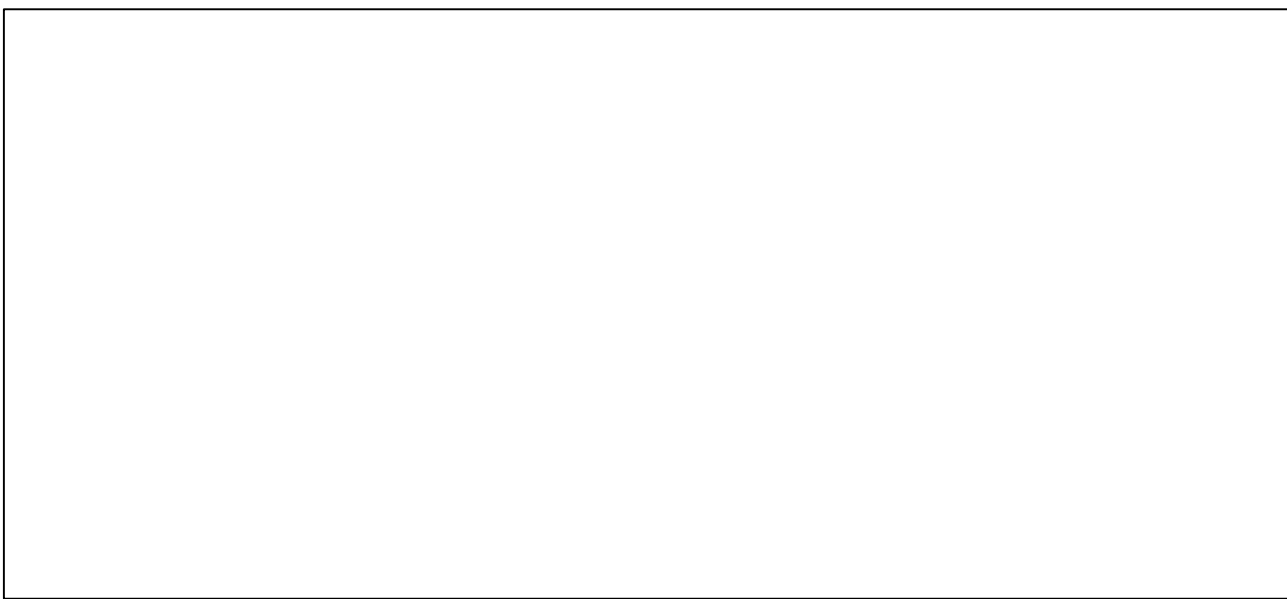
PRIMARY SOLDER PASTE

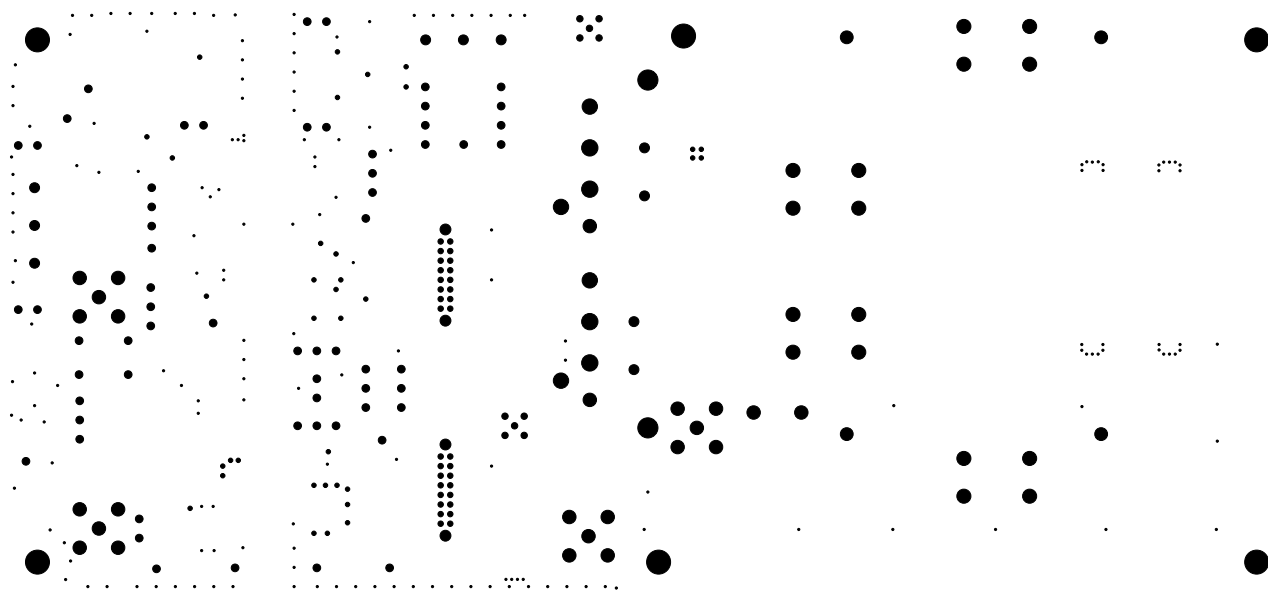


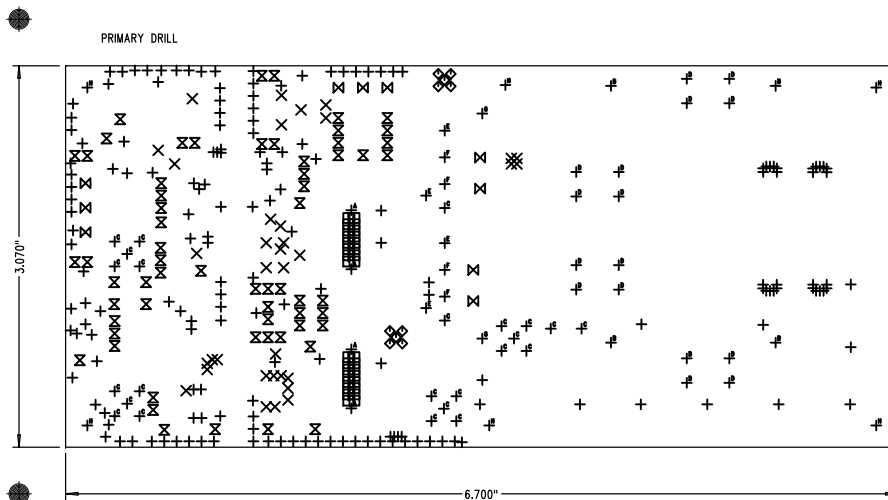


SECONDARY SOLDER PASTE









NOTES : UNLESS OTHERWISE SPECIFIED

1. MANUFACTURE IN ACCORDANCE WITH IPC-6012, TYPE 3, CLASS 2.
2. END PRODUCT FEATURES SHALL NOT VARY MORE THAN 20% FROM ARTWORK ORIGINALS.
3. LAMINATE AND PREPREG SHALL BE AS PER IPC-4101/26 WITH A DECOMPOSITION TEMPERATURE $\geq 345^{\circ}\text{C}$, COLOR, NATURAL.
4. COPPER WEIGHT SHALL BE 2.0 OZ./SQ. FT. AFTER PLATING.
5. ALL PLATED THROUGH HOLES SHALL HAVE A MINIMUM OF 0.001" COPPER.
6. DRILL HOLE TOLERANCE AFTER PLATING SHALL BE ± 0.003 ".
7. MINIMUM ANNULAR RING SHALL BE 0.001".
8. MINIMUM ANNULAR RING AT EMERGENT CONDUCTORS SHALL BE 0.003".
9. FINAL PCB THICKNESS SHALL BE $0.062" \pm 10\%$ ACROSS PADS.
10. WARP/TWIST SHALL NOT EXCEED 0.75%
11. FINISH SHALL BE LPI, BLUE S.M.O.B.C., PLATE ENIG BOTH SIDES.
12. SILKSCREEN WITH NONCONDUCTIVE WHITE EPOXY INK.
13. NO VENDOR MARKINGS OR ALTERATIONS SHALL BE PERMITTED ON ANY METAL OR SILKSCREEN LAYERS.
14. DO NOT CLEAR SILKSCREEN FROM VIA PADS.
A MINIMAL SILKSCREEN CLEARANCE FROM VIA HOLES IS ACCEPTABLE.
15. REFERENCE ADDITIONAL FAB NOTES IN FILE README.TXT

LAYER STACKUP

LAYER STACKUP	FILE NAMES
PRIMARY SILKSCREEN	8285-86v2_PSS.PHO
PRIMARY SOLDERMASK	8285-86v2_PSM.PHO
PRIMARY SIDE	8285-86v2_PRLPHO
GND PLANE/HV ROUTE	8285-86v2_L02.PHO
GND PLANE/HV ROUTE	8285-86v2_L03.PHO
SECONDARY SIDE	8285-86v2_SEC.PHO
SECONDARY SOLDERMASK	8285-86v2_SSM.PHO
SECONDARY SILKSCREEN	8285-86v2_SSS.PHO

SCALE: NONE

SIZE	QTY	SYM	PLT	TOOL	TOL
0.012	178	+	P	1	$+0/-0.012$
0.023	36	X	P	2	$+/-0.003$
0.028	32	□	P	3	$+/-0.003$
0.033	10	◇	P	4	$+/-0.003$
0.040	62	⊗	P	5	$+/-0.003$
0.052	8	⊗	P	6	$+/-0.003$
0.056	4	A	N	7	$+/-0.003$
0.067	4	B	P	8	$+/-0.003$
0.070	24	C	P	9	$+/-0.003$
0.073	16	D	P	10	$+/-0.003$
0.080	4	E	P	11	$+/-0.003$
0.085	4	F	P	12	$+/-0.003$
0.105	2	G	P	13	$+/-0.003$
0.125	6	H	N	14	$+/-0.003$

UNLESS OTHERWISE SPECIFIED DIMENSIONS ARE IN INCHES AND APPLY AFTER FINISH DIMENSIONS IN BRACKETS () ARE IN MILLIMETERS INTERPRET DRAWING PER MIL-D-1000		THIS DOCUMENT CONTAINS PROPRIETARY INFORMATION AND SHALL NOT BE DUPLICATED OR USED FOR ANY PURPOSE OTHER THAN THAT FOR WHICH PROVIDED OR DISCLOSED IN WHOLE OR IN PART, WITHOUT THE WRITTEN CONSENT OF SKYWORKS SOLUTIONS INC..		COMPANY: SKYWORKS®	
TOLERANCES		NAME: Si8285/86v2-EVB		REV : 2.0	
HOLE TOLERANCES PER 78027		SIZE		PART NUMBER:	
DECIMALS .XX \pm / - .XXX \pm / -	ANGLES \pm / -	SURFACES MICRONS		B	
PART TO BE FREE OF BURRS		DESIGN	LN	110CT2021	
LAYOUT		CT	220CT2021		
BREAK EDGES	BEND RADIUS	BEND RELIEF		DO NOT SCALE DRAWING	
MAX	MAX	MAX		SCALE 1:1 FABRICATION DRAWING SHEET 1 OF 1	