



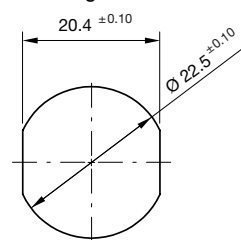
# Series 84 EAO IO-Link Touch.

## Operating Instructions «Hygiene» button.

### Technical data

Operating voltage	DC 24V (8.4 ... 32V)
Load current	Max. 200 mA
Output	Adjustable PNP/NPN; NO/NC
Length of output pulse	Adjustable
Reverse polarity protection	Protection of all cables/lines
Short circuit protection	Protected against short circuit and overload
Voltage drop	Max. 5V at 200 mA load current
Power consumption at 24V	Max. 40 mA
Operating temperature	-30 °C ... +65 °C
Protection degree IP	Front side IP69K maximum unevenness in mounting surface < 0.1 mm
Protection degree IK	IK08
Communication interface	IO-Link specification V1.1
Control voltage E1/E2	on 80 % $U_v+$ , off 0 ... 20 % $U_v+$
Measuring principle	Capacitive
Type of actuation	Touch
Actuation force	No actuation force required
Max. altitude	2000 m above sea level with «CSA listing»
Relative air humidity	Max. 95 %, non-condensing

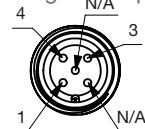
### Mounting cut-out



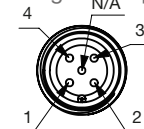
The IO-Link Touch is secured against rotation by the illustrated hole.

### Connection options

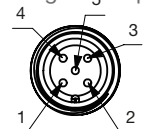
Plug M12, 3-pin



Plug M12, 4-pin

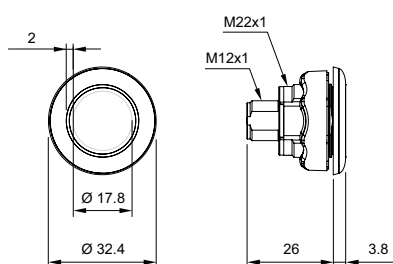


Plug M12, 5-pin



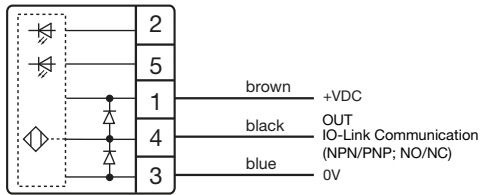
All dimensions in mm.

### Dimensions



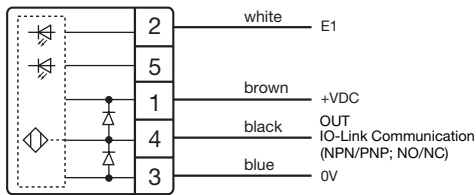
**Connection plan**

3-pin



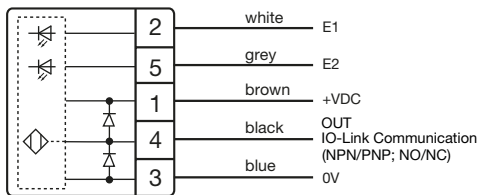
The product description will indicate the configuration.

4-pin



The product description will indicate the configuration.

5-pin



The product description will indicate the configuration.

**Standard symbols (examples)**

Symbol B10	Symbol B11	Symbol B12	Symbol B13
Symbol B14	Symbol C17	Symbol C18	Symbol C12
Symbol C19	Symbol C16		

**Safety**

General safety

All work on electrical systems or operating equipment may only be carried out by a specially qualified electrician according to the applicable electrotechnical regulations.

The safety of the system in which the IO-Link Touch is integrated is the responsibility of the operator.

**WARNING**



**Improper work on electrical systems!**

Electric shock can result in death or life-threatening injuries.

- Before working on electrical systems, disconnect them from their voltage supply and secure them against being switched on again
- Work on electrical installations should be carried out only by qualified personnel in compliance with local and national electrical regulations and specifications



**Intended use**

The IO-Link Touch is intended for use in accordance with the items listed here, the values from the “Technical specifications” chapter and the product description.

- Only connect the product to a limited energy source as per IEC 61010 or an NEC class 2 power supply unit.
- Source current < 4A at maximum operating voltage

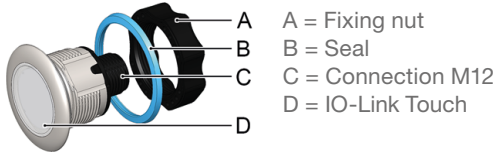
**Foreword**

These operating instructions are intended for technicians/installers and operators and should be kept for future reference. Read these operating instructions carefully and make sure that you have fully understood the contents before installing or working with the IO-Link Touch.

## Assembly

### Requirements

- Mounting surface is level and has been thoroughly cleaned (maximum unevenness in mounting surface 0.1 mm)
- The panel is between 1.0 mm and 9.5 mm thick



- Disconnect the system from its voltage supply and secure it against being switched on again
- Check the correct assembly of the seal (B) and correct it if necessary
- Clean the seal before assembly
- Insert the IO-Link Touch (D) into the prepared hole and screw the lock nut (A) on
- Position the IO-Link Touch (D) and tighten the lock nuts with max. 1.5 Nm
- Connect the IO-Link Touch (D) electrically to terminal (C) according to the connection plan

## Maintenance

### Maintenance operations

Carry out the following maintenance operations at the specified intervals.

Maintenance operations	as needed	annually
Clean the switch surface	X	
Check cables for intactness and firm fit		X
Check screw connections for tightness		X

## NOTICE

Abrasive aids and solvents contained in cleaning agents can attack the plastic of the button!

- Clean the surface of the button with a neutral cleaning agent or a damp microfiber cloth
- Do not use abrasive aids such as steel wool and steel brushes

### Disassembly with lock nut

- Disconnect the system from its voltage supply and secure it against being switched on again
- Disconnect the electrical connection and remove the lock nuts

### Disposal

Different types of electrical and electronic components must be recycled according to their type. All applicable statutory, state and local laws and regulations must be complied with.

### Approvals



EN Contacts in one section must be same polarity  
FR Les contacts dans la partie ON doivent être de même polarité

# EAO Contact.

## *Your centre of excellence.*

### Headquarters

EAO Holding AG  
Tannwaldstrasse 88  
CH-4600 Olten  
Telephone +41 62 286 92 00  
info@eao.com

### Manufacturing Companies

**Switzerland**  
EAO AG  
Tannwaldstrasse 88  
CH-4600 Olten  
Telephone +41 62 286 91 11  
info@eao.com

EAO Systems AG  
Tannwaldstrasse 88  
CH-4600 Olten  
Telephone +41 62 286 91 11  
sales.esy@eao.com

**China**  
EAO (Guangzhou) Ltd.  
3/F, Block G4, South China  
New Materials Innovation Park  
31 Kefeng Road  
Guangzhou Science City  
CN-Guangzhou, PRC  
Telephone +86 20 3229 0390  
sales.ecn@eao.com

**Germany**  
EAO Automotive GmbH & Co. KG  
Richard-Wagner-Straße 3  
DE-08209 Auerbach/Vogtland  
Telephone +49 3744 8264 0  
sales.esa@eao.com

**North America**  
EAO Corporation  
One Parrott Drive  
Shelton  
US-CT 06484  
Telephone +1 203 951 4600  
sales.eus@eao.com

### Sales Companies

**China**  
EAO (Guangzhou) Ltd.  
3/F, Block G4, South China  
New Materials Innovation Park  
31 Kefeng Road  
Guangzhou Science City  
CN-Guangzhou, PRC  
Telephone +86 20 3229 0390  
sales.ecn@eao.com

EAO (Shanghai) Office  
Rm.401, Lihpao Plaze,  
NO.159 Shenwu Road,  
Minhang District,  
CN-Shanghai, 201106.  
PRC  
Telephone +86 21 6095 0717  
sales.ecn@eao.com

**France**  
EAO France SAS  
Bâtiment Silex  
15 rue des Cuirassiers  
CS 33821  
FR-69487 Lyon Cedex O3  
Telephone +33 9 74 18 93 41  
sales.eifr@eao.com

**Germany, Austria, Czech Republic,  
Poland, Slovakia**  
EAO GmbH  
Langenberger Straße 570  
DE-45277 Essen  
Telephone +49 201 8587 0  
sales.ede@eao.com

**Hong Kong (Asia Pacific)**  
EAO (Far East) Ltd.  
Unit A1, 1/F, Block A  
Tin On Industrial Building  
777 Cheung Sha Wan Road  
Lai Chi Kok, Kln  
HK-Hong Kong  
Telephone +852 27 86 91 41  
sales.ehk@eao.com

**Italy**  
EAO Italia S.r.l.  
Centro Direzionale Summit –  
Palazzo D1  
Via Brescia 28  
IT-20063 Cernusco sul Naviglio (MI)  
Telephone +39 029 247 0722  
sales.eit@eao.com

**Japan**  
EAO Japan Co. Ltd.  
Net 1 Mita Bldg. 3F  
3-1-4 Mita Minato-ku  
JP-Tokyo 108-0073  
Telephone +81 3 5444 5411  
sales.ejp@eao.com

**Netherlands, Belgium**  
EAO Benelux B.V.  
Kamerlingh Onnesweg 46  
NL-3316 GL Dordrecht  
Telephone +31 78 653 17 00  
sales.enl@eao.com

**North America**  
EAO Corporation  
One Parrott Drive  
Shelton  
US-CT 06484  
Telephone +1 203 951 4600  
sales.eus@eao.com

**Switzerland**  
EAO Schweiz AG  
Tannwaldstrasse 86  
CH-4600 Olten  
Telephone +41 62 286 95 00  
sales.ech@eao.com

**United Kingdom, Denmark,  
Finland, Ireland, Norway, Sweden**  
EAO Ltd.  
Highland House  
Albert Drive  
Burgess Hill  
GB-West Sussex RH15 9TN  
Telephone +44 1444 236 000  
sales.euk@eao.com