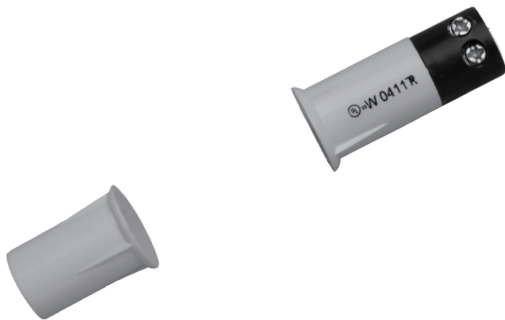


STB-3/8 TC

RECESSED CONTACTS

.37"(9.5mm) Recessed Type W/Terminal Quick-Connect



Contact Size: .37"×.92"(9.5mm×23.3mm)

Standard Magnet Size: .37"×.58"(9.5mm×14.8mm)



Standard Gap: .6"(15mm)

Colors: White, Brown



STB-3/8 TC: Terminal Connect, No Leads.

Specifications

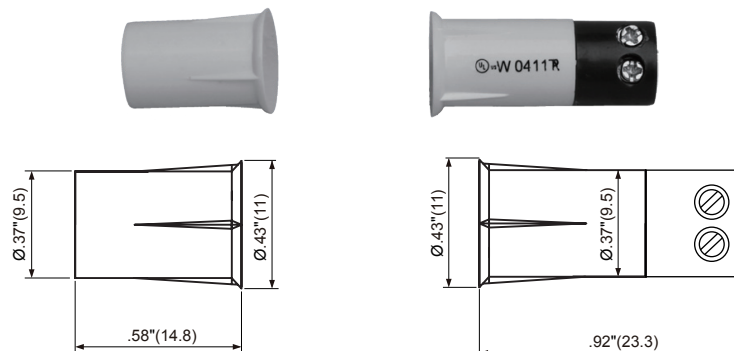
| Part Number | Gap Inch(mm) | Loop Open/Closed | Reed Form | Max. Contact Rating (W) | Max. Initial Contact Resistance (mΩ) | Max. Switching Voltage (V) | Max. Switching Current (A) |
|-----------------|--------------|------------------|-----------------|-------------------------|--------------------------------------|----------------------------|----------------------------|
| STB-3/8 TC | .6"(15) | CLOSED | Normally Open | 10 | 100 | AC110/DC100 | 0.5 |
| STB-3/8 TC WG | 1"(25) | CLOSED | Normally Open | 10 | 100 | AC110/DC100 | 0.5 |
| STB-3/8 TC DM | .5"(12.5) | CLOSED | Normally Open | 10 | 100 | AC110/DC100 | 0.5 |
| STB-3/8 TC FLAT | .5"(12.5) | CLOSED | Normally Open | 10 | 100 | AC110/DC100 | 0.5 |
| STB-3/8B TC | .5"(12.5) | OPEN | Normally Closed | 10 | 100 | AC110/DC100 | 0.5 |

OPERATING TEMPERATURE:-40°C to +60°C

Outline Dimensions

Unit: inch(mm)

STB-3/8 TC



The Best Product Guarantee Since 1984 [®]
TANE ALARM PRODUCTS

906 JERICHO TURNPIKE, NEW HYDE PARK, NY 11040
 Tel: 800-852-5050 • 516-328-3351 • Fax: 516-326-9125
 www.tanealarm.com • E-MAIL: info@tanealarm.com

STB-3/8 TC

RECESSED CONTACTS

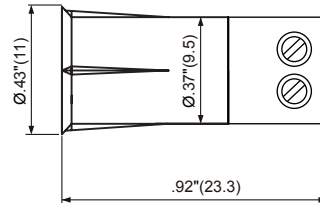
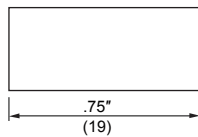
Outline Dimensions

Unit: inch(mm)

STB-3/8 TC WG



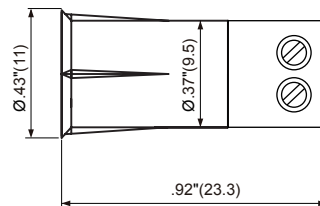
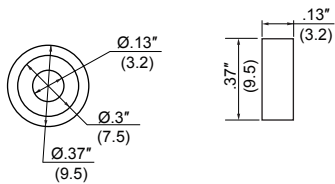
Bare Rare Earth
(BT 3/8"×3/4")



STB-3/8 TC DM



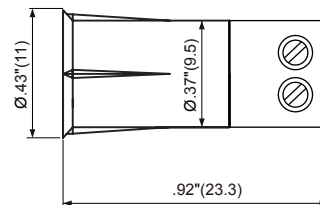
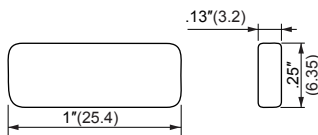
Bare Rare Earth
(BT 3/8"×1/8"DM)



STB-3/8 TC FLAT



Bare Rare Earth
(BT 1/8"×1/4"×1"ADH)



"We Contact The World"®