

S SW FS - S01 - AC 05 - HWH

SUNTSU

SWITCH

FOOT SWITCH

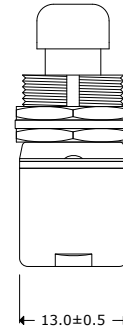
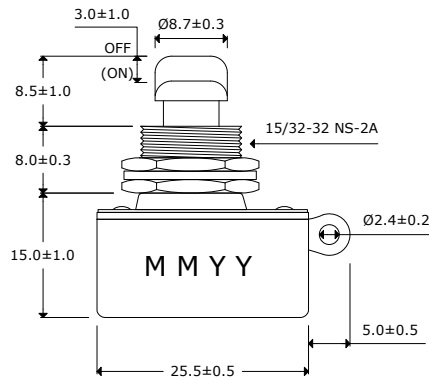
SERIES NUMBER

SWITCH FUNCTION
A : SPST OFF-(ON)

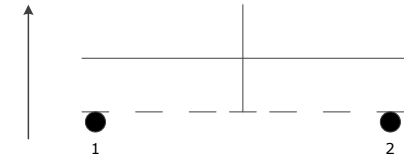
TERMINAL CODE
05 : Solder Type

BUSHING AND BUTTON SPEC
C : Button 8.7Ø, Bushing 8.0mm

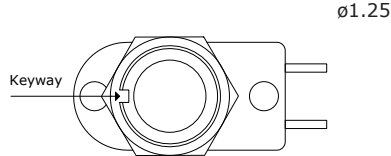
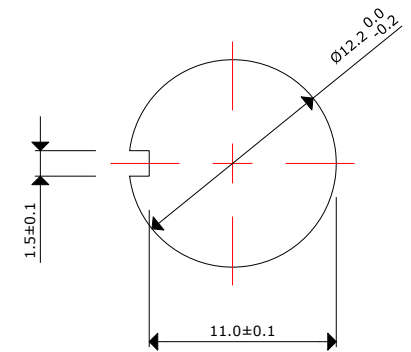
ACCESSORIES
H : Hex Nut
W : Spring Washer



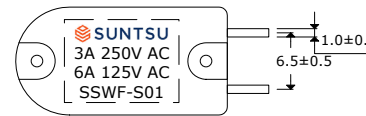
Test Circuit



Mounting Hole



Top View



Bottom View

Soldering Ability:

Be soldered in 3 seconds
Be soldered in 360±20°C

Electrical Parameters:

Rating: 6A 125V AC, 3A 250VAC
Contact Resistance: 50mΩ Max

Insulation Resistance: DC 500V 100MΩ Min.

Dielectric Strength: AC 1500V 1 minute

Operation Temperature: -20°C ~ 65°C

Switch Function: 2P SPST OFF-(ON), PUSH ON

Accessories: 2 HEX Nut & 1 SPRING Washer Assembly

Materials:

Frame: Black, PF

Actuator: Ni-plated, Brass

Terminals: Silver plated, Copper Alloy

Remarks:

- 500pcs per master carton
- Electrical life 20,000 cycles
- Mechanical life 100,000 cycles



Momentary Foot Switch

Document History				Part No.	REV.	Drawn	Page
Edits Made	Date	Edited By	Approved By	SSWFS-S01-AC05-HWH	A	B. Gibbons	09/07/2021
Initial Release	09/07/2021	B. Gibbons	KH Mun				Checked
				None	KH Mun	09/07/2021	
				Tolerance	Approved	KH Mun	09/07/2021
					mm		