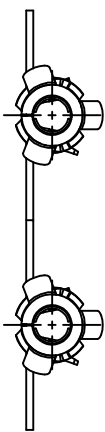
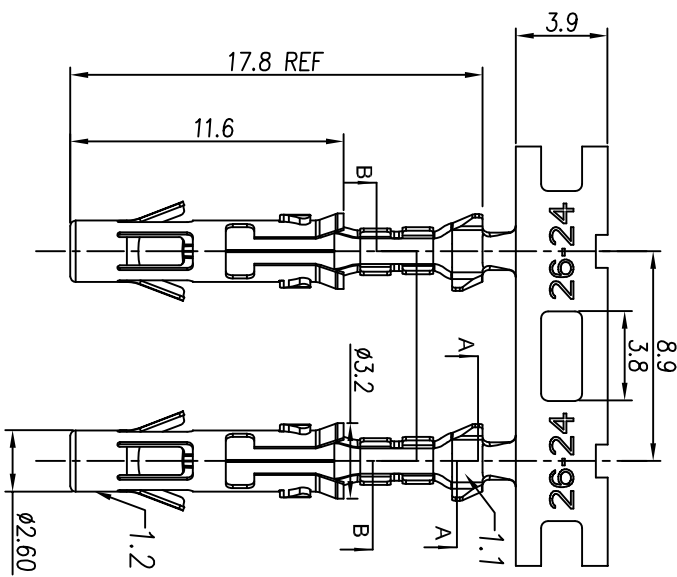
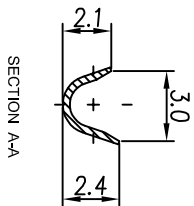
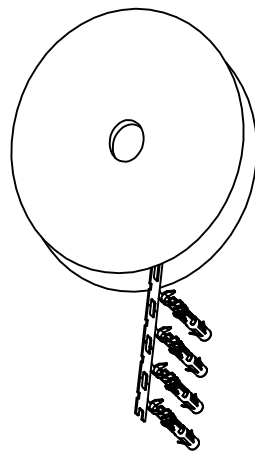


REVISIONS				
REV	ECO	DESCRIPTION	DATE	BY APPR
A1	-	RELEASED DRAWING	Jul-16-18	Flan Tommy



CONTACT ORIENTATION ON ROLL(3000PCS/COIL)

NOTES : (UNLESS OTHERWISE SPECIFIED)

1. MATERIAL :
 - 1.1. CONTACT BODY : COPPER ALLOY.
 - 1.2. OUTER SPRING : STAINLESS STEEL.
2. SPECIFICATIONS :
 - 2.1 CURRENT RATING : 13A MAX.
 - 2.2 TERMINATION TYPE : CRIMPING.
 - 2.3 WIRE RANGE : 26~24AWG.
 - 2.4 WIRE INSULATION DIA(MAX) : ϕ 2.1mm.
3. RoHS COMPLIANT.
4. ALL DIMENSIONS ARE FOR REFERENCE USE ONLY.
5. AVAILABLE TOOLS :
 - 5.1 HAND CRIMPER : MFX-3954.
 - 5.2 CRIMP APPLICATOR : MFX-3957.
 - 5.3 EXTRACTION TOOL : QXRT16.

P/N	CONTACT PLATING(MATING AREA)
SS24M2T	TIN PLATING OVER NICKEL.
SS24M2N	NICKEL PLATING OVER COPPERIZE.
SS24M2F	GOLD FLASH PLATING OVER NICKEL.
SS24M2G5	5 μ "GOLD PLATING OVER NICKEL.
SS24M2G10	10 μ "GOLD PLATING OVER NICKEL.
SS24M2G15	15 μ "GOLD PLATING OVER NICKEL.
SS24M2G30	30 μ "GOLD PLATING OVER NICKEL.

QUANTITY	PART NUMBER	DESCRIPTION	ITEM
MATERIALS LIST			
UNLESS OTHERWISE SPECIFIED			
1) All dimensions are in millimeters.			
2) Tolerances are as follows:			
1 PL DEC 20 30	Fractions ±1/64		
3 PL DEC 20 08	Angles ±1°		
3) Note reference = Δ			
MATERIAL SPECIFICATIONS:		CUSTOMER: Tommy Jul-16-18	
PROCESS SPECIFICATIONS:		DRAWN: Flan Jul-16-18	
NEXT ASSY:		CHECKED: Tod Jul-16-18	
		ENGINEER: Jul-16-18	
		APPROVAL: Tommy Jul-16-18	
PERFORMANCE SPECIFICATIONS:		SINE SYSTEMS SUPPLIER FOR	
MATERIALS LIST		SPECIFICATIONS AND PERFORMANCE DATA	
		THE MANUFACTURING CORPORATION, NO RIGHTS	
		OF REPRODUCTION ARE HEREBY ALL	
		MANUFACTURING VARIATIONS	
		SCALE: NONE	
		SHEET 1 OF 1	
		REVISION	
		A1	
		SS24M2XX	
		DWG NO:	
		SS24M2XX	
		REV: A1	
		SH: 1	
		OF: 1	