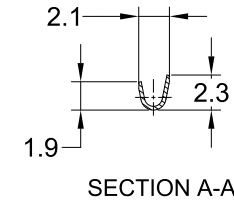
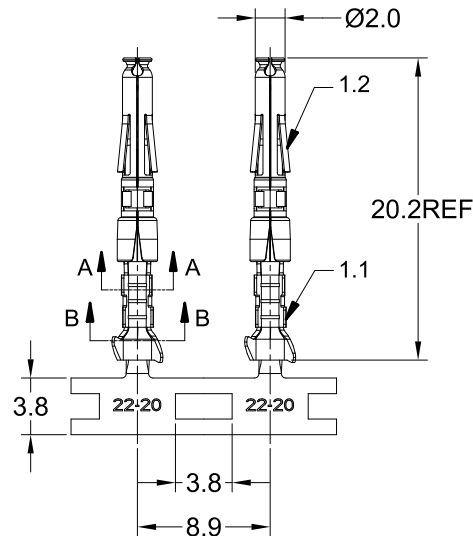
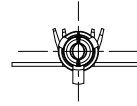


CONTACT ORIENTATION ON ROLL
(3000PCS/COIL)

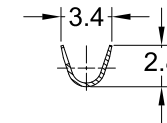
NOTES: (UNLESS OTHERWISE SPECIFIED)

1. MATERIAL:
 - 1.1. CONTACT BODY: COPPER ALLOY.
 - 1.2. OUTER SPRING: STAINLESS STEEL.
2. SPECIFICATIONS:
 - 2.1 CURRENT RATING: 5A MAX.
 - 2.2 TERMINATION TYPE: CRIMPING.
 - 2.3 WIRE RANGE: 18~22AWG.
 - 2.4 WIRE INSULATION DIA(MAX): \varnothing 2.6mm.
3. RoHS COMPLIANT.
4. ALL DIMENSIONS ARE FOR REFERENCE USE ONLY.
5. AVAILABLE TOOLS:
 - 5.1 HAND CRIMPER: MFX-3958.
 - 5.2 CRIMP APPLICATOR: MFX-3957.
 - 5.3 EXTRACTION TOOL: QXRT20.

P/N	CONTACT PLATING(MATING AREA)
SS20W2T	TIN PLATING OVER NICKEL.
SS20W2N	NICKEL PLATING OVER COPPERIZE.
SS20W2F	GOLD FLASH PLATING OVER NICKEL.
SS20W2G5	5 μ "GOLD PLATING OVER NICKEL.
SS20W2G10	10 μ "GOLD PLATING OVER NICKEL.
SS20W2G15	15 μ "GOLD PLATING OVER NICKEL.
SS20W2G30	30 μ "GOLD PLATING OVER NICKEL.



SECTION A-A



SECTION B-B

REVISIONS					
REV	ECO	DESCRIPTION	DATE	BY	APPR
A1	-	RELEASED DRAWING	Nov-9-17	Rookie	Tommy
A2	-	ADD THE G5 PART NUMBER	Jan-28-19	Blink	Tommy
A3	-	CHANGE HAND CRIMPER	Nov-8-19	Flan	Tommy
A4	C1735S	CHANGE STAINLESS STEEL HOOD	Oct-25-22	Ronald	Tommy
A5	-	UPDATE CONTACT ORIENTATION ON ROLL	May-18-23	Ronald	Tommy
A6	-	CHANGE THE WIRE RANGE	Aug-09-23	Ronald	Tommy

QUANTITY	PART NUMBER	DESCRIPTION	ITEM												
MATERIALS LIST															
UNLESS OTHERWISE SPECIFIED: 1) All dimensions are in metric (mm). 2) Tolerances are as follows: 1 PL DEC \pm 0.30 2 PL DEC \pm 0.15 3 PL DEC \pm 0.08 3) Note reference = Δ		<table border="1"> <thead> <tr> <th>SIGNATURES</th> <th>DATE</th> </tr> </thead> <tbody> <tr> <td>DRAWN: Ronald</td> <td>Aug-09-23</td> </tr> <tr> <td>CHECKED: Joe</td> <td>Aug-10-23</td> </tr> <tr> <td>ENGINEER:</td> <td></td> </tr> <tr> <td>APPROVAL: Tommy</td> <td>Aug-10-23</td> </tr> <tr> <td>CUSTOMER:</td> <td></td> </tr> </tbody> </table>		SIGNATURES	DATE	DRAWN: Ronald	Aug-09-23	CHECKED: Joe	Aug-10-23	ENGINEER:		APPROVAL: Tommy	Aug-10-23	CUSTOMER:	
SIGNATURES	DATE														
DRAWN: Ronald	Aug-09-23														
CHECKED: Joe	Aug-10-23														
ENGINEER:															
APPROVAL: Tommy	Aug-10-23														
CUSTOMER:															
MATERIAL SPECIFICATIONS:															
PROCESS SPECIFICATIONS:		Sine Systems - www.amphenol-sine.com 44724 Morley Drive Clinton Township, MI 48036													
NEXT ASSY:		ECO-MATE, SOCKET CONTACT, STAMPED, 18-22AWG, SIZE 20													
		<table border="1"> <thead> <tr> <th>SIZE</th> <th>TYPE</th> <th>DWG NO:</th> <th>REVISION</th> </tr> </thead> <tbody> <tr> <td>B</td> <td>C-</td> <td>SS20W2xx</td> <td>A6</td> </tr> </tbody> </table>	SIZE	TYPE	DWG NO:	REVISION	B	C-	SS20W2xx	A6					
SIZE	TYPE	DWG NO:	REVISION												
B	C-	SS20W2xx	A6												
		SCALE: NONE	SHEET 1 OF 1												

TITLE: ECO-MATE SOCKET CONTACT, STAMPED, 18-22 AWG, SIZE 20
DWG NO.: SS20W2xx
REV: A6
SH: 1
OF: 1