

# SS1A - SS1J

**PRV : 50 - 600 Volts**  
**Io : 1.0 Ampere**

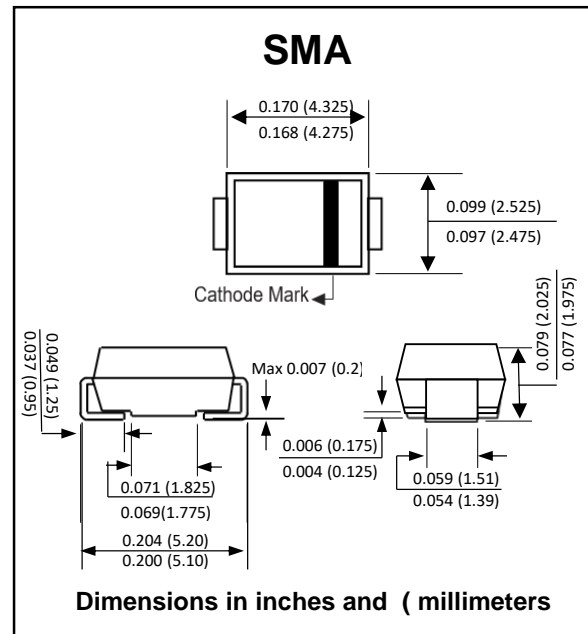
## FEATURES :

- \* High current capability
- \* High surge current capability
- \* High reliability
- \* Low reverse current
- \* Low forward voltage drop
- \* Super fast recovery time
- \* Pb / RoHS Free

## MECHANICAL DATA :

- \* Case : SMA Molded plastic
- \* Epoxy : UL94V-O rate flame retardant
- \* Lead : Lead Formed for Surface Mount
- \* Polarity : Color band denotes cathode end
- \* Mounting position : Any
- \* Weight : 0.067 gram

## SURFACE MOUNT SUPER FAST RECTIFIERS



## MAXIMUM RATINGS AND ELECTRICAL CHARACTERISTICS

Rating at 25 °C ambient temperature unless otherwise specified.  
 Single phase, half wave, 60 Hz, resistive or inductive load.  
 For capacitive load, derate current by 20%.

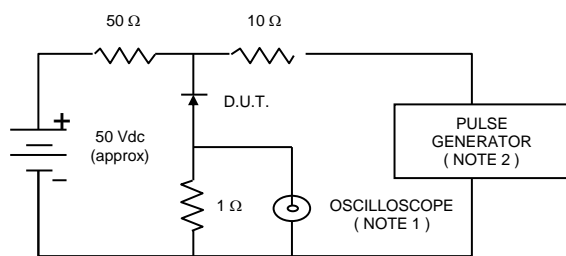
RATING	SYMBOL	SS1A	SS1B	SS1C	SS1D	SS1E	SS1G	SS1J	UNIT
Maximum Recurrent Peak Reverse Voltage	V <sub>RRM</sub>	50	100	150	200	300	400	600	V
Maximum RMS Voltage	V <sub>RMS</sub>	35	70	105	140	210	280	420	V
Maximum DC Blocking Voltage	V <sub>DC</sub>	50	100	150	200	300	400	600	V
Maximum Average Forward Current Ta = 55 °C	I <sub>F(AV)</sub>	1.0							A
Maximum Peak Forward Surge Current 8.3 ms. Single half sine wave Superimposed on rated load (JEDEC Method)	I <sub>FSM</sub>	30							A
Maximum Peak Forward Voltage at I <sub>F</sub> = 1.0 A	V <sub>F</sub>	0.95				1.7			V
Maximum DC Reverse Current Ta = 25 °C at Rated DC Blocking Voltage Ta = 100 °C	I <sub>R</sub>	5.0							μA
	I <sub>R(H)</sub>	100							
Maximum Reverse Recovery Time ( Note 1 )	T <sub>rr</sub>	35							ns
Typical Junction Capacitance ( Note 2 )	C <sub>J</sub>	50							pf
Junction Temperature Range	T <sub>J</sub>	- 65 to + 150							°C
Storage Temperature Range	T <sub>STG</sub>	- 65 to + 150							°C

### Notes :

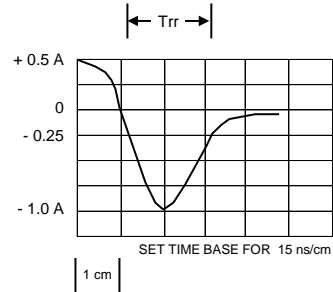
- ( 1 ) Reverse Recovery Test Conditions : I<sub>F</sub> = 0.5 A, I<sub>R</sub> = 1.0 A, I<sub>rr</sub> = 0.25 A.
- ( 2 ) Measured at 1.0 MHz and applied reverse voltage of 4.0 V<sub>DC</sub>

## RATING AND CHARACTERISTIC CURVES ( SS1A - SS1J )

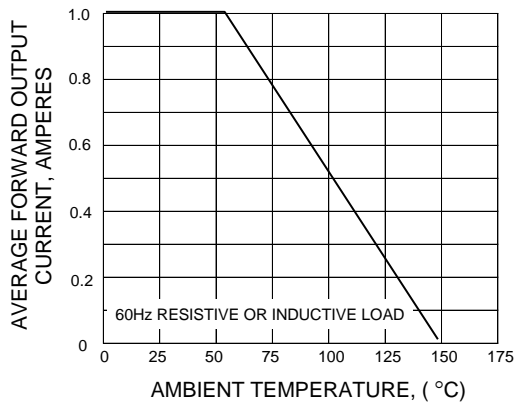
**FIG.1 - REVERSE RECOVERY TIME CHARACTERISTIC AND TEST CIRCUIT DIAGRAM**



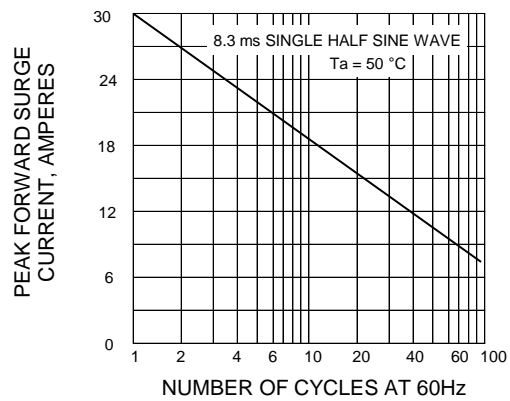
- NOTES : 1. Rise Time = 7 ns max., Input Impedance = 1 megaohm, 22 pF.  
 2. Rise time = 10 ns max., Source Impedance = 50 ohms.  
 3. All Resistors = Non-inductive Types.



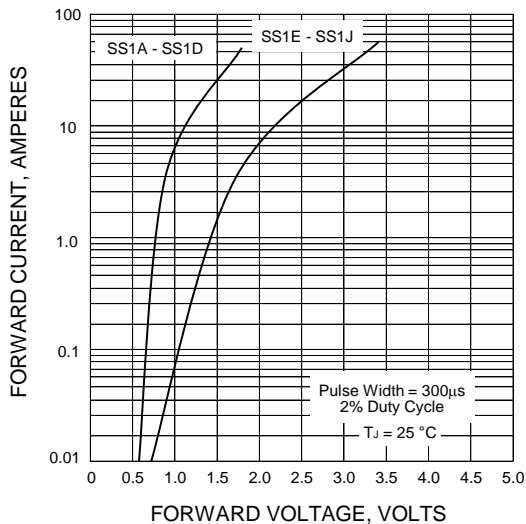
**FIG.2 - DERATING CURVE FOR OUTPUT RECTIFIED CURRENT**



**FIG.3 - MAXIMUM NON-REPETITIVE PEAK FORWARD SURGE CURRENT**



**FIG.4 - TYPICAL FORWARD CHARACTERISTICS**



**FIG.5 - TYPICAL VALUE CHARACTERISTICS**

