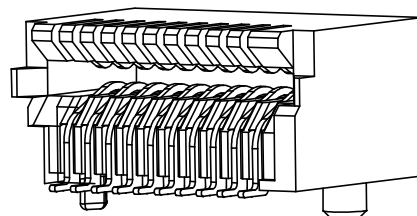
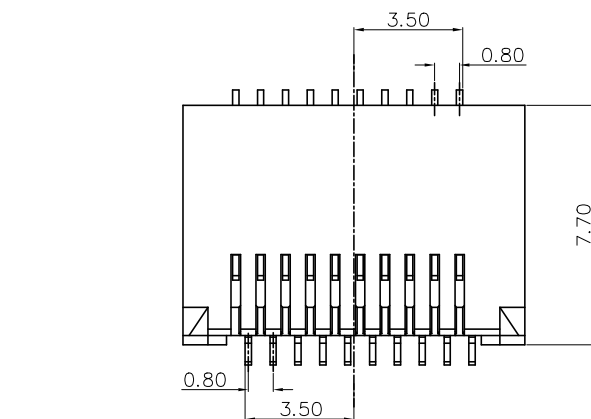
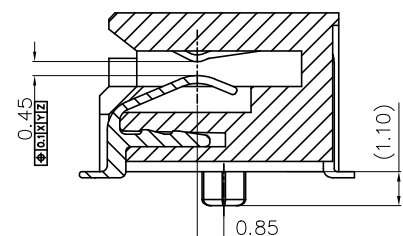
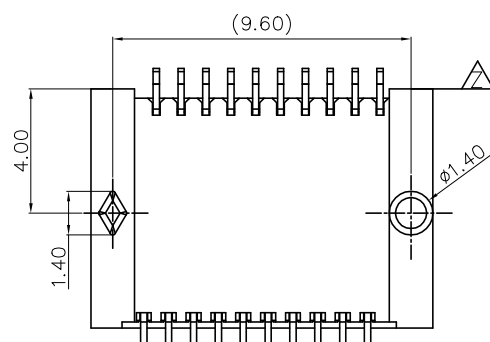
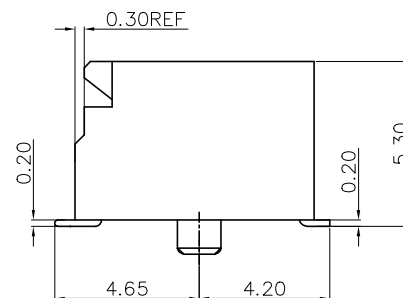
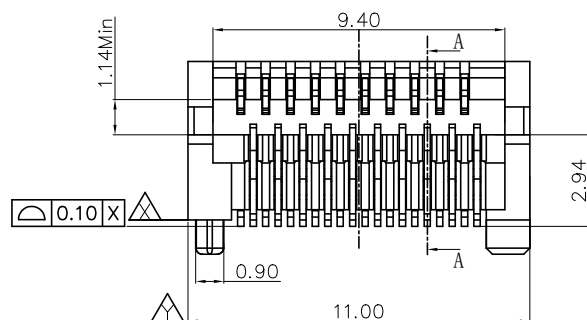


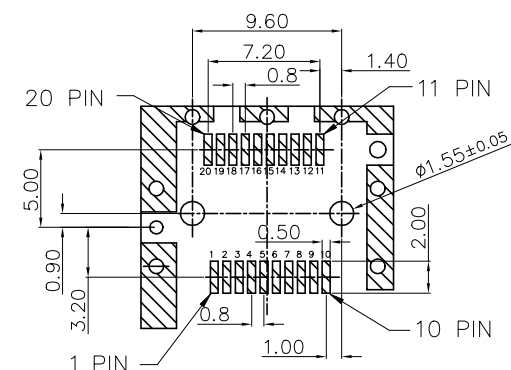
REVISION RECORD		
REV	DESCRIPTION	DRFT
10	A-release	Roy 11/12/2014





NOTE:  
MATERIAL:  
1. TERMINAL: COPPER ALLOY.  
2. HOUSING: LCP UL 94V-0\BLACK.  
PLATING:  
1. 1.27um MIN. Ni UNDERPLATING.  
2. 0.76um MIN. MATTE TIN PLATING ON SMT AREA.  
3. 0.38um MIN. GOLD PLATING ON CONTACT AREA.  
MECHANICAL:  
1. DURABILITY: 100 CYCLES MIN.  
2. INSERTION AND EXTRACTION FORCE: 40N MAX & 11.5N MAX.  
ENVIRONMENTAL:  
1. CONTACT RESISTANCE: 20 MILLIOHMS MAX INITIAL.  
2. DIELECTRIC WITHSTANDING VOLTAGE: 300V AC/MIN.  
3. OPERATION: -40°C~+85°C.  
4. STORAGE: -55°C~+105°C.  
5. REFLOW SOLDERING TEMPERATURE: 255°C~265°C(5~10 SECONDS).  
6. ROHS COMPLIANT.



A-A SECTION



PC BOARD LAYOUT  
COMPONENT SIDE SHOWN

DETACHED LISTS	<div>← MM (INCH) →</div>		DFTO Roy	DATE 10/08/2014		RoHS Compliant		
	TOLERANCES EXCEPT AS NOTED		CHKD Victor	DATE 10/08/2014				
	MM		APPVL Victor	DATE 10/08/2014	TITLE SFP+ 1X1 CONNECTOR			
	.0 ± 0.20	±	MATERIAL :					
	.00 ± 0.15	±	QT'Y :		DRAWING NO. SFPPC-1000-L		SIZE	REV
	.000 ± 0.075	±	FINISH :		/PART NO. SFPPC-1000-L		A3	10
	ANGLES ± 0.5°		SCALE : 1:1		DO NOT SCALE DRAWING		SHEET	1 OF 1
								
	THIRD ANGLE PROJECTION							