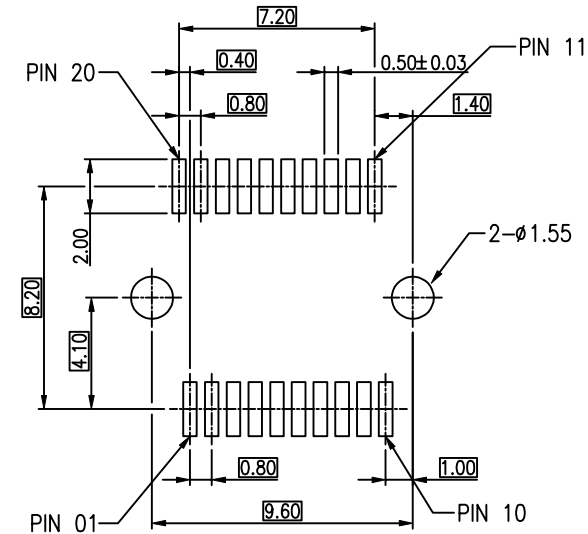
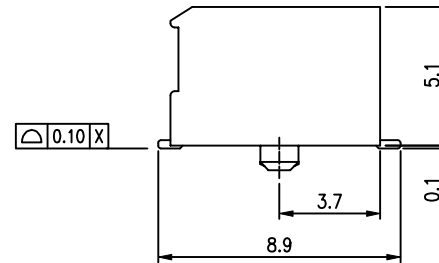
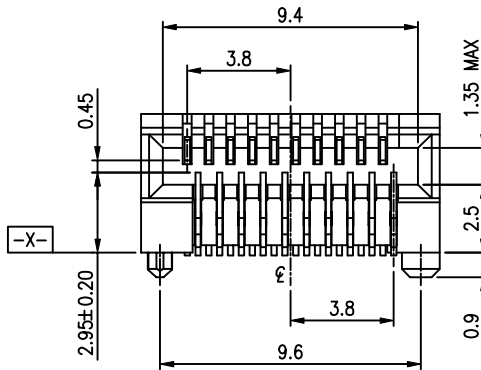
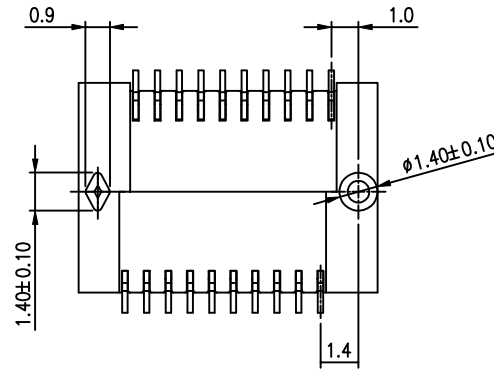
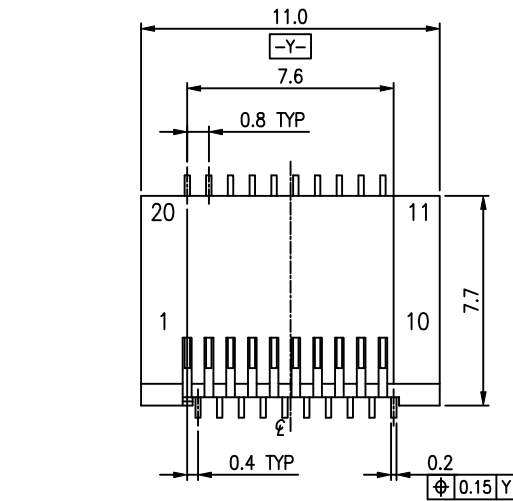


REVISION RECORD		
REV	DESCRIPTION	DRFT
10	NEW RELEASE	Alice 02/24/2010



### RECOMMENDED PCB LAYOUT

Tolerance:± 0.05

#### Material:

1. Insulator: Glass-Reinforced Thermoplastic, UL 94V-0, Color: Black.

2. Contact: Copper Alloy.

Contact Plating: Gold Plating on Contact Area.

Over Nickel underplating overall.

3. ROHS Compliant

4. Durability: 250 cycles min.

#### Electrical:

1. Voltage Rating: 100VAC.

2. Current Rating: 1A.

3. Contact Resistance: 40 milliohms Max.

4. Dielectric Withstanding Voltage: 500VAC Min.



5. Insulation Resistance: 1000 Megaohms Min.

#### Environmental:

1. Temperature Range: -40°C to +85°C.

#### PART NO.:

PART NUMBER	REV	GOLD PLATING
SFPC-2001-L	A	30u"

DETACHED LISTS	<div>MM (INCH)</div>		DFTO Alice	DATE 02/24/2010	 <b>Pulse</b> A TECHNOLOGIT COMPANY	RoHS Compliant		
	TOLERANCES EXCEPT AS NOTED		CHKD Ashelly	DATE 03/03/2010				
	MM		APPVL TimLee	DATE 03/03/2010	TITLE  SFP CONNECTOR			
	.0 ± 0.20	±	MATERIAL :					
	.00 ± 0.15	±						
	.000 ± 0.075	±						
	ANGLES ± 0.5°		QT'Y :	DRAWING NO. SFPC-2001-L		SIZE A3	REV 10	
			FINISH :					
	THIRD ANGLE PROJECTION		SCALE : 5:1		DO NOT SCALE DRAWING		SHEET 1	OF 1