

SCNRF - 6AAN - P1FS

SUNTSU

CONNECTOR

RF

MAXIMUM FREQUENCY
6 GHz

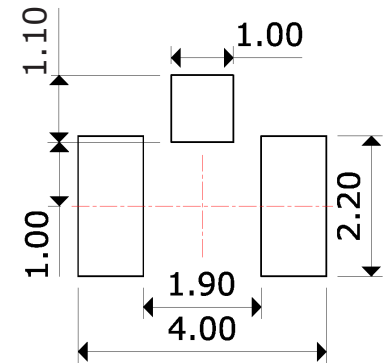
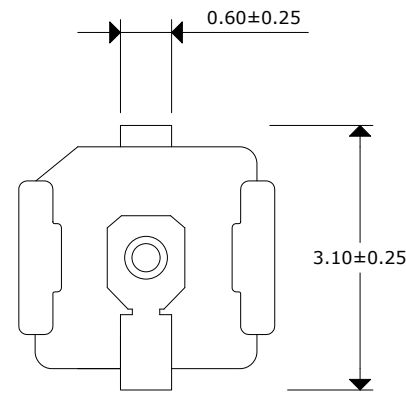
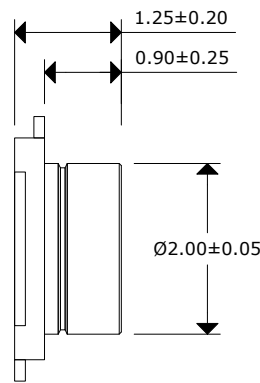
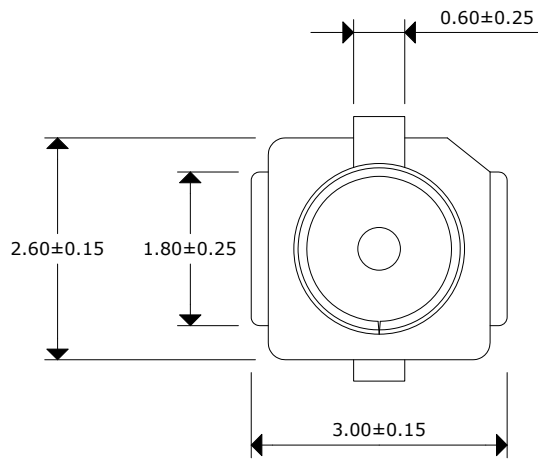
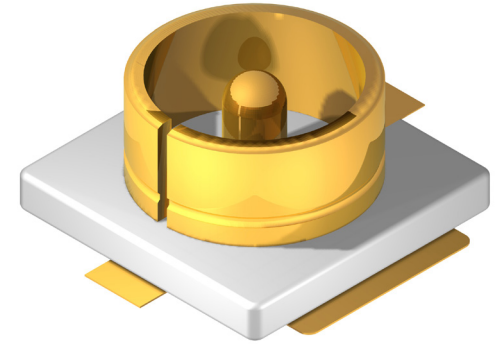
IMPEDANCE
50Ω

MOUNT TYPE
Panel

CONNECTOR TYPE
I-PEX

GENDER
Female

ORIENTATION
Straight



**Recommended
Mounting
Layout**

Impedance: 50Ω
 Frequency Range: 0GHz - 6GHz
 Voltage Standing Wave Ratio (VSWR): 1.5 MAX
 Working Voltage: 200 Vrms MAX
 Dielectric Withstanding Voltage: 200 Vrms MIN
 Operating Temperature: -40°C to 90°C
 Center Contact Resistance: 20 mΩ MAX
 Outer Contact Resistance: 10 mΩ MAX
 Insulation Resistance: 500 mΩ MIN



IPEX PANEL MOUNT
FEMALE STRAIGHT CONNECTOR

Document History				Part No.	REV.	Drawn		Page	
Edits Made	Date	Edited By	Approved By						
Initial Release	02/02/2021	B. Gibbons	KH Mun	SCNRF-6AAN-P1FS	A	B. Gibbons	02/02/2021	1 / 1	
					Drawing No.	SCALE	Checked		
					Tolerance	UNIT	Approved		
					mm				