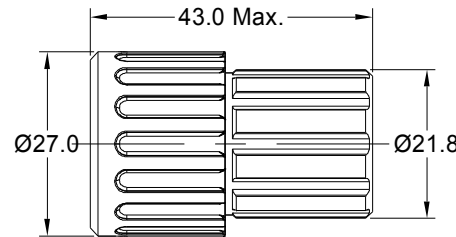
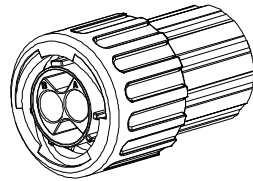
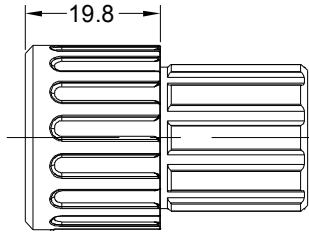
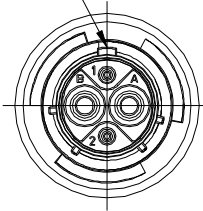
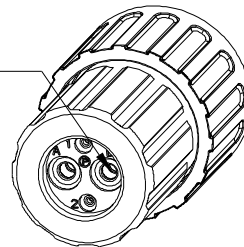


| REVISIONS | | | | | |
|-----------|-----|--------------------------------|-------------|-------|-------|
| REV | ECO | DESCRIPTION | DATE | BY | APPR |
| A1 | - | FIRST RELEASED | Jun.15.2016 | Drack | Tommy |
| A2 | - | UPDATE NOTES | Jun-20-17 | Nick | Tommy |
| A3 | - | UPDATE DRAWING | Mar-19-2018 | White | Tommy |
| A4 | - | UPDATE DESCRIPTION AND VOLTAGE | SEP-16-2021 | BLINK | TOMMY |

MASTER KEYWAY



SEALING PLUGS CAN BE PURCHASED SEPARATELY



NOTES : (UNLESS OTHERWISE SPECIFIED)

- MATERIAL :
SHELL : THERMOPLASTIC , UL94 V-0.
INSERT : THERMOPLASTIC , UL94 V-0.
COUPLING NUT : THERMOPLASTIC , UL94 V-0.
O-RING : NBR OR SILICONE RUBBER.
WASHER : SILICONE RUBBER.
END CAP : THERMOPLASTIC , UL94 V-0.
PLASTIC RING: THERMOPLASTIC , UL94 V-0.
WIRE SEAL : SILICONE RUBBER.
- SPECIFICATIONS :
2.1, RATED CURRENT : 2.5mm CONTACT: 23A (MAX).
20# CONTACT: 5A (MAX).
2.2, RATED VOLTAGE : 500V(AC/DC).
2.3, OPERATING TEMPERATURE : SEE TABLE.
2.4, DIELECTRIC WITHSTANDING VOLTAGE : LESS THAN
2 MILLIAMPS CURRENT LEAKAGE@2000 VOLTS AC.
2.5, INSULATION RESISTANCE : 5000 MEGOHMS MIN.
2.6, IP-CLASS : IP67 AND IP69K IN THE MATED CONDITION,
WIRE SEALS FULLY POPULATED.
2.7, MATING CYCLES DURABILITY : 500 CYCLES MIN.
2.8, ROHS COMPLIANT.
- SUITABLE CONTACTS : 2.5mm & 20# CONTACT.
- ALL DIMENSIONS ARE FOR REFERENCE USE ONLY.

| CONTACT SIZE | MIN. INSUL O.D. | MAX. INSUL O.D. | WIRE RANGE |
|--------------|-----------------|-----------------|------------|
| 2.5mm | Ø3.3mm | Ø4.3mm | 14 - 12AWG |
| 20# | Ø1.6mm | Ø2.6mm | 30 - 20AWG |

| KEY | PART NUMBER | |
|-----|----------------|------------------|
| | -40°C ~ 105°C | -40°C ~ 125°C |
| N | RTS6BS12N2PHEC | RTS6BS12N2PHEC03 |

| QUANTITY | PART NUMBER | DESCRIPTION | ITEM |
|--|-------------|---|---|
| MATERIALS LIST | | | |
| UNLESS OTHERWISE SPECIFIED 1) All dimensions are in metric(mm). 2) Tolerances are as follows: 1 PL DEC ±0.30 Fractions ±1/64 2 PL DEC ±0.15 Angles ±1° 3 PL DEC ±0.08 3) Note reference = | | SIGNATURES DATE DRAWN: BLINK SEP-16-2021 CHECKED: ORION SEP-17-2021 ENGINEER: APPROVAL: TOMMY SEP-16-2021 MATERIAL SPECIFICATIONS: CUSTOMER: THIS DRAWING IS SUPPLIED FOR INFORMATION ONLY. DESIGN FEATURES, SPECIFICATIONS AND PERFORMANCE DATA SHOWN HEREON ARE THE PROPERTY OF THE AMPHENOL CORPORATION. NO RIGHTS OF REPRODUCTION ARE IMPLIED. ALL DIMENSIONS ARE SUBJECT TO NORMAL MANUFACTURING VARIATIONS. | Sine Systems - www.amphenol-sine.com 44724 Morley Drive Clinton Township, MI 48036 EcoMate Aquarius, PLUG, END CAP, 4 POS(2+2), PIN CONTACT, SIZE 12 SIZE TYPE DWG NO. REVISION B C- RTS6BS12*2PHECxx A4 |
| NEXT ASSY: | | SCALE NONE | SHEET 1 OF 1 |

TITLE: EcoMate Aquarius, PLUG, END CAP, 4 POS(2+2), PIN CONTACT, SIZE 12
 DWG NO.: RTS6BS12*2PHECxx
 REV: A4
 SH: 1
 OF: 1