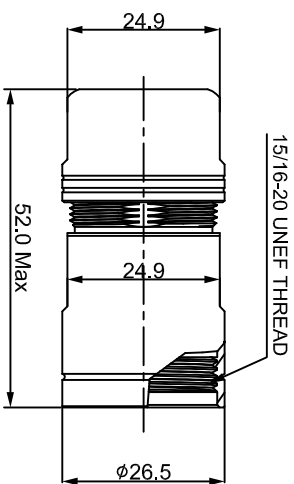
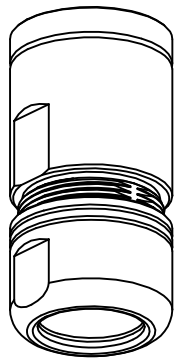
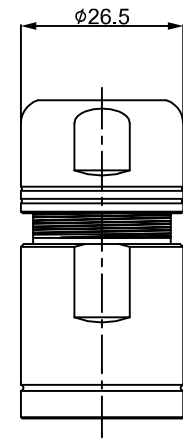
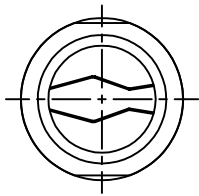


REVISIONS				
REV	ECO	DESCRIPTION	DATE	BY APPR
B1	-	RELEASED DRAWING	JUL-24-2015	Ben Tommy
B2	-	UPDATE THE CABLE RANGE	2016-12-16	FLAN Tommy



P/N	SHIELDING RING	CABLE RANGE
RT0S-16CG-NS1	WITH	φ10.0-φ14.0mm
RT0S-16CG-NS2	WITH	φ13.5-φ17.0mm

- NOTES : (UNLESS OTHERWISE SPECIFIED)
1. MATERIAL :
- 1.1. NUT : ZINC ALLOY, NICKEL PLATED.
 - 1.2. CLAMP INSERT : THERMOPLASTIC U194 V-0.
 - 1.3. EMI SHIELDING RING : STAINLESS STEEL.
 - 1.4. BACK SHELL : ZINC ALLOY, NICKEL PLATED.
 - 1.5. O-RING : SILICONE RUBBER.
 - 1.6. GROMMET : RUBBER.
2. ROHS COMPLIANT.
3. ALL DIMENSIONS ARE FOR REFERENCE USE ONLY.

QUANTITY	PART NUMBER	DESCRIPTION	ITEM

UNLESS OTHERWISE SPECIFIED			
1) All dimensions are in millimeters.	DRAWN	Ben	2016-12-16
2) Tolerances are as follows:	CHECKER	10d	2016-12-16
1 Pt. DEC 240.30 Fractions 1/16"	ENGINEER	Tommy	2016-12-16
3 Pt. DEC 240.08 Angles 1°	APPROVAL	Tommy	2016-12-16
3) Note reference =	CUSTOMER		

PROCESS SPECIFICATIONS:		MATERIAL SPECIFICATIONS:		FINISH SPECIFICATIONS:		SIZE		SCALE	
						B	C-	NONE	NONE
NEXT ASSY:		MATERIAL SPECIFICATIONS:		FINISH SPECIFICATIONS:		SIZE		SCALE	

Amphenol
 Sine Systems - www.amphenol-sine.com
 44724 Morley Drive
 Clinton Township, MI 48036