

RMV | Disks for retaining magnets

Steel or stainless steel

METRIC

INOX
STAINLESS
STEEL

RoHS

STANDARD EXECUTION

- **RMV-ST**: zinc-plated steel.
- **RMV-NI**: magnetic stainless steel.

FEATURES AND APPLICATIONS

RMV disks serve to be coupled to different types of magnets where the attraction must occur between the retaining magnet and the surfaces of non-magnetic material.

They can be fixed with countersunk screws (DIN 7991).

RMY | Disks for retaining magnets

adhesive tape

METRIC

RoHS

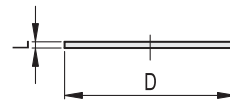
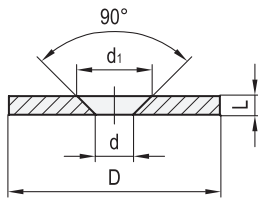
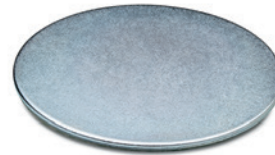
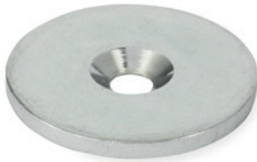
STANDARD EXECUTIONS

- With adhesive tape
- **RMY**: zinc-plated steel.
- **RMY-WT**: RAL 9003 white lacquered steel.

FEATURES AND APPLICATIONS

RMY disks are used to be coupled to different types of retaining magnets.

For a better adhesion of the adhesive tape, make sure that the surface on which it will be applied is perfectly clean.



RMV-ST

METRIC

Code	Description	D	d	L	d1	△
503301	RMV-12-A-ST	12 ±0.1	4 +0.3	2	6.5 -0.2/+0.5	1
503303	RMV-17-A-ST	17 ±0.1	6 +0.3	2	8.5 +0.5	3
503305	RMV-27-A-ST	27 ±0.2	5.5 +1	3	11 +0.5	12
503307	RMV-34-A-ST	34 +0.3/+0.7	6 +0.3	3	11 +0.5	20
503309	RMV-45-A-ST	45 +0.1/+0.5	5.5 +0.3	2	11 +0.5	36
503311	RMV-64-A-ST	64 ±0.3	6 +0.3	3	11 +0.5	74

RMY

METRIC

Code	Description	D	L	△
503261	RMY-20	20	2	5
503266	RMY-30	30	2	18
503271	RMY-40	40	2	25
503276	RMY-60	60	2.5	37

RMV-NI

INOX STAINLESS STEEL METRIC

Code	Description	D	d	L	d1	△
503315	RMV-27-A-NI	27 ±0.1/+0.5	5.5 +1	3	11 +0.05	12
503313	RMV-45-A-NI	45 ±0.2	6 ±0.3	2	8.5 +0.05	36

RMY-WT

METRIC

Code	Description	D	L	△
503263	RMY-20-WT	20	2	5
503267	RMY-30-WT	30	2	18
503273	RMY-40-WT	40	2	25
503277	RMY-60-WT	60	2.5	37