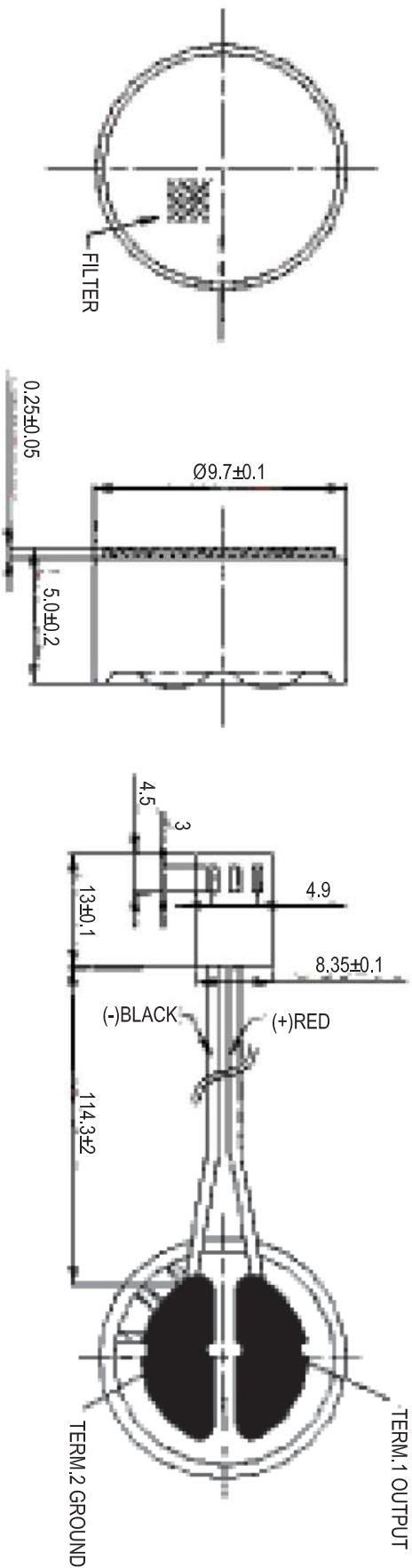
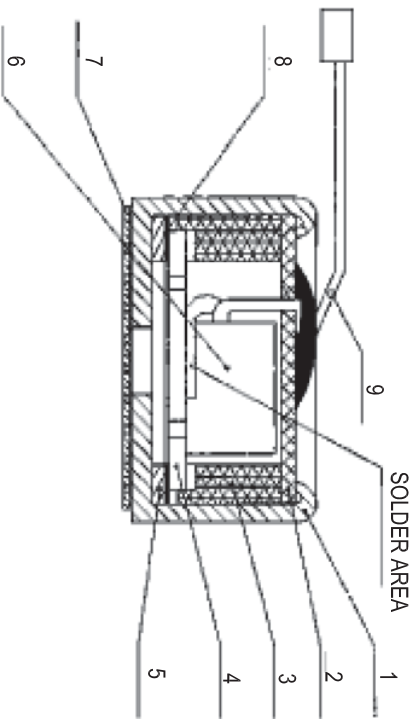


1. DIMENSIONAL DRAWING:



2. STRUCTURE



NO.	PART NAME	MATERIAL	NO.	PART NAME	MATERIAL
1	CASE	ALUMINUM	6	FET	K596
2	PCB	BAKELITE EPOXY	7	FILTER	NON-FIBRECORD
3	CHAMBER	ABS	8	SPACER	POLYESTER
4	BACK PLATE	H62	9	WIRE	UL1007 26#(3PIN WIRE)
5	DIAPHRAGM	50A H62			

NOTE: ALL DIMS ARE IN mm

08-250	07/11/08	A	CHANGED THE DRAWING TO NEW PRINT			
ECN#	DATE	SYM	REVISION RECORD			
			CP	JY	ANG.	N/A
			AUTH	BY		

PROJECT ID	ELECTRET CONDENSER MICROPHONE-ROHS COMPLIANT					
SCALE	N/A	TITLE	ELECTRET CONDENSER MICROPHONE-ROHS COMPLIANT			
TOLERANCE	EXCEPT AS NOTED	DR.	Jln	DATE	01/07/06	REF.
DEC. INCHES	N/A	CK.	JY	PRE-DRAWING	MI	P/N: REM-54F-60-ASSY-NL
				SIZE	F	2680
						REV. A

RDI Research Develop Innovate
 RDI, Inc. 400 Columbus Avenue Valhalla, NY 10595

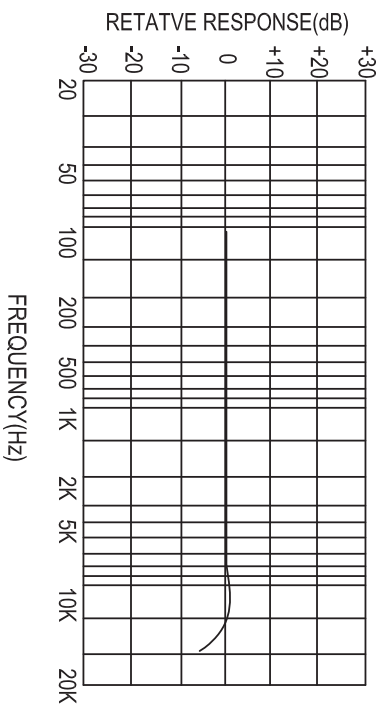
THIS DOCUMENT IS OWNED BY, AND THE INFORMATION CONTAINED IN IT IS PROPRIETARY TO, RDI. BY RECEIPT HEREOF THE HOLDER AGREES NOT TO USE THE INFORMATION AND NOT TO DISCLOSE IT TO ANY THIRD PARTY, NOR REPRODUCE THIS DOCUMENT WITHOUT THE WRITTEN CONSENT OF RDI, AND AGREES TO RETURN THIS DOCUMENT UPON REQUEST.

3. ELECTRICAL SPECIFICATIONS

TEST CONDITION (Vs=1.5V,RL=2.2KOHM TEMP=22±3°C,R.H = 50~70%)

ITEM	SYMBOL	TEST CONDITION	MIN.	STANDARD	MAX.	UNIT
SENSITIVITY ***	SENS	f = 1KHZ	-63	-60	-57	dB 0dB=1V/lubar
OMNI-DIRECTIONAL						
DIRECTIVITY						
IMPEDANCE	Zout				2.2	Kohm
MAX. SOUND PRESSURE LEVEL	S.P.L				100	dB
OPERATION VOLTAGE	Vs		1.0	1.5	10	V
OPERATION CONSUMPTION	I				0.45	mA
SENSITIVITY REDUCTION	ΔS	f=1KHZ Vs=1.5~1.0V			ΔS	dB 0dB=1V/lubar
S/N RATIO	S/A	f=1KHZ	60			dB 0dB=1V/lubar

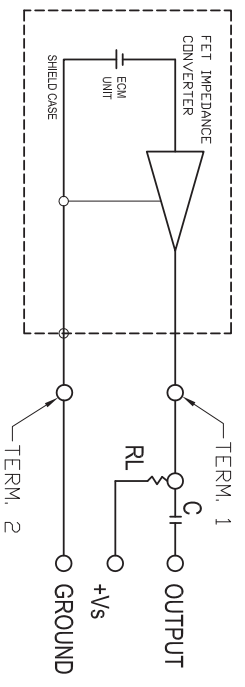
5. TYPICAL FREQUENCY RESPONSE CURVE:



6. AMBIENT CONDITION:

- (1) OPERATING CONDITION: AMBIENT TEMPERATURE: -10°C~+45°C
RELATIVE HUMIDITY: ≤80%
- (2) STORAGE CONDITION: AMBIENT TEMPERATURE: -25°C~+60°C
RELATIVE HUMIDITY: ≤75%

4. MEASUREMENT CIRCUIT:



NOTE: ALL DIMS ARE IN mm

08-250	07/11/08	A	CHANGED THE DRAWING TO NEW PRINT	CP	JY	DEC. MILLIMETERS N/A	DR. Jln	DATE 01/07/06	REF. P/N: REM-54F-60-ASSY-NL	2	DF	4
ECN#	DATE	SYM	REVISION RECD	AUTH	BY	SCALE N/A	DR. JY	PRE-MI	DRAWING NO. 2680	REV. A	SIZE	F



Research Develop Innovate

RDI, Inc. 400 Columbus Avenue Valhalla, NY 10595

TITLE: ELECTRET CONDENSER MICROPHONE-ROHS COMPLIANT
 THIS DOCUMENT IS OWNED BY, AND THE INFORMATION CONTAINED IN IT IS PROPRIETARY TO, RDI. BY RECEIPT HEREOF THE HOLDER AGREES NOT TO USE THE INFORMATION AND NOT TO DISCLOSE IT TO ANY THIRD PARTY, NOR REPRODUCE THIS DOCUMENT WITHOUT THE WRITTEN CONSENT OF RDI, AND AGREES TO RETURN THIS DOCUMENT FORTHWITH UPON REQUEST.

7. MECHANICAL CHARACTERISTICS

WEIGHT	LESS THAN: 1.0g
TERMINAL MECHANICAL STRENGTH	TO BE NO INTERFERE IN OPERATION AFTER PULLED THE TERMINAL WITH 1kg STRENGTH FOR 1 MINUTE.

8. RELIABILITY TESTS

SOLDERING HEAT SHOCK	TO BE NO INTERFERE IN OPERATION AFTER SOLDERING HEAT SHOCK. TEMPERATURE 320±20°C FOR 1-3 SECONDS. SENSITIVITY TO BE WITHIN +/-3dB FORM INITIAL SENSITIVITY
VIBRATION TEST	TO BE NO INTERFERE IN OPERATION AFTER VIBRATION 10Hz TO 56Hz FOR 1 MINUTE FULL AMPLITUDE 0.56mm. SENSITIVITY TO BE WITHIN +/-3dB FORM INITIAL SENSITIVITY
DROP TEST	TO BE NO INTERFERE IN OPERATION AFTER DROPPED TO CONCRETE FLOOR EACH ONE TIME FROM 1 METER HEIGHT AT THREE DIRECTIONS IN STATE OF PACKING. SENSITIVITY TO BE WITHIN +/-3dB FORM INITIAL SENSITIVITY
HIGH TEMPERATURE TEST	AFTER EXPOSURE AT 70±2°C FOR 48 HOURS, SENSITIVITY TO BE WITHIN ±3dB FROM INITIAL SENSITIVITY. (THE MEASUREMENT TO BE DONE AFTER 3 HOURS OF CONDITIONING AT 20°C)
LOW TEMPERATURE TEST	AFTER EXPOSURE AT 40°C FOR 48 HOURS, SENSITIVITY TO BE WITHIN ±3dB FROM INITIAL SENSITIVITY. (THE MEASUREMENT TO BE DONE AFTER 3 HOURS OF CONDITIONING AT 20°C)
HUMIDITY TEST	AFTER EXPOSURE AT 40%±2°C AND 90-95% RELATIVE HUMIDITY FOR 48 HOURS, SENSITIVITY TO BE WITHIN ±3dB FROM INITIAL SENSITIVITY. (THE MEASUREMENT TO BE DONE AFTER 3 HOURS OF CONDITIONING AT 20°C)

9. CAUTIONS

- 1) THE TEMPERATURE OF THE WORKING SURFACE OF THE SOLDERING COPPER SHALL BE BELOW 320±20°C
- 2) ECM SHALL BE SOLDERED FIXED ON THE METAL BLOCK(HEAT SINK) WHICH HAS THE HIGHER RADIATION EFFECTS SAID HEAT SINK SHALL CONTACT WITH EACH OF ECM.
- 3) THE SOLDERING TIME FOR EACH TERMINAL SHALL BE 1-3 SECONDS
- 4) ECM MAY EASILY DESTROYED BY THE STATIC ELECTRICITY, AND THE COUNTERMEASURE FOR ELIMINATION THE STATIC ELECTRICITY(THE GROUND OR SOLDERING COPPING COPPER, FOR WORKTABLE AND FOR HUMAN BODY) SHALL BE EXECUTED

TEMPERATURE CYCLE TEST	AFTER EXPOSURE AT -20±3°C FOR 2 HOURS, AT 40°C FOR 2 HOURS, WITH 10 CYCLES, SENSITIVITY TO BE WITHIN ±3dB FROM INITIAL SENSITIVITY. (THE MEASUREMENT TO BE DONE AFTER 3 HOURS OF CONDITIONING AT 20°C)
------------------------	--

NOTE: ALL DIMS ARE IN mm

08-250	07/11/08	A	CHANGED THE DRAWING TO NEW PRINT
ECN#	DATE	SYM	REVISION RECDRD

CP	JY	BY	ANG.
AUTH	BY	ANG.	N/A



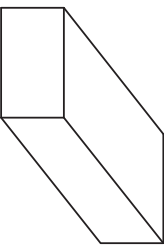
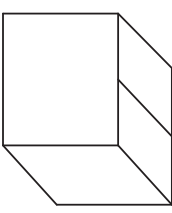
Research Develop Innovate

RDI, Inc. 400 Columbus Avenue Valhalla, NY 10595


PROJECTIDN	TITLE
SCALE	ELECTRET CONDENSER MICROPHONE-ROHS COMPLIANT
TOLERANCE	DR
EXCEPT AS NOTED	Jln
DEC. INCHES	DATE
N/A	01/07/06
PRE-CK	REF.
JY	P/N: REM-54F-60-ASSY-NL
MI	DRAWING NO.
F	2680
A	SIZE
REV.	3 OF 4
REV.	4

THIS DOCUMENT IS OWNED BY, AND THE INFORMATION CONTAINED IN IT IS PROPRIETARY TO, RDI. BY RECEIPT HEREOF THE HOLDER AGREES NOT TO USE THE INFORMATION AND NOT TO DISCLOSE IT TO ANY THIRD PARTY, NOR REPRODUCE THIS DOCUMENT WITHOUT THE WRITTEN CONSENT OF RDI, AND AGREES TO RETURN THIS DOCUMENT FORTHWITH UPON REQUEST.

10. PACKING SPECIFICATION:

	DRAWING	QTY(PCS)	SIZE(mm)	REMARK
PACKING		500	212.5X103X48	PAPER
OUTER BOX		5,000 (10X500)	230X230X260	PAPER

NOTE: ALL DIMS ARE IN mm

				<p>Research Develop Innovate</p> <p>RD1, Inc. 400 Columbus Avenue Valhalla, NY 10595</p>	
PROJECTION	N/A	TITLE	ELECTRET CONDENSER MICROPHONE-ROHS COMPLIANT		
SCALE	N/A	DR	DATE	REF.	
TOLERANCE EXCEPT AS NOTED	N/A	Jln	01/07/06	P/N: REM-54F-60-ASSY-NL	4 OF 4
DEC. INCHES	N/A	CK	PRE-MI	DRAWING NO. 2680	REV. A
DEC. MILLIMETERS	N/A	JY			
ANG.	N/A	<p>THIS DOCUMENT IS OWNED BY, AND THE INFORMATION CONTAINED IN IT IS PROPRIETARY TO, RD1. BY RECEIPT HEREOF THE HOLDER AGREES NOT TO USE THE INFORMATION AND NOT TO DISCLOSE IT TO ANY THIRD PARTY, NOR REPRODUCE THIS DOCUMENT WITHOUT THE WRITTEN CONSENT OF RD1, AND AGREES TO RETURN THIS DOCUMENT FORTHWITH UPON REQUEST.</p>			

08-250 07/11/08 A CHANGED THE DRAWING TO NEW PRINT

ECN# DATE SYM REVISION RECD

AUTH BY CP JY