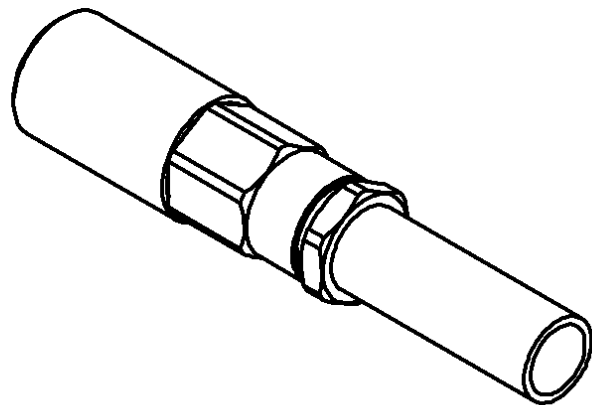
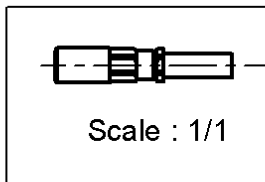
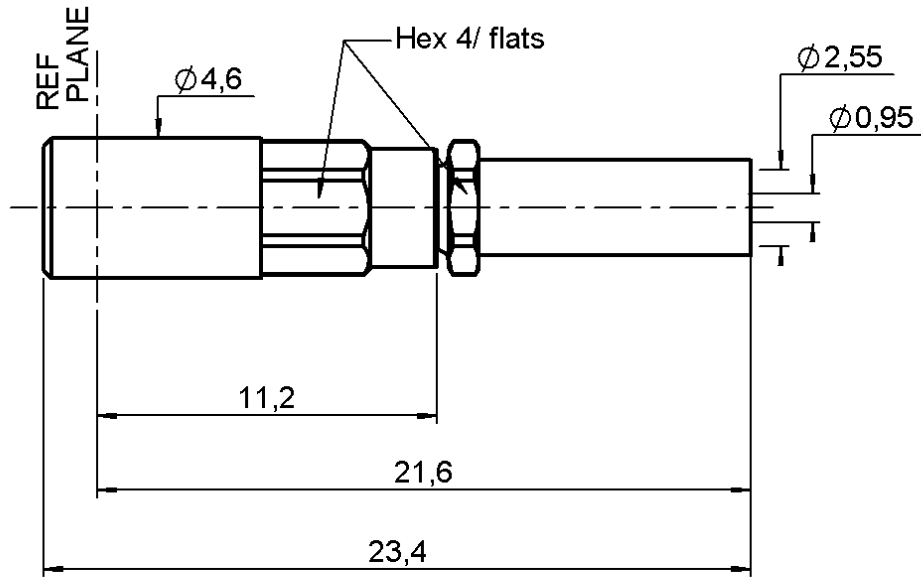


STRAIGHT PLUG CRIMP -
CABLE 2/50 S

R203.073.030

Series : **SSMB**



All dimensions are in mm.



| COMPONENTS | MATERIALS | PLATINGS (μm) |
|----------------|------------------|----------------------------|
| BODY | BRASS | GOLD 0.5 OVER NICKEL 2 |
| CENTER CONTACT | BERYLLIUM COPPER | GOLD 1.3 OVER NICKEL 2 |
| OUTER CONTACT | BERYLLIUM COPPER | GOLD 1.3 OVER NICKEL 2 |
| INSULATOR | PTFE | |
| GASKET | | |
| OTHERS PARTS | BRASS | GOLD 0.2 OVER NICKEL 2 |
| - | - | - |
| - | - | - |

Issue : 0402 A

In the effort to improve our products, we reserve the right to make changes judged to be necessary.



STRAIGHT PLUG CRIMP -

R203.073.030

CABLE 2/50 S

Series : **SSMB**

PACKAGING

| Standard | Unit | Other |
|------------|-------------------|-------------------|
| 100 | 'W' option | Contact us |

SPECIFICATION

ELECTRICAL CHARACTERISTICS

| | | |
|---------------------------------|----------------|-----------------------------|
| Impedance | | 50 Ω |
| Frequency | | 0-4 GHz |
| VSWR | 1.37* + | 0.000 x F(GHz) Maxi |
| Insertion loss | | 0.30 √F(GHz) dB Maxi |
| RF leakage | - (| 55 - F(GHz)) dB Maxi |
| Voltage rating | | 175 Veff Maxi |
| Dielectric withstanding voltage | | 500 Veff mini |
| Insulation resistance | | 1000 MΩ mini |

CABLE ASSEMBLY

| Stripping | a | b | c | d | e | f |
|-----------|------|------|------|------|------|------|
| mm | 3.50 | 4.00 | 12.0 | 0.00 | 8.50 | 0.00 |

Assembly instruction : **see page 3**

Recommended cable(s)

RG 196
RG 178
KX 21
RG 178 LC

Characteristics indicated on this data sheet are those that can be achieved with the highest performance cable. Intrinsic limitations of the cable may diminish the performance of the assembly

Cable retention

- pull off **50** N mini
- torque **NA** N.cm

MECHANICAL CHARACTERISTICS

| | | |
|----------------------------|-----------|-----------|
| Center contact retention | | |
| Axial force – Mating end | 8 | N mini |
| Axial force – Opposite end | 8 | N mini |
| Torque | NA | N.cm mini |

TOOLING

| Part Number | Description | Hexagon |
|--------------|---------------|---------|
| . | . | . |
| R282.211.000 | CRIMPING TOOL | |
| R282.235.003 | CRIMPING DIES | |
| R282.293.000 | CRIMPING TOOL | |

| | | |
|--------------------|--------------|------|
| Recommended torque | | |
| Mating | NA | N.cm |
| Panel nut | NA | N.cm |
| Clamp nut | 35.6 | N.cm |
| A/F clamp nut | 4.000 | mm |

| | | |
|-------------|--------------|-------------|
| Mating life | 500 | Cycles mini |
| Weight | 1.500 | g |

OTHERS CHARACTERISTICS

* At 3 GHz

ENVIRONMENTAL

| | | |
|-----------------------|-----------------|-----------|
| Operating temperature | -65/+155 | ° C |
| Hermetic seal | NA | Atm.cm3/s |
| Panel leakage | NA | |

Issue : **0402 A**

In the effort to improve our products, we reserve the right to make changes judged to be necessary.



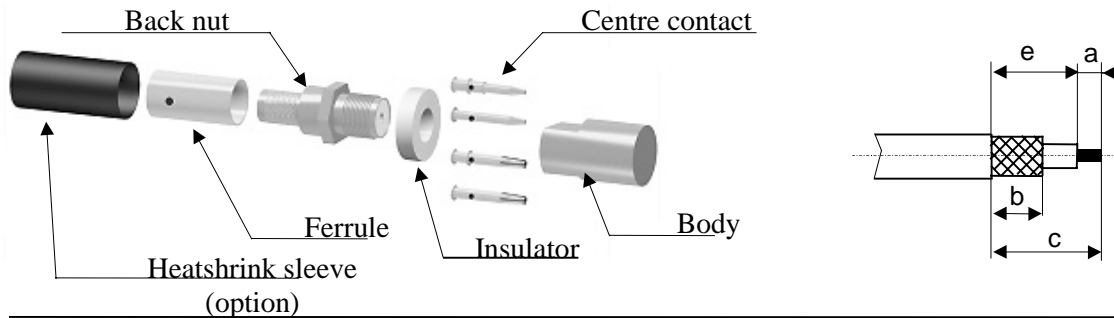
STRAIGHT PLUG CRIMP -

CABLE 2/50 S

R203.073.030

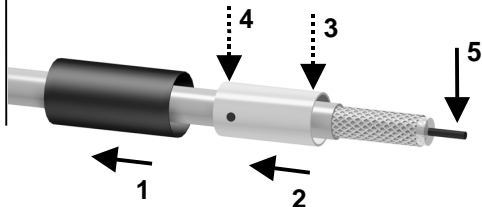
Series : SSMB

COMPONENTS



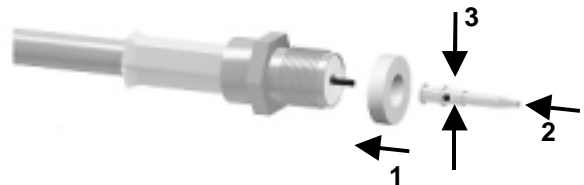
1

Slide the heatshrink sleeve onto the cable (Option). Slide the ferrule onto the cable. Position the ferrule's hole at the front if soldering. Position the ferrule's hole at the back if crimping. Strip the cable.



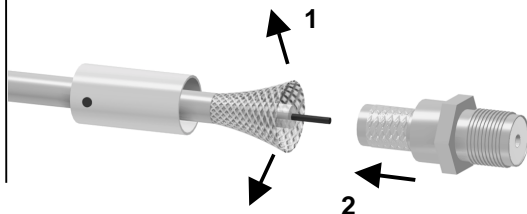
4

Slide the centre contact on until it bottoms against the insulator/back nut sub assembly. Solder or crimp the contact (see connector TDS).



2

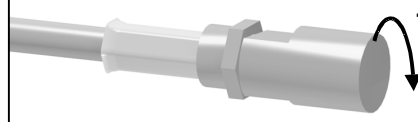
Fan the braid. Slide the cable into the back nut.



5

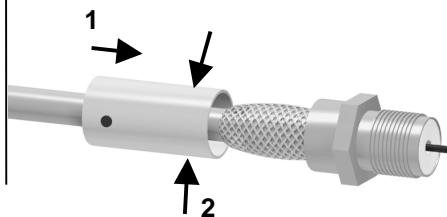
Mount center contact into remaining insulator and screw the back nut into the connector body with the adapted wrench.

Recommended coupling torque 170 N cm.



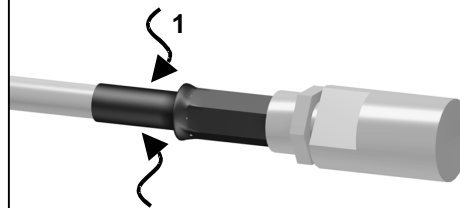
3

Slide the ferrule over the braid. Crimp the ferrule with crimping tool (see connector TDS).



6

Slide the sleeve over the ferrule and heatshrink it in place (option).



Issue : 0402 A

In the effort to improve our products, we reserve the right to make changes judged to be necessary.

